

# IFCSUM Forwarding and Consolidation Summary Message

## Introduction:

A message to be used for consolidation purposes from a party arranging forwarding and transport services to the party for which the transport of the consolidated cargo is destined. The message can be used to exchange information concerning the consolidated cargo between forwarders, carriers and agents enabling those parties to handle the consignments included in this consolidation. In addition it can be used for a collection of consignments originating from one shipper for forwarding and transport services.

## Notes:

This guideline is a joint development of Portuguese Customs Administration and the following Port Authorities working in partnership:

- Port Authority of Douro and Leixões (Administração dos Portos do Douro e Leixões, S.A. - APDL)
- Port Authority of Lisbon (Administração do Porto de Lisboa, S.A. - APL)
- Port Authority of Sines (Administração do Porto de Sines, S.A. - APS)

For the elaboration of this document, the legal requirements of the Portuguese Customs were carefully considered and the message aims "to feed" the Customs Summary Declaration System (SDS) and the Port Authorities Common Platform.

The goal is to provide the definition of the IFCSUM message to be used in the transmission of the vessel manifest by the shipping agents to both mentioned systems, using a single structured message to facilitate international trade.

The information related with companies, such as consignees, consignors, shippers, notifiers or others, and addresses, exception made for agents, is classified as sensitive and will be protected in accordance with article 15º Customs Code (CC), and sent to Customs Authorities.

Data to be routed from manifests through those mentioned systems will respect the original information.

This guideline was elaborated considering the following references:

- UN/EDIFACT D.97A IFCSUM
- UN/EDIFACT Data Element Codes D.00B
- ISO 6346 (2nd and 3rd editions) - Freight containers - Coding, identification and marking
- UN/ECE Recommendation 1 - United Nations Layout Key for Trade Documents (Doc. Ref. ECE/TRADE/137)
- UN/ECE Informative Annex to Recommendation 1 - United Nations Layout Key for Trade Documents (Doc. Ref. ECE/TRADE/270)
- UN/ECE Recommendation 7 - Numerical Representation of Dates, Time, and Periods of Time (Doc. Ref. TRADE/WP.4/INF.108)
- UN/ECE Recommendation 16 (3rd edition) - UN/LOCODE - Codes for Ports and Other Locations (Doc. Ref. ECE/TRADE/227) upgraded to 2003.2 version
- UN/ECE Recommendation 19 (2nd edition) - Codes for Modes of Transport (Doc. Ref. TRADE/CEFACT/2001/19)
- UN/ECE Recommendation 20 - Codes for Units of Measure Used in International Trade (Doc. Ref. TRADE/CEFACT/2001/20)
- UN/ECE Recommendation 21 - Codes for Types of Cargo, Packages and Packaging Materials Revision 2 (Doc. Ref. ECE/TRADE/211)
- UN/ECE Recommendation 21 - Codes for Types of Cargo, Packages and Packaging Materials Revision 4 to Annex V and Annex VI (Doc. Ref. TRADE/CEFACT/2002/)
- ITIGG: General Recommendations Version 2.1 March 2001 (Doc. Ref. D4/ITIGG/104/v.2.00)
- ITIGG: IFCSUM Principles and Rules for Implementation of Consignment Based Messages (Doc. Ref. D4/ITIGG/100/v2.9)
- Guia do Utilizador - Manifesto - Subset da Mensagem IFCSUM versão 3.4 Outubro de 2003
- NSTI/NCTS Declaração de Trânsito Informatizada - Documento Auxiliar ao Guia de Implementação das Mensagens EDI Versão 3, Anexo - Códigos a Utilizar, Portuguese Customs,

The fact that Data Element Codes are from a newer Edifact Directory (D.00B) is because many useful codes for this implementation were introduced. This way it minimizes the need of temporary local codes.

Note for Date/Time formats. The usual format for this information is CCYYMMDDHHMM. But as several shipping agents use application systems belonging to the carriers they represent, usually in different geographical locations, it is also possible the usage of the format CCYYMMDDHHMMZZZ. This way Date/Time information can include the

Note for References. Associated with a document many references may apply. Several reasons can be behind this: number of parties involved, legal restrictions, operational requirements, etc. Also, sometimes these references are not applied to the document on the same moment. So a specific date may be closely related with a certain reference. In this implementation the procedure of using the RFF segment to state as much as possible references and theirs respective date (when RFF and DTM are structured as a group) was used. This way it was tried to avoid the dispersion of references by several different segments, keep each reference associated with its date (when it applies), allow several references to coexist with the same degree of importance, avoid concatenations of several references of different nature and avoid the need to impose the partners series of numbers. By allowing such a degree of freedom, where different entities can issue a same reference number, references related to the several objects (documents, vessel calls, previous messages, etc) will be identified by a composite key made by the reference itself, its associated date and the issuer. Remark these pieces of information are to be sent in the appropriate segments.

Note to Consignments. The usage of segment group 19 is not limited to send information related to Bill of Ladings. Its usage was enlarged in order to include other transport documents. The list considered may change by the inclusion or removal of the documents' type.

Note about "Contramarca" activation and Required objects. Certain objects/information are marked as required after a certain event. Normally coincident with the mooring of the vessel. This event is one of the conditions needed in order to activate the Customs vessel process id ("Contramarca"). The other condition that must be satisfied is that the required objects/information must be sent. This does not mean that a message will be rejected if the required objects/information are missing. An adequate response will be given, but the message will be processed.

This guideline resulted from the balance of all opinions, remarks, restrictions and reference sources. Due to the complexity of the IFCSUM, its interpretations, and the specifics of each port involved, it is recognized that this guideline is the best common implementation. Port specifics will be noted through the guideline.

In the past, APL implemented an IFCSUM guideline that is presently being used in the Lisbon port community. For that reason certain objects (segment groups, segments, composites, elements and codes) will be kept in this guideline only to provide backward compatibility. These situations will be noted in the objects. It is strongly recommended not to adopt this objects in new implementations. They will not generate any error situation in order to allow current implementations to keep working. These objects will be marked as Optional.

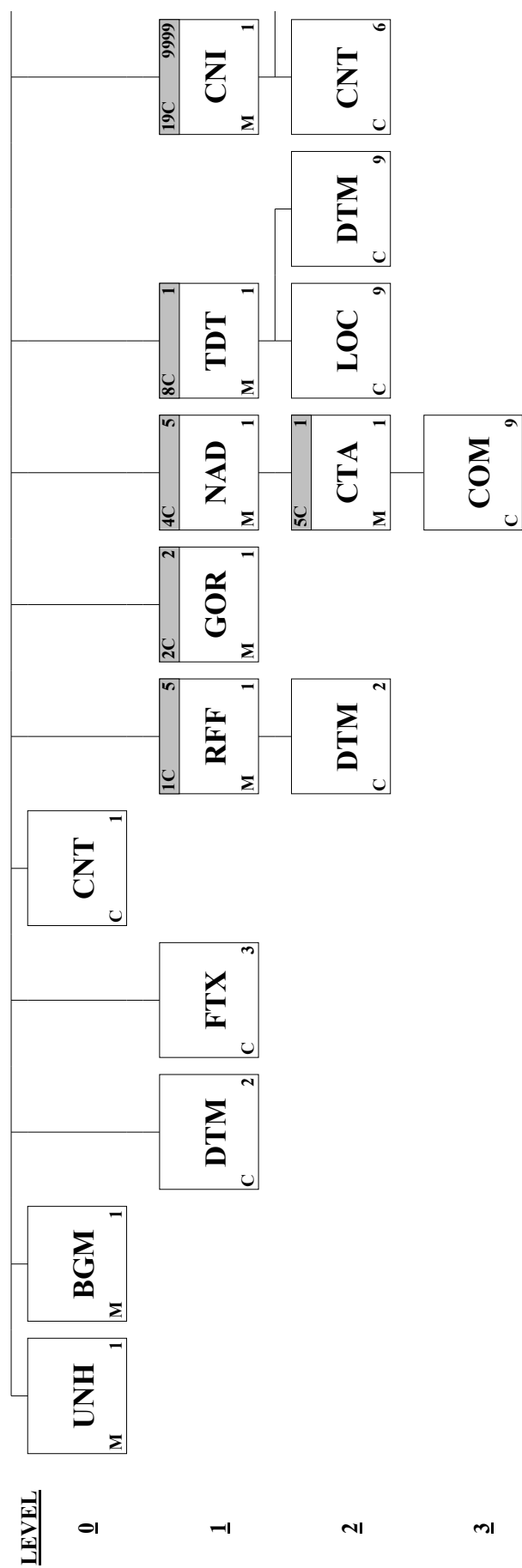
In the same line of thought, newer objects will be activated. These objects will also be marked as Optional. It is strongly recommended the usage of these objects by newer implementations and their adoption by current implementations as soon as possible. The exception is for objects that are activated due to Customs requirements. In these cases they have to be adopted. Some new objects also provide ways for the implementation of new processes that may add value to all partners in the port communities. This does not mean that these processes already exist, mainly because other actions outside this implementation have to be taken and other data sources have to be established. What this means is that an additional improvement to business activities in general are potentiated if the partners adopt the usage of these new objects.

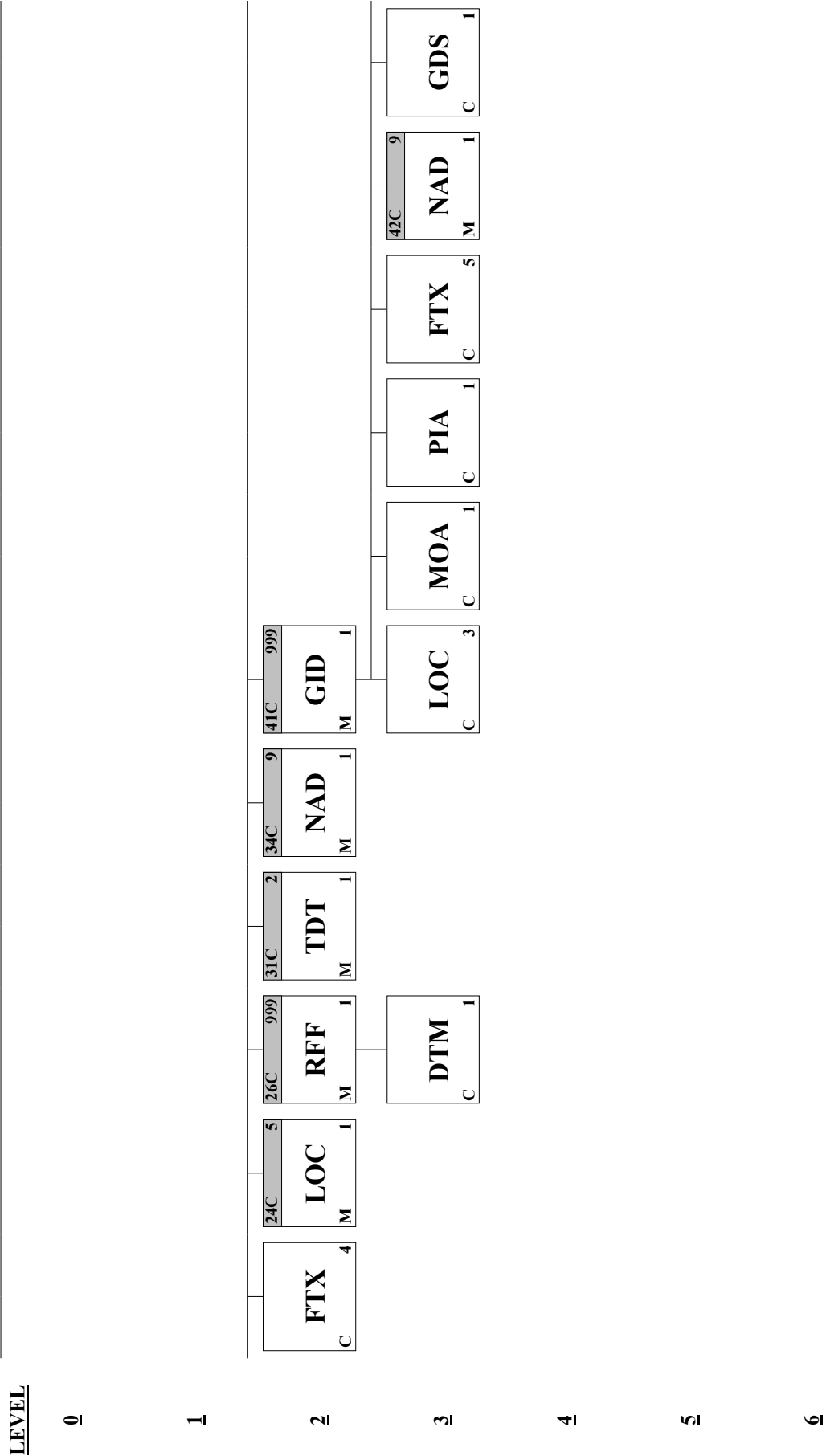
Usage Indicators in this document follow ITIGG Recommendation D4/G44.

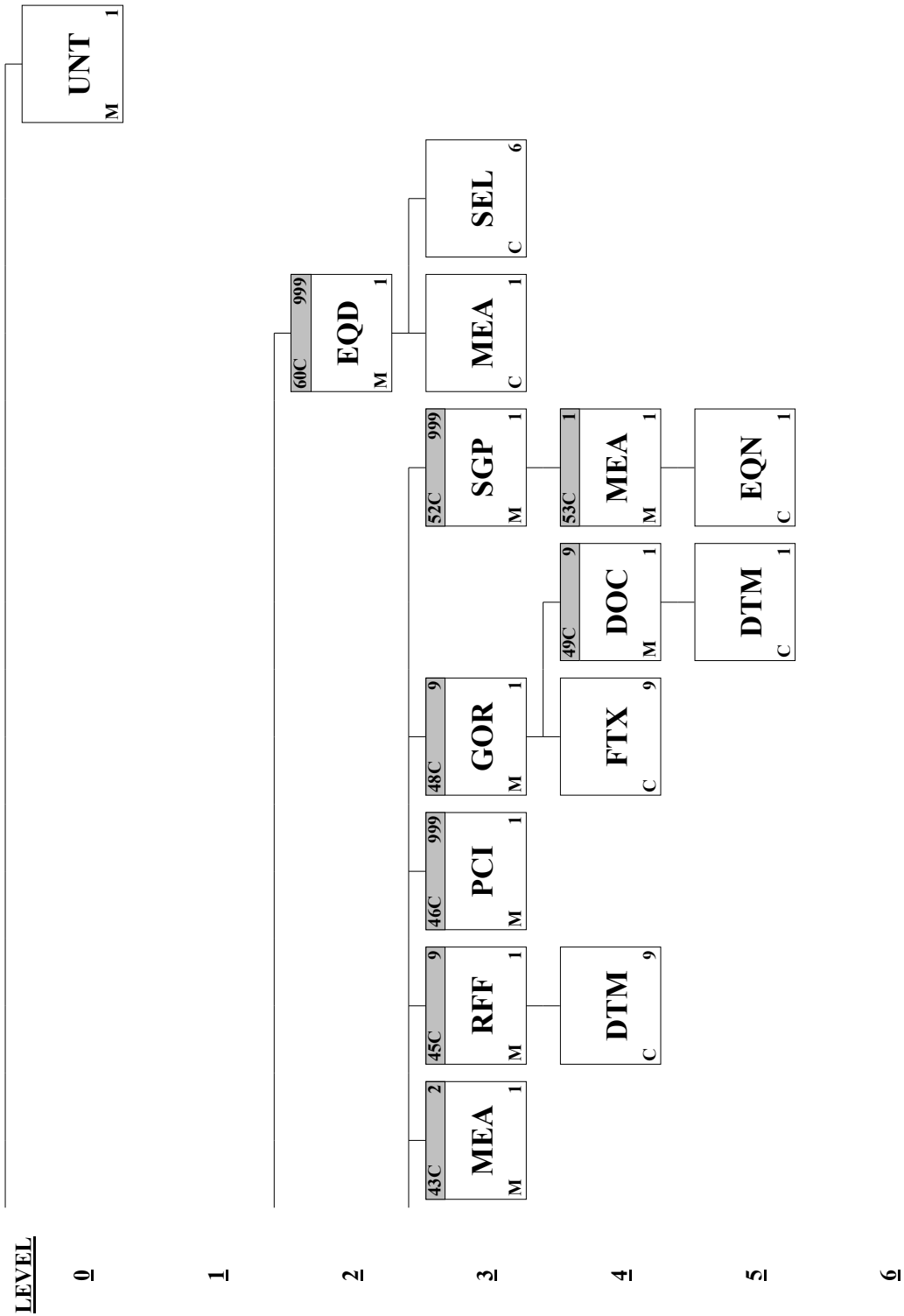
Page No.	Pos. No.	Seg. ID	Name	Base Guide	User Status	Max.Use	Group Repeat	Notes and Comments
7	0010	UNH	Message Header	M	M	1		
9	0020	BGM	Beginning of Message	M	M	1		
12	0030	DTM	Date/Time/Period	C	R	2		
13	0050	FTX	Free Text	C	O	3		
15	0060	CNT	Control Total	C	R	1		
	0070		Segment Group 1: RFF-DTM	C	R		5	
17	0080	RFF	Reference	M	M	1		
19	0090	DTM	Date/Time/Period	C	D	2		
	0100		Segment Group 2: GOR	C	R		2	
21	0110	GOR	Governmental Requirements	M	M	1		
	0190		Segment Group 4: NAD-SG5	C	R		5	
24	0200	NAD	Name and Address	M	M	1		
	0210		Segment Group 5: CTA-COM	C	O		1	
28	0220	CTA	Contact Information	M	M	1		
29	0230	COM	Communication Contact	C	R	9		
	0350		Segment Group 8: TDT-LOC-DTM	C	O		1	

# Common Platform - Manifest Message Format - Version 1.5e

31	0360	TDT	Details of Transport	M	M	1
33	0380	LOC	Place/Location Identification	C	O	9
35	0390	DTM	Date/Time/Period	C	O	9
	0860		Segment Group 19: CNI-CNT-FTX-SG24-SG26-SG31-SG34-SG41-SG60	C	D	9999
38	0870	CNI	Consignment Information	M	M	1
39	1010	CNT	Control Total	C	O	6
41	1050	FTX	Free Text	C	O	4
	1060		Segment Group 24: LOC	C	R	5
44	1070	LOC	Place/Location Identification	M	M	1
	1120		Segment Group 26: RFF-DTM	C	R	999
47	1130	RFF	Reference	M	M	1
50	1140	DTM	Date/Time/Period	C	R	1
	1400		Segment Group 31: TDT	C	R	2
52	1410	TDT	Details of Transport	M	M	1
	1500		Segment Group 34: NAD	C	R	9
56	1510	NAD	Name and Address	M	M	1
	1820		Segment Group 41: GID-LOC-MOA-PIA-FTX-SG42-GDS-SG43-SG45-SG46-SG48-SG52	C	D	999
60	1830	GID	Goods Item Details	M	M	1
62	1880	LOC	Place/Location Identification	C	R	3
64	1890	MOA	Monetary Amount	C	O	1
65	1900	PIA	Additional Product Id	C	R	1
67	1920	FTX	Free Text	C	R	5
	1930		Segment Group 42: NAD	C	R	9
70	1940	NAD	Name and Address	M	M	1
74	1960	GDS	Nature of Cargo	C	R	1
	1970		Segment Group 43: MEA	C	D	2
76	1980	MEA	Measurements	M	M	1
	2030		Segment Group 45: RFF-DTM	C	O	9
79	2040	RFF	Reference	M	M	1
82	2050	DTM	Date/Time/Period	C	R	9
	2060		Segment Group 46: PCI	C	D	999
84	2070	PCI	Package Identification	M	M	1
	2140		Segment Group 48: GOR-FTX-SG49	C	O	9
86	2150	GOR	Governmental Requirements	M	M	1
89	2190	FTX	Free Text	C	D	9
	2200		Segment Group 49: DOC-DTM	C	O	9
91	2210	DOC	Document/Message Details	M	M	1
97	2220	DTM	Date/Time/Period	C	O	1
	2280		Segment Group 52: SGP-SG53	C	D	999
99	2290	SGP	Split Goods Placement	M	M	1
	2310		Segment Group 53: MEA-EQN	C	D	1
101	2320	MEA	Measurements	M	M	1
103	2330	EQN	Number of Units	C	O	1
	2570		Segment Group 60: EQD-MEA-SEL	C	D	999
105	2580	EQD	Equipment Details	M	M	1
107	2610	MEA	Measurements	C	R	1
108	2630	SEL	Seal Number	C	D	6
109	2810	UNT	Message Trailer	M	M	1







**Segment:** **UNH** Message Header  
**Position:** 0010  
**Group:**  
**Level:** 0  
**Usage:** Mandatory  
**Max Use:** 1  
**Purpose:** A service segment starting and uniquely identifying a message. The message type code for the Forwarding and consolidation summary message is IFCSUM.  
 Note: Forwarding and consolidation summary messages conforming to this document must contain the following data in segment UNH, composite S009:  
 Data element 0065 IFCSUM 0052 D 0054 97A  
 0051 UN

**Dependency Notes:****Semantic Notes:****Comments:****Notes:**

Example: Message envelope number "1357924680", type "IFCSUM", UN/Edifact directory "D97A"

UNH+1357924680+IFCSUM:D:97A:UN'

**Data Element Summary**

<b>Data Element</b>	<b>Component Element</b>	<b>Name</b>	<b>Base Attributes</b>	<b>User Attributes</b>
<b>0062</b>		<b>MESSAGE REFERENCE NUMBER</b> Unique message reference assigned by the sender. Number assigned by the transmitter. It will not be used for business purposes. It is suggested to follow the format "CCCCCAASSSS" where - CCCCCC user code - AA year (2-digit) - SSSS sequential number <i>For backward compatibility, this element will be processed for messages that are received from users of the existent Port of Lisbon implementation.</i>	<b>M an..14</b>	<b>M</b>
<b>S009</b>		<i>The contents of this element will be subject to the rules and interpretation applicable to the BGM:1004.</i> <b>MESSAGE IDENTIFIER</b> Identification of the type, version etc. of the message being interchanged.	<b>M</b>	<b>M</b>
	<b>0065</b>	<b>Message type identifier</b> Code identifying a type of message and assigned by its controlling agency. IFCSUM Forwarding and consolidation summary message A code to identify the forwarding and consolidation summary message.	<b>M an..6</b>	<b>M</b>
	<b>0052</b>	<b>Message type version number</b> Version number of a message type. D Draft version/UN/EDIFACT Directory Message approved and issued as a draft message (Valid for directories published after March 1993 and prior to March 1997). Message approved as a standard message (Valid for directories published after March 1997).	<b>M an..3</b>	<b>M</b>
	<b>0054</b>	<b>Message type release number</b> Release number within the current message type version number (0052). 97A Release 1997 - A Message approved and issued in the first 1997 release of the UNTDID (United Nations Trade Data Interchange Directory).	<b>M an..3</b>	<b>M</b>
	<b>0051</b>	<b>Controlling agency</b> Code identifying the agency controlling the specification, maintenance and publication of the message type. UN UNECE/TRADE/WP.4 United Nations Economic UN Economic Commission for Europe (UNECE), Committee on the development of trade (TRADE), Working Party on facilitation of international trade procedures (WP.4).	<b>M an..2</b>	<b>M</b>
	<b>0057</b>	<b>Association assigned code</b>	<b>C an..6</b>	<b>O</b>

# Common Platform - Manifest Message Format - Version 1.5e

Code, assigned by the association responsible for the design and maintenance of the message type concerned, which further identifies the message.

<b>0068</b>	<b>COMMON ACCESS REFERENCE</b>	<b>C</b>	<b>an..35</b>	<b>X</b>
<b>S010</b>	<b>STATUS OF THE TRANSFER</b>	<b>C</b>		<b>X</b>

Statement that the message is one in a sequence of transfers relating to the same topic.

<b>0070</b>	<b>Sequence message transfer number</b>	<b>M</b>	<b>n..2</b>	<b>X</b>
-------------	---	----------	-------------	----------

Number assigned by the sender indicating that the message is an addition or change of a previously sent message relating to the same topic.

<b>0073</b>	<b>First/last sequence message transfer indication</b>	<b>C</b>	<b>a1</b>	<b>X</b>
-------------	--	----------	-----------	----------

Indication used for the first and last message in a sequence of the same type of message relating to the same topic.



**Segment:** **BGM** Beginning of Message  
**Position:** 0020  
**Group:**  
**Level:** 0  
**Usage:** Mandatory  
**Max Use:** 1  
**Purpose:** A segment to indicate the beginning of the message and to transmit identifying number (e.g. Master B/L, Master AWB etc.), type, date and the function of the message.

**Dependency Notes:****Semantic Notes:****Comments:****Notes:**

Example: Manifest "785"; message number: "23451999"; original: "9"

BGM+785+23451999+9'

**Data Element Summary**

<u>Data Element</u>	<u>Component Element</u>	<u>Name</u>	<u>Base Attributes</u>	<u>User Attributes</u>
C106	C002	DOCUMENT/MESSAGE NAME	C	R
		Identification of a type of document/message by code or name. Code preferred.		
	1001	Document/message name, coded	C an..3	R
		Document/message identifier expressed in code.		
		785 Cargo manifest		
		Listing of goods comprising the cargo carried in a means of transport or in a transport-unit. The cargo manifest gives the commercial particulars of the goods, such as transport document numbers, consignors, consignees, shipping marks, number and kind of packages and descriptions and quantities of the goods.		
		833 Cargo declaration (departure)		
		Generic term, sometimes referred to as Freight declaration, applied to the documents providing the particulars required by the Customs concerning the cargo (freight) carried by commercial means of transport (CCC).		
		Only provided for backward compatibility. It will be treated like code '785'.		
		Please, see notes of segment GOR in group 2.		
	1131	Code list qualifier	C an..3	X
	3055	Code list responsible agency, coded	C an..3	X
	1000	Document/message name	C an..35	X
		DOCUMENT/MESSAGE IDENTIFICATION	C	R
1225		Identification of a document/message by its number and eventually its version or revision.		
	1004	Document/message number	C an..35	R
		Reference number assigned to the document/message by the issuer.		
		Send the identification of the message.		
		For backward compatibility, this element can be used by the users of the Port of Lisbon current implementation to send the document (manifest) number.		
		The differences between the Port of Lisbon project and this implementation are: - the document number must be sent in SG1:RFF:1154, having SG1:RFF:1153 with code AFB.		
	1056	Version	C an..9	X
	1060	Revision number	C an..6	X
		MESSAGE FUNCTION, CODED	C an..3	R
		Code indicating the function of the message.		
	1	Cancellation		
		Message cancelling a previous transmission for a given transaction.		
		Cancel an already sent manifest. If the customs have already activated the customs process, the shipping agent has to ask customs permission to do it.		
		A manifest cannot be cancelled in the following situations: a) at least one of its transport documents is in the state of "closed" (fechado) for the Port Authority, since it originates invoices and		

2

statistical data;

b) at least one transport equipment or one goods item referred in one of its transport documents was subject to a physical movement.

This applies to whole document, so information in group 19 will not be processed.

Addition

Message containing items (e.g. line items, goods items, Customs items, equipment items) to be added to a previously sent message. Add consignment document to an already sent manifest. If the manifest is a final manifest then this addition is considered customs additional cargo, except if the added documents resulted from an unfolding (desdobramento) process. For this particular case see notes in next FTX segment.

If the manifest was already subject to an invoice process by the Port Authority, this function will generate "work to do" since the following documents might be missing:

- a) discharge/loading report;
- b) invoice for the added transport document.

In group 19 send only the information related to the consignment to be added.

3

Deletion

Message containing items (e.g. line items, goods items, Customs items, equipment items) to be deleted from a previously sent message.

Remove consignment document. If the customs have already activated the customs process or this specific consignment document is already treated by customs, the shipping agent has to ask customs permission to do it.

The removal operation cannot be executed in the following situations:

- a) at least one of the transport documents to be removed is in the state of "closed" (fechado) for the Port Authority since it originates invoices and statistical data;
- b) at least one transport equipment or one goods, item referred in one of the transport documents to be removed was subject to a physical movement.

In group 19 send only the information related to the consignment to be deleted.

4

Change

Message containing items (e.g. line items, goods items, Customs items, equipment items) to be changed in a previously sent message. Change a consignment document. If customs had already activated the customs process, or this specific consignment document is already treated by customs, the shipping agent has to ask customs permission to do it.

The change operation cannot be executed in the following situations:

- a) at least one of the transport documents to be changed is in the state of "closed" (fechado) for the Port Authority since it originates invoices and statistical data;
- b) at least one transport equipment or one goods, item referred in one of the transport documents to be changed was subject to a physical movement.

In group 19 send only the information related to the consignment to be changed.

5

Replace

Message replacing a previous message.

This function replaces the manifest as if it were two messages: delete and create a new one. If the customs have already activated the customs process, the shipping agent has to ask customs permission to do it.

		The substitution operation cannot be executed in the following situations: a) at least one of the transport documents is in the state of "closed" (fechado) for the Port Authority since it originates invoices and statistical data; b) at least one transport equipment or one goods, item referred in one of the transport documents was subject to a physical movement.
9	Original	Initial transmission related to a given transaction.
		Only can be used if it's the first message for this specific document (manifest).
22	Final transmission	Final message in a related series of messages together making up a commercial, administrative or transport transaction. This code declares the document as closed. This is, no more transport documents will be included in the manifest. Only after the good integration of this message in the Customs system, certain Customs procedures will be activated.
		It is the date of this message that will be considered as the date of delivery of the document.
		After a message with this function is sent, the usage of all other functions will be processed like "rectification" according to Customs' definition. Consequently they will be subject to approval or refusal from Customs.
		This applies to whole document, so information in group 19 will not be processed.
33	Change in heading section	Message changing the referenced message heading section.
		This function allows the correction/change of information at document header level. Information in group 19 will not be processed.
46	Provisional	Message content is provisional. <i>Only provided for backward compatibility. It will be treated like code '9'.</i>
47	Definitive	Message content is definitive. <i>Only provided for backward compatibility. It will be treated like code '9'.</i>
4343	RESPONSE TYPE, CODED	C an..3 X

**Segment:** **DTM** **Date/Time/Period**  
**Position:** 0030  
**Group:**  
**Level:** 1  
**Usage:** Conditional (Required)  
**Max Use:** 2  
**Purpose:** A segment to specify date/time of the document/message.  
**Dependency Notes:**  
**Semantic Notes:**  
**Comments:**  
**Notes:**

This segment is used twice.

The first usage is to give the date/time at which the sender creates the message, ready to be sent in the communication channel. In this case DE:2005 will be '137'.

The second usage is to give at what time the message was placed in the mailbox by the sender when the receiver is a port authority. This is, the time at which it was effectively available to the receiver from the sender by being placed in the communications channel. This second usage applies only to the relation between the port authorities and Customs. In this case DE:2005 will be '243'.

Example: Date/time the message was issued: "2003/10/09 - 14:30"

DTM+137:200310091430:203'

Example: Date/time the message was issued: "2003/10/08 - 15:25 UTC+3". Attention that in this case the defined escape character must be used in the date/time format, if the time zone is positive in relation to GMT. If the escape character is '?' then

DTM+137:200310081525?+03:303'

#### Data Element Summary

<u>Data Element</u>	<u>Component Element</u>	<u>Name</u>	<u>Base Attributes</u>	<u>User Attributes</u>
<b>C507</b>		<b>DATE/TIME/PERIOD</b>	<b>M</b>	<b>M</b>
		Date and/or time, or period relevant to the specified date/time/period type.		
	<b>2005</b>	<b>Date/time/period qualifier</b>	<b>M an..3</b>	<b>M</b>
		Code giving specific meaning to a date, time or period.		
		137 Document/message date/time		
		(2006) Date/time when a document/message is issued. This may include authentication.		
		243 Transmission date/time of document		
	<b>2380</b>	<b>Date/time/period</b>	<b>C an..35</b>	<b>R</b>
		The value of a date, a date and time, a time or of a period in a specified representation.		
		According with UN/ECE Recommendation N°7.		
	<b>2379</b>	<b>Date/time/period format qualifier</b>	<b>C an..3</b>	<b>R</b>
		Specification of the representation of a date, a date and time or of a period.		
		203 CCYYMMDDHHMM		
		Calendar date including time with minutes: C=Century; Y=Year; M=Month; D=Day; H=Hour; M=Minutes.		
		303 CCYYMMDDHHMMZZZ		
		See 203 plus Z=Time zone.		

**Segment:** **FTX** Free Text  
**Position:** 0050  
**Group:**  
**Level:** 1  
**Usage:** Conditional (Optional)  
**Max Use:** 3  
**Purpose:** A segment to give information and/or processable instructions in addition to that in other segments.

**Dependency Notes:****Semantic Notes:****Comments:****Notes:**

The use of this segment allows to have a 350-character space for purpose of free information concerning Observation related to the Manifest as a whole. If the manifest is being changed (message function is 2,3 or 4) then the reason must be given in this segment. In this case use code 'AAI' in DE:4451.

If the message is providing documents of transport that resulted from an unfolding process (desdobramento), then use code 'ABG' in DE:4451 with the string DESDOBRAR/UNFOLD in the first element 4440 of C108.

Example: "Goods with no special conditionings"

FTX+AAI+++GOODS WITH NO SPECIAL CONDITIONINGS'

Example: "The Transport documents in this message resulted from an unfolding process"

FTX+ABG+++DESDOBRAR/UNFOLD'

*In the APL implementation guideline, this segment was also used by the vessel agent to identify the other agents making part of the pool and that were carrying cargo in the vessel. This function will be performed in the "Processo de Meio de Transport" application system. So, information related with this function will be ignored.*

**Data Element Summary**

<u>Data Element</u>	<u>Component Element</u>	<u>Name</u>	<u>Base Attributes</u>	<u>User Attributes</u>
4451		<b>TEXT SUBJECT QUALIFIER</b> Code specifying subject of a free text. AAI General information ABG Instructions or information about partial shipment(s) Instructions or information about partial shipment(s). ZCN Agent to send the manifest <i>Only provided for backward compatibility. Information in the segment will be ignored.</i>	M an..3	M
4453		<b>TEXT FUNCTION, CODED</b>	C an..3	X
C107		<b>TEXT REFERENCE</b> Coded reference to a standard text and its source.	C	X
	4441	<b>Free text identification</b> Free text in coded form.	M an..17	X
	1131	<b>Code list qualifier</b> Identification of a code list.	C an..3	X
	3055	<b>Code list responsible agency, coded</b> Code identifying the agency responsible for a code list.	C an..3	X
C108		<b>TEXT LITERAL</b> Free text; one to five lines.	C	O
	4440	<b>Free text</b> Free text field available to the message sender for information. If code in DE:4451 is 'ABG' then place the following text: DESDOBRAR/UNFOLD in this element.	M an..70	M
	4440	<b>Free text</b> Free text field available to the message sender for information.	C an..70	O
	4440	<b>Free text</b>	C an..70	O

Common Platform - Manifest Message Format - Version 1.5e

	Free text field available to the message sender for information.			
4440	Free text	C	an..70	O
	Free text field available to the message sender for information.			
4440	Free text	C	an..70	O
	Free text field available to the message sender for information.			
3453	LANGUAGE, CODED	C	an..3	X

**Segment:** **CNT** **Control Total**  
**Position:** 0060  
**Group:**  
**Level:** 0  
**Usage:** Conditional (Required)  
**Max Use:** 1  
**Purpose:** A segment to specify totals of the consolidation (e.g. total number of equipment, total number of consignments, total gross weight and/or dimensions of the whole consolidation etc.).

**Dependency Notes:****Semantic Notes:****Comments:****Notes:**

To inform the number of consignments in the message.

Example: 123 consignments

CNT+10:123'

*For backward compatibility, more than one occurrence is accepted, but information will be ignored.***Data Element Summary**

<b>Data Element</b>	<b>Component Element</b>	<b>Name</b>	<b>Base Attributes</b>	<b>User Attributes</b>
<b>C270</b>		<b>CONTROL</b>	<b>M</b>	<b>M</b>
		Control total for checking integrity of a message or part of a message.		
	<b>6069</b>	<b>Control qualifier</b>	<b>M an..3</b>	<b>M</b>
		Determines the source data elements in the message which forms the basis for 6066 Control value.		
		10 Total number of consignments		
		The total number of consignments.		
	<b>6066</b>	<b>Control value</b>	<b>M n..18</b>	<b>M</b>
		Value obtained from summing the values specified by the Control Qualifier throughout the message (Hash total).		
	<b>6411</b>	<b>Measure unit qualifier</b>	<b>C an..3</b>	<b>X</b>

**Group:** **RFF** Segment Group 1: Reference**Position:** 0070**Group:****Level:** 1**Usage:** Conditional (Required)**Max Use:** 5**Purpose:** A group of segments containing references and constants which apply to the entire message.**Notes:** This group is used to send the five possible references allowed at header level: the Port Authority vessel call Id, the Customs vessel call Id (known as "Contramarca"), the manifest Id given by the carrier/agent, a reference to a previous message and the manifest Id given by the Port Authority (this last reference is only to be used in the communication between the Port Authority and Customs).

The group must be sent the number of times needed to send all the references the carrier/agent is aware at the moment it sends the document. At least the manifest Id (RFF:C506:1153='AFB') and Port Authority vessel call Id (RFF:C506:1153='ATZ') must be sent by the shipping agent or its representative. This means that the group must occur twice, at least. In the case of the communication between the Port Authority and Customs, a third occurrence must exist to send the manifest Id given by the Port Authority (RFF:1153='ACD').

The Customs vessel call Id may be sent when known or was activated. In this case there is no need to send information in DTM segment. In case the shipping agent hasn't provided the Customs vessel call Id, the Port Authority must include it in the message in case this Id has been provided for the vessel call in question.

The reference to a previous message (RFF:1153 is ACW) is only sent when the message function, stated in BGM:1225, is not '9' (or '46' or '47' for compatibility reasons) or is '2' but resulting from an unfolding (desdoblamiento) process. The goal behind this usage is to provide a way to keep the correct chronological sequence of different messages related with the same document synchronized with the sender. This usage was based on ITIGG Recommendation D4/G4.

When qualifiers 'ACW', 'AFB' or 'ACD' are used, then the segment DTM in this group must be sent.

For qualifier 'ACW' in segment RFF, the date in segment DTM in this group must be the one that was present in segment DTM at top level of the previous message.

For qualifier 'AFB' in segment RFF, the date in segment DTM in this group corresponds to the date of the document. In other words, the manifest date. It is admissible this date to be the same as the date in segment DTM at the top level, but it cannot be more recent.

The reference number by which the issuer knows the document (manifest) and the respective date, must be unchangeable and unique for each issuer, independently of the number of messages associated with the document (manifest).

## Segment Summary

	<b>Pos.</b>	<b>Seg.</b>		<b>Req.</b>	<b>Max.</b>	<b>Group:</b>
	<b>No.</b>	<b>ID</b>	<b>Name</b>	<b>Des.</b>	<b>Use</b>	<b>Repeat</b>
M	0080	RFF	Reference	M	1	
D	0090	DTM	Date/Time/Period	C	2	



<b>Segment:</b>	<b>RFF Reference</b>
<b>Position:</b>	0080 (Trigger Segment)
<b>Group:</b>	SG1
<b>Level:</b>	1
<b>Usage:</b>	Mandatory
<b>Max Use:</b>	1
<b>Purpose:</b>	A segment to express a reference which applies to the entire message.
<b>Dependency Notes:</b>	
<b>Semantic Notes:</b>	
<b>Comments:</b>	
<b>Notes:</b>	

When the reference is Customs vessel process id (RFF:C506:1153='AFM'), then the reference value in DE:1154 must have the format defined by Customs. The current format is

- UN/Locode: 5 characters
- customs office code: 3 digits
- mode of transport code (UN/CEFACT Trade Facilitation Recommendation 19 - Codes for Modes of Transport): 1 digit
- year: 4 digits
- sequential number: 6 digits left padded with zeros

Please note that this format is subject to changes in the future.

When the reference is the Port Authority vessel call Id (RFF:C506:1153='ATZ'), then in each the following Ports, the suffixes apply to the reference:

- Port of Leixões: ESC
- Port of Lisbon: LIS
- Port of Sines: SIN

Example: Manifest Id given by the carrier/agent: NBLISD001

RFF+AFB:NBLISD001'

Example: Lisbon's vessel call: LIS200300159

RFF+ATZ:LIS200300159'

Example: Customs vessel process id (Contramarca) PTLIS07512004000107

RFF+AFM:PTLIS07512004000107'

#### Data Element Summary

<u>Data Element</u>	<u>Component Element</u>	<u>Name</u>	<u>Base Attributes</u>	<u>User Attributes</u>
<b>C506</b>		<b>REFERENCE</b>	<b>M</b>	<b>M</b>
		Identification of a reference.		
	<b>1153</b>	<b>Reference qualifier</b>	<b>M an..3</b>	<b>M</b>
		Code giving specific meaning to a reference segment or a reference number.		
		ABO Originator's reference		
		<i>Only provided for backward compatibility. It will be treated like code 'AFB'.</i>		
		ACD Additional reference number		
		Reference number provided in addition to another given reference.		
		ACW Reference number to previous message		
		Reference number assigned to the message which was previously issued (e.g. in the case of a cancellation, the primary reference of the message to be cancelled will be quoted in this element).		
		<i>This id is what appeared in BGM:C106:1004 of a previous message.</i>		
		AFB Cargo manifest number		
		Reference number assigned to a cargo manifest, see: 1001 = 785.		

Common Platform - Manifest Message Format - Version 1.5e

				The reference by which the carrier/agent knows this manifest.
	AFM			Secondary Customs reference
				The reference is the Customs vessel call Id (known as "Contramarca").
	ATZ			Ship's stay reference number
				Reference number assigned by a port authority to the stay of a vessel in the port.
				The reference is the Port Authority vessel call Id. This number is provided by the Port Authority Information System.
	VON			Voyage number
				[8228] Reference number assigned by the carrier or his agent to the voyage of the vessel.
				<i>Only provided for backward compatibility. It will be treated like code 'ATZ'.</i>
1154	Reference number	C	an..35	R
	Identification number the nature and function of which can be qualified by an entry in data element 1153 Reference qualifier.			
	If 1153 is 'ATZ', the reference will be checked against the information about the agent associated with the vessel call provided to the Port Authority (according with the procedures of "Processo Meio Transporte").			
1156	Line number	C	an..6	X
4000	Reference version number	C	an..35	X

**Segment:** **DTM** Date/Time/Period  
**Position:** 0090  
**Group:** SG1  
**Level:** 2  
**Usage:** Conditional (Dependent)  
**Max Use:** 2  
**Purpose:** A segment to indicate date and time relating to the reference.

**Dependency Notes:****Semantic Notes:****Comments:****Notes:**

The complete meaning of this date depends of the type of reference in the previous RFF segment, stated in RFF:C506:1153 data element. Recall that this segment must be sent when then RFF:1153 is in {ACW, AFB}.

Example: Date/time of the reference: "2003/10/08 - 10:15"

DTM+171:200310081015:203'

Example: Date/time of the reference: "2003/10/08 - 15:25 UTC+3". Attention that in this case the defined escape character must be used in the date/time format, if the time zone is positive in relation to GMT. If the escape character is '?' then

DTM+171:200310081525?+03:303'

**Data Element Summary**

<u>Data Element</u>	<u>Component Element</u>	<u>Name</u>	<u>Base Attributes</u>	<u>User Attributes</u>
<b>C507</b>		<b>DATE/TIME/PERIOD</b>	<b>M</b>	<b>M</b>
		Date and/or time, or period relevant to the specified date/time/period type.		
	<b>2005</b>	<b>Date/time/period qualifier</b>	<b>M an..3</b>	<b>M</b>
		Code giving specific meaning to a date, time or period.		
		171 Reference date/time		
		Date/time on which the reference was issued.		
	<b>2380</b>	<b>Date/time/period</b>	<b>C an..35</b>	<b>R</b>
		The value of a date, a date and time, a time or of a period in a specified representation.		
		According with UN/ECE Recommendation N°7.		
	<b>2379</b>	<b>Date/time/period format qualifier</b>	<b>C an..3</b>	<b>R</b>
		Specification of the representation of a date, a date and time or of a period.		
		203 CCYYMMDDHHMM		
		Calendar date including time with minutes: C=Century; Y=Year; M=Month; D=Day; H=Hour; M=Minutes.		
		303 CCYYMMDDHHMMZZZ		
		See 203 plus Z=Time zone.		

**Group:** **GOR** Segment Group 2: Governmental Requirements  
**Position:** 0100  
**Group:**  
**Level:** 1  
**Usage:** Conditional (Required)  
**Max Use:** 2  
**Purpose:** A group of segments to give information about the current customs procedure under which the transport is moving or to indicate applicable governmental procedures related to import, export and transit of the voyage/flight or consolidation.  
**Notes:** This group is to state the type of manifest. Its usage replaces the need to use different codes in BGM:1001 (see backward compatibility comments in the GOR segment).  
 The second usage is applied only to backward compatibility.

## Segment Summary

	<b>Pos. No.</b>	<b>Seg. ID</b>	<b>Name</b>	<b>Req. Des.</b>	<b>Max. Use</b>	<b>Group: Repeat</b>
M	0110	GOR	Governmental Requirements	M	1	

**Segment:** **GOR** Governmental Requirements  
**Position:** 0110 (Trigger Segment)  
**Group:** SG2  
**Level:** 1  
**Usage:** Mandatory  
**Max Use:** 1  
**Purpose:** A segment to give information about the current customs procedure under which the transport is moving or to indicate applicable governmental procedures to import, export and transit of the voyage/flight or consolidation.

**Dependency Notes:****Semantic Notes:****Comments:****Notes:**

Relating to the first function, the following notes shall be considered.

If the document is a Discharge Manifest, then BGM:1001='785' and GOR:8323='2' (see notes for backward compatibility).

If the document is a Loading Manifest, then BGM:1001='785' and GOR:8323='1' (see notes of backward compatibility).

If the document is related to cargo In Transit, then BGM:1004='785' and GOR:8323='3' (see notes of backward compatibility).

Note, the transit manifest can be delivered to Customs on paper while EU legislation does not oblige to an electronic transmission.

Example: Export manifest

GOR+1+5'

*In the APL implementation guideline, the distinction between Loading and Discharge documents where given by the usage of code '833' in BGM:1001.*

*For backward compatibility the process will be supported with the partners that currently use the APL system. The following equivalencies apply:*

*- APL implementation BGM:1001='833' and GOR:8323='1' is equivalent to BGM:1001='785' and GOR:8323='1' in the new implementation.*

*- APL implementation BGM:1001='785' and GOR:8323='2' is equivalent to BGM:1001='785' and GOR:8323='2' in the new implementation.*

**Data Element Summary**

<u>Data Element</u>	<u>Component Element</u>	<u>Name</u>	<u>Base Attributes</u>	<u>User Attributes</u>
8323		<b>TRANSPORT MOVEMENT, CODED</b>	<b>C an..3</b>	<b>R</b>
		Code indicating the movement of goods (e.g. import, export, transit).		
	1	Export		
		Note that this term is understood in the wider context of outbound of goods and not under the strict customs definition.		
	2	Import		
		Note that this term is understood in the wider context of inbound of goods and not under the strict customs definition.		
	3	Transit		
		Note that this term is understood in the wider context of goods that remain on board the vessel.		
	ZS0	Simplified Transit Procedure not admitted		
		<i>Only provided for backward compatibility. Information in the segment will be ignored.</i>		
	ZS1	Simplified Transit Procedure Level 1 article 447, EC regulation no. 2454/93 of the Commission		
		<i>Only provided for backward compatibility. Information in the segment will be ignored.</i>		
	ZS2	Simplified Transit Procedure Level 2 article 448, EC regulation no. 2454/93 of the Commission		
		<i>Only provided for backward compatibility. Information in the segment will be ignored.</i>		
<b>C232</b>		<b>GOVERNMENT ACTION</b>	<b>C</b>	<b>R</b>
		Code indicating a type of government action.		

	<b>9415</b>	<b>Government agency, coded</b>	<b>C</b>	<b>an..3</b>	<b>R</b>
		To indicate government agencies that are involved.			
	5	Customs			
		Customs authorities.			
<b>C232</b>	<b>9411</b>	<b>Government involvement, coded</b>	<b>C</b>	<b>an..3</b>	<b>X</b>
	<b>9417</b>	<b>Government action, coded</b>	<b>C</b>	<b>an..3</b>	<b>X</b>
	<b>9353</b>	<b>Government procedure, coded</b>	<b>C</b>	<b>an..3</b>	<b>X</b>
		<b>GOVERNMENT ACTION</b>	<b>C</b>		<b>X</b>
		Code indicating a type of government action.			
<b>C232</b>	<b>9415</b>	<b>Government agency, coded</b>	<b>C</b>	<b>an..3</b>	<b>X</b>
		To indicate government agencies that are involved.			
	<b>9411</b>	<b>Government involvement, coded</b>	<b>C</b>	<b>an..3</b>	<b>X</b>
		Indication of requirement and status of government involvement.			
	<b>9417</b>	<b>Government action, coded</b>	<b>C</b>	<b>an..3</b>	<b>X</b>
<b>C232</b>		To indicate type of government action such as inspection, detention, fumigation, security.			
	<b>9353</b>	<b>Government procedure, coded</b>	<b>C</b>	<b>an..3</b>	<b>X</b>
		Code identifying the treatment applied by the government to goods which are subject to a control.			
		<b>GOVERNMENT ACTION</b>	<b>C</b>		<b>X</b>
		Code indicating a type of government action.			
<b>C232</b>	<b>9415</b>	<b>Government agency, coded</b>	<b>C</b>	<b>an..3</b>	<b>X</b>
		To indicate government agencies that are involved.			
	<b>9411</b>	<b>Government involvement, coded</b>	<b>C</b>	<b>an..3</b>	<b>X</b>
		Indication of requirement and status of government involvement.			
	<b>9417</b>	<b>Government action, coded</b>	<b>C</b>	<b>an..3</b>	<b>X</b>
<b>C232</b>		To indicate type of government action such as inspection, detention, fumigation, security.			
	<b>9353</b>	<b>Government procedure, coded</b>	<b>C</b>	<b>an..3</b>	<b>X</b>
		Code identifying the treatment applied by the government to goods which are subject to a control.			
		<b>GOVERNMENT ACTION</b>	<b>C</b>		<b>X</b>
		Code indicating a type of government action.			
<b>C232</b>	<b>9415</b>	<b>Government agency, coded</b>	<b>C</b>	<b>an..3</b>	<b>X</b>
		To indicate government agencies that are involved.			
	<b>9411</b>	<b>Government involvement, coded</b>	<b>C</b>	<b>an..3</b>	<b>X</b>
		Indication of requirement and status of government involvement.			
	<b>9417</b>	<b>Government action, coded</b>	<b>C</b>	<b>an..3</b>	<b>X</b>
<b>C232</b>		To indicate type of government action such as inspection, detention, fumigation, security.			
	<b>9353</b>	<b>Government procedure, coded</b>	<b>C</b>	<b>an..3</b>	<b>X</b>
		Code identifying the treatment applied by the government to goods which are subject to a control.			

<b>Group:</b>	<b>NAD</b> Segment Group 4: Name and Address
<b>Position:</b>	0190
<b>Group:</b>	
<b>Level:</b>	1
<b>Usage:</b>	Conditional (Required)
<b>Max Use:</b>	5
<b>Purpose:</b>	A group of segments to identify a party and related contacts and references.
<b>Notes:</b>	<p>This group is used to identify the entities related with the whole manifest. The identification of the Message Sender (MS), Message Receiver (MR), Customs office (CM) and the Carrier (CA) must be sent. The others are optional.</p> <p>The identification of the Customs office was included since some ports have areas under jurisdiction of different Customs office. So the agent shall identify to which office is declaring the cargo. For this information, send code 'CM' in NAD:3035.</p> <p>The Carrier identification corresponds to the carrier identified in the first message related with the manifest, this is, the message with function '9' in BGM:1225. Note that when the message has the function 'Original' (BGM:1225='9') the carrier identified here must be the same carrier identified in all transport documents in the message, and all the transport documents must be related to the same carrier.</p> <p>The inclusion of the message sender (NAD:3035='MS') and the message receiver (NAD:3035='MR') is to separate the business level from the practical issues. For instance, allow that the entity that is sending the document can be different from the one which is the originator of the document. The same applies to the receiver versus the destination.</p> <p>The information about the transport documents can only be sent by the carrier's agent, cargo agent or by a legal Declarant's agent/representative. In these cases, information of the cargo agent on the CNI section must match with the information of this group (only the information of one carrier agent or cargo agent can be sent).</p> <p>In the communication between the Shipping Agents and the Port Authorities, the Message Receiver (MR) is the Port Authority. In this case the receiver is the Port of Leixões or the Port of Lisbon, then it can be identified by the NIF or by the EAN of the corresponding Port Authority.</p> <p>In the communication between the Port Authority and Customs, the receiver is the Customs identified by Customs Office Identification Code.</p>

## Segment Summary

	<b>Pos.</b>	<b>Seg.</b>		<b>Req.</b>	<b>Max.</b>	<b>Group:</b>
	<b>No.</b>	<b>ID</b>	<b>Name</b>	<b>Des.</b>	<b>Use</b>	<b>Repeat</b>
M	0200	NAD	Name and Address	M	1	
	0210		Segment Group 5: Contact Information	C		1

**Segment:** **NAD** Name and Address  
**Position:** 0200 (Trigger Segment)  
**Group:** SG4  
**Level:** 1  
**Usage:** Mandatory  
**Max Use:** 1  
**Purpose:** A segment to identify the party's name, address and function.

**Dependency Notes:****Semantic Notes:****Comments:****Notes:**

If NAD:3035='CA' then do not use DE:3055 and the identification placed in DE:3039 must be preceded by the ISO country code (2 digit) corresponding to the nationality of the carrier. In DE:1131 use the appropriate code that correctly identifies the type of number given to the Portuguese Customs at the moment of the protocol signature.

Today several entities have EAN codes. When the receiver or the sender is one of this entities, the respective code can be used. In this case DE:1131 shall not be used and DE:3055 must be '9'. For the following Port Authorities, these codes apply:

Port Authority of Leixões: 5600000017340  
 Port Authority of Lisbon: 5600000009710

When identifying a Customs Office use code '113' in DE:1131 and code '155' in DE:3055.

When identifying a Portuguese entity use code '167' in DE:1131 and code '155' in DE:3055, except when the entity is being identified by the EAN code.

Example: Declarant's agent/representative with tax number 510042365789.

NAD+AE+510042365789:167:155'

Example: Manifest to be presented to the customs office of Marítima de Lisboa (Alcantara).

NAD+CM+PT000040:113:155'

Example: Message recipient is the Port Authority of Leixoes identified by EAN code 5600000017340

NAD+MR+5600000017340::9'

Example: Greek carrier identified by VAT number 192384

NAD+CA+GR192384:52'

**Data Element Summary**

<b>Data Element</b>	<b>Component Element</b>	<b>Name</b>	<b>Base Attributes</b>	<b>User Attributes</b>
<b>3035</b>		<b>PARTY QUALIFIER</b>	<b>M an..3</b>	<b>M</b>
		Code giving specific meaning to a party.		
	AE	Declarant's agent/representative Any natural or legal person who makes a declaration to an official body on behalf of another natural or legal person, where legally permitted (CCC).		
	CA	Carrier (3126) Party undertaking or arranging transport of goods between named points.		
	CM	Customs Identification of customs authority relevant to the transaction or shipment.		
	CV	Consignee of vessel Description to be provided. <i>Only provided for backward compatibility. It will be treated like code 'CA'.</i>		
	MR	Message recipient Receiver of the message.		



**C082****PARTY IDENTIFICATION DETAILS****C****R**

Identification of a transaction party by code.

See segment notes.

**3039****Party id. identification****M****an..35****M**

Code identifying a party involved in a transaction.

If 3035 in ('AE', 'MR', 'MS') send tax payer number.

If the message receiver ('MR' in 3035) is the Port Authority of Lisbon or Leixões, then EAN code can also be used as an identification means of these authorities.

If 3035 is 'CM' send code according to list in pages 71-72 of NSTI/NCTS Declaração de Trânsito Informatizada - Documento Auxiliar ao Guia de Implementação das Mensagens EDI Versão 3, Anexo - Códigos a Utilizar.

If NAD:3035='CA' then place the number given to the Portuguese Customs at the moment of the protocol signature preceded by the ISO country code (2 digit) corresponding to the nationality of the carrier.

**1131****Code list qualifier****C****an..3****D**

Identification of a code list.

If the entity is being identified by the EAN code, then this element shall not be sent. See example in segment notes.

52

Value added tax identification

Value added tax identification code.

Use when the entity identified in DE:3039 is not Portuguese. Portuguese Customs code VIES.

53

Passport number

Number assigned to a passport.

Portuguese Customs code P.

113

Customs office

Customs administrative unit competent for the performance of Customs formalities, and the premises or other areas approved for the purpose by the competent authorities (CCC).

Use when the code in DE:3039 identifies a Customs Office, independent of its nationality.

167

Tax party identification

Code assigned by a tax authority to identify a party.

To use when the entity is Portuguese. Portuguese Customs code NIF.

174

Citizen identification

Portuguese Customs code BI.

Z02

Z03

**3055****Code list responsible agency, coded****C****an..3****D**

Code identifying the agency responsible for a code list.

If the entity is a Carrier (DE:3055 = 'CA'), then this element shall not be sent. See example in segment notes.

9

EAN (International Article Numbering association)

155

PT, Portuguese Customs

**C058****NAME AND ADDRESS****C****D**

Unstructured name and address: one to five lines.

This composite element is needed when the entity identified in the segment is the message sender (DE:3035 = 'MS'). This way the response can be directed to the appropriate destination.

If the Data Entry application is being used, the sent value identifies the Data Entry installation.

Otherwise, it identifies a point of origin of the message.

		See segment notes.			
	3124	<b>Name and address line</b> Free form name and address description. Use this element to specify the identification of the Data Entry installation.	<b>M</b>	<b>an..35</b>	<b>M</b>
C080	3124	<b>Name and address line</b>	<b>C</b>	<b>an..35</b>	<b>X</b>
	3124	<b>Name and address line</b>	<b>C</b>	<b>an..35</b>	<b>X</b>
	3124	<b>Name and address line</b>	<b>C</b>	<b>an..35</b>	<b>X</b>
	3124	<b>Name and address line</b>	<b>C</b>	<b>an..35</b>	<b>X</b>
		<b>PARTY NAME</b> Identification of a transaction party by name, one to five lines. Party name may be formatted.	<b>C</b>		<b>X</b>
	3036	<b>Party name</b> Name of a party involved in a transaction.	<b>M</b>	<b>an..35</b>	<b>X</b>
	3036	<b>Party name</b> Name of a party involved in a transaction.	<b>C</b>	<b>an..35</b>	<b>X</b>
	3036	<b>Party name</b> Name of a party involved in a transaction.	<b>C</b>	<b>an..35</b>	<b>X</b>
	3036	<b>Party name</b> Name of a party involved in a transaction.	<b>C</b>	<b>an..35</b>	<b>X</b>
	3036	<b>Party name</b> Name of a party involved in a transaction.	<b>C</b>	<b>an..35</b>	<b>X</b>
C059	3045	<b>Party name format, coded</b> Specification of the representation of a party name.	<b>C</b>	<b>an..3</b>	<b>X</b>
		<b>STREET</b> Street address and/or PO Box number in a structured address: one to three lines.	<b>C</b>		<b>X</b>
	3042	<b>Street and number/p.o. box</b> Street and number in plain language, or Post Office Box No.	<b>M</b>	<b>an..35</b>	<b>X</b>
	3042	<b>Street and number/p.o. box</b> Street and number in plain language, or Post Office Box No.	<b>C</b>	<b>an..35</b>	<b>X</b>
	3042	<b>Street and number/p.o. box</b> Street and number in plain language, or Post Office Box No.	<b>C</b>	<b>an..35</b>	<b>X</b>
	3164	<b>CITY NAME</b>	<b>C</b>	<b>an..35</b>	<b>X</b>
	3229	<b>COUNTRY SUB-ENTITY IDENTIFICATION</b>	<b>C</b>	<b>an..9</b>	<b>X</b>
	3251	<b>POSTCODE IDENTIFICATION</b>	<b>C</b>	<b>an..9</b>	<b>X</b>
	3207	<b>COUNTRY, CODED</b>	<b>C</b>	<b>an..3</b>	<b>X</b>

**Group:** **CTA** **Segment Group 5: Contact Information**  
**Position:** 0210  
**Group:** Segment Group 4 (Name and Address) Conditional (Required)  
**Level:** 2  
**Usage:** Conditional (Optional)  
**Max Use:** 1  
**Purpose:** A group of segments to identify a contact and its communications related to the party.

Segment Summary						
	<b>Pos.</b>	<b>Seg.</b>		<b>Req.</b>	<b>Max.</b>	<b>Group:</b>
	<b>No.</b>	<b>ID</b>	<b>Name</b>	<b>Des.</b>	<b>Use</b>	<b>Repeat</b>
M	0220	CTA	Contact Information	M	1	
R	0230	COM	Communication Contact	C	9	

**Segment:** **CTA** **Contact Information**  
**Position:** 0220 (Trigger Segment)  
**Group:** SG4-SG5  
**Level:** 2  
**Usage:** Mandatory  
**Max Use:** 1  
**Purpose:** A segment to identify a person or department within the party.  
**Dependency Notes:**  
**Semantic Notes:**  
**Comments:**  
**Notes:**

Example: Contact Mr. José Silva.

CTA+BF+:JOSE SILVA'

Data Element Summary				
<u>Data Element</u>	<u>Component Element</u>	<u>Name</u>	<u>Base Attributes</u>	<u>User Attributes</u>
3139		<b>CONTACT FUNCTION, CODED</b>	<b>C an..3</b>	<b>R</b>
		Code specifying the function of a contact (e.g. department or person).		
		BF Service contact		
		Department/person to be contacted in service matters.		
		IC Information contact		
		Department/person to contact for questions regarding transactions.		
C056		<b>DEPARTMENT OR EMPLOYEE DETAILS</b>	<b>C</b>	<b>R</b>
		Code and/or name of a department or employee. Code preferred.		
	3413	<b>Department or employee identification</b>	<b>C an..17</b>	<b>O</b>
		Internal identification code.		
		<i>Only provided for backward compatibility. Information will be treated like the one in 3412. Do not use 3413 and 3412 simultaneously.</i>		
	3412	<b>Department or employee</b>	<b>C an..35</b>	<b>R</b>
		The department or person within an organizational entity.		

**Segment:** **COM** Communication Contact  
**Position:** 0230  
**Group:** SG4-SG5  
**Level:** 3  
**Usage:** Conditional (Required)  
**Max Use:** 9  
**Purpose:** A segment to identify a communication number of a person or department to whom communication should be directed.

**Dependency Notes:****Semantic Notes:****Comments:****Notes:**

Example: Contact by phone number 229390700.

COM+229390700:TE'

Example: Contact by email john.mclane@mybusiness.com

COM+JOHN.MCLANE AT MYBUSINESS.COM:EM'

**Data Element Summary**

<u>Data Element</u>	<u>Component Element</u>	<u>Name</u>	<u>Base Attributes</u>	<u>User Attributes</u>
<b>C076</b>		<b>COMMUNICATION CONTACT</b>	<b>M</b>	<b>M</b>
		Communication number of a department or employee in a specified channel.		
	<b>3148</b>	<b>Communication number</b>	<b>M an..512</b>	<b>M</b>
		The communication number.		
	<b>3155</b>	<b>Communication channel qualifier</b>	<b>M an..3</b>	<b>M</b>
		Code identifying the type of communication channel being used.		
		UN/EDIFACT code list for Data Element 3155.		

<b>Group:</b>	<b>TDT</b>	<b>Segment Group 8: Details of Transport</b>
<b>Position:</b>	0350	
<b>Group:</b>		
<b>Level:</b>	1	
<b>Usage:</b>	Conditional (Optional)	
<b>Max Use:</b>	1	
<b>Purpose:</b>	A group of segments to describe all transport details of the voyage/flight or consolidation and of all parties involved.	
<b>Notes:</b>	<p>The information referred in this segment is to be given to the Port Authority through another process defined by "Processo de Meio de Transporte" specification. The connection between the document (manifest) and the means of transport is made through the Vessel Call Id stated in the SG1:RFF with SG1:RFF:1153 having 'ATZ' qualifier code.</p> <p>Although the information provided in this group will be not inserted into the application, data will be used for validation purposes against the information provided in the "Processo de Meio de Transporte".</p>	

Segment Summary				<b>Req.</b>	<b>Max.</b>	<b>Group:</b>
	<b><u>Pos.</u></b>	<b><u>Seg.</u></b>	<b><u>Name</u></b>	<b><u>Des.</u></b>	<b><u>Use</u></b>	<b><u>Repeat</u></b>
M	0360	TDT	Details of Transport	M	1	
O	0380	LOC	Place/Location Identification	C	9	
O	0390	DTM	Date/Time/Period	C	9	

**Segment:** **TDT** **Details of Transport**  
**Position:** 0360 (Trigger Segment)  
**Group:** SG8  
**Level:** 1  
**Usage:** Mandatory  
**Max Use:** 1  
**Purpose:** A segment to indicate information related to a certain stage of the transport, such as mode, means, type of means of transport, carrier, voyage/flight number, etc.

**Dependency Notes:****Semantic Notes:****Comments:****Notes:**

The information referred in this segment is to be given to the Port Authority through another process defined by "Processo de Meio de Transporte" specification.

Example: Maritime main-carriage transport, journey 872N of vessel MING ASIA with IMO number 973146, register in Portugal.

TDT+20+872N+1+++++973146:146:54:MING ASIA:PT'

**Data Element Summary**

<b>Data Element</b>	<b>Component Element</b>	<b>Name</b>	<b>Base Attributes</b>	<b>User Attributes</b>
<b>8051</b>		<b>TRANSPORT STAGE QUALIFIER</b>	<b>M an..3</b>	<b>M</b>
		Qualifier giving a specific meaning to the transport details.		
		20 Main-carriage transport		
		The primary stage in the movement of cargo from the point of origin to the intended destination.		
<b>8028</b>		<b>CONVEYANCE REFERENCE NUMBER</b>	<b>C an..17</b>	<b>O</b>
		Unique reference given by the carrier to a certain journey or departure of a means of transport (generic term).		
<b>C220</b>		<b>MODE OF TRANSPORT</b>	<b>C</b>	<b>O</b>
		Method of transport code or name. Code preferred.		
	<b>8067</b>	<b>Mode of transport, coded</b>	<b>C an..3</b>	<b>R</b>
		Coded method of transport used for the carriage of the goods.		
		UN/CEFACT Trade Facilitation Recommendation 19 - Codes for Modes of Transport.		
		1 Maritime Transport		
	<b>8066</b>	<b>Mode of transport</b>	<b>C an..17</b>	<b>X</b>
<b>C228</b>		<b>TRANSPORT MEANS</b>	<b>C</b>	<b>X</b>
		Code and/or name identifying the type of means of transport.		
	<b>8179</b>	<b>Type of means of transport identification</b>	<b>C an..8</b>	<b>X</b>
		Code defining the type of the means of transport being utilized.		
	<b>8178</b>	<b>Type of means of transport</b>	<b>C an..17</b>	<b>X</b>
		Description of the type of the means of transport being utilized.		
<b>C040</b>		<b>CARRIER</b>	<b>C</b>	<b>X</b>
		Identification of a carrier by code and/or by name. Code preferred.		
	<b>3127</b>	<b>Carrier identification</b>	<b>C an..17</b>	<b>X</b>
		Identification of party undertaking or arranging transport of goods between named points.		
	<b>1131</b>	<b>Code list qualifier</b>	<b>C an..3</b>	<b>X</b>
		Identification of a code list.		
	<b>3055</b>	<b>Code list responsible agency, coded</b>	<b>C an..3</b>	<b>X</b>
		Code identifying the agency responsible for a code list.		
	<b>3128</b>	<b>Carrier name</b>	<b>C an..35</b>	<b>X</b>
		Name of party undertaking or arranging transport of goods between named points.		
<b>8101</b>		<b>TRANSIT DIRECTION, CODED</b>	<b>C an..3</b>	<b>X</b>
<b>C401</b>		<b>EXCESS TRANSPORTATION INFORMATION</b>	<b>C</b>	<b>X</b>
		To provide details of reason for, and responsibility for, use of transportation other than normally utilized.		
	<b>8457</b>	<b>Excess transportation reason, coded</b>	<b>M an..3</b>	<b>X</b>

## Common Platform - Manifest Message Format - Version 1.5e

C222	8459	Excess transportation responsibility, coded	M	an..3	X
		Indication of responsibility for excess transportation.			
	7130	Customer authorization number	C	an..17	X
		Customer provided authorization number to allow supplier to ship goods under specific freight conditions. This number will be transmitted back to customer in the dispatch advice message.			
		TRANSPORT IDENTIFICATION	C		O
		Code and/or name identifying the means of transport.			
	8213	Id. of means of transport identification	C	an..9	O
		Identification of the means of transport by name or number.			
		IMO number.			
		The IMO number will be checked against the information about the agent associated with the vessel call provided to the Port Authority (according with the procedures of "Processo Meio Transporte").			
	1131	Code list qualifier	C	an..3	D
		Identification of a code list.			
		Must be used if information is sent in data element 8213.			
		146	Means of transport identification		
			Code identifying the name or number of a means of transport (vessel, vehicle).		
3055	Code list responsible agency, coded	C	an..3	D	
	Code identifying the agency responsible for a code list.				
	Must be used if information is sent in data element 8213.				
	54	IMO (International Maritime Organisation)			
		International Maritime Organisation.			
	ZAP				
		Only provided for backward compatibility. It will be treated like code '54'.			
8212	Id. of the means of transport	C	an..35	O	
	Identification of the means of transport by name or number.				
	Vessel name.				
8453	Nationality of means of transport, coded	C	an..3	O	
	Coded name of the country in which a means of transport is registered.				
	Use ISO 3166, country code (alphabetic of 2).				
8281	TRANSPORT OWNERSHIP, CODED	C	an..3	X	



**Segment:** **LOC** Place/Location Identification  
**Position:** 0380  
**Group:** SG8  
**Level:** 2  
**Usage:** Conditional (Optional)  
**Max Use:** 9  
**Purpose:** A segment indicating relevant locations related to the transport of the consolidation (e.g. place of loading, place of discharge, transshipment place etc.) dependent on the transport stage.

**Dependency Notes:****Semantic Notes:****Comments:****Notes:**

Example: Next port of call: Leixões.

LOC+61+PTLEI:139:6'

Only provided for backward compatibility. The information referred in this segment is to be given to the Port Authority through another process defined by "Processo de Meio de Transporte" specification.

Data Element Summary				
<u>Data Element</u>	<u>Component Element</u>	<u>Name</u>	<u>Base Attributes</u>	<u>User Attributes</u>
3227		<b>PLACE/LOCATION QUALIFIER</b> Code identifying the function of a location. 61 Next port of call Next port which the vessel is going to call upon. 92 Routing Indication of a routing place.	<b>M an..3</b>	<b>M</b>
C517		<b>LOCATION IDENTIFICATION</b> Identification of a location by code or name.	<b>C</b>	<b>R</b>
	3225	<b>Place/location identification</b> Identification of the name of place/location, other than 3164 City name. UN/ECE Recommendation 16 (3rd edition) - UN/LOCODE - Codes for Ports and Other Locations (Doc. Ref. ECE/TRADE/227) upgraded to 2003.2 version.	<b>C an..25</b>	<b>R</b>
	1131	<b>Code list qualifier</b> Identification of a code list. 139 Port A location having facilities for means of transport to load or discharge cargo.	<b>C an..3</b>	<b>R</b>
	3055	<b>Code list responsible agency, coded</b> Code identifying the agency responsible for a code list. 6 UN/ECE (United Nations - Economic Commission for Europe)	<b>C an..3</b>	<b>R</b>
	3224	<b>Place/location</b> Name of place/location, other than 3164 City name. Name of the place/port. It is mandatory if the UN/LOCODE in the data element 3225 is omitted.	<b>C an..70</b>	<b>O</b>
C519		<b>RELATED LOCATION ONE IDENTIFICATION</b> Identification the first related location by code or name.	<b>C</b>	<b>X</b>
	3223	<b>Related place/location one identification</b> Specification of the first related place/location by code.	<b>C an..25</b>	<b>X</b>
	1131	<b>Code list qualifier</b> Identification of a code list.	<b>C an..3</b>	<b>X</b>
	3055	<b>Code list responsible agency, coded</b> Code identifying the agency responsible for a code list.	<b>C an..3</b>	<b>X</b>
	3222	<b>Related place/location one</b> Specification of the first related place/location by name.	<b>C an..70</b>	<b>X</b>
C553		<b>RELATED LOCATION TWO IDENTIFICATION</b> Identification of second related location by code or name.	<b>C</b>	<b>X</b>

Common Platform - Manifest Message Format - Version 1.5e

<b>3233</b>	<b>Related place/location two identification</b>	<b>C</b>	<b>an..25</b>	<b>X</b>
	Specification of a second related place/location by code.			
<b>1131</b>	<b>Code list qualifier</b>	<b>C</b>	<b>an..3</b>	<b>X</b>
	Identification of a code list.			
<b>3055</b>	<b>Code list responsible agency, coded</b>	<b>C</b>	<b>an..3</b>	<b>X</b>
	Code identifying the agency responsible for a code list.			
<b>3232</b>	<b>Related place/location two</b>	<b>C</b>	<b>an..70</b>	<b>X</b>
	Specification of a second related place/location by name.			
<b>5479</b>	<b>RELATION, CODED</b>	<b>C</b>	<b>an..3</b>	<b>X</b>

**Segment:** **DTM** Date/Time/Period  
**Position:** 0390  
**Group:** SG8  
**Level:** 2  
**Usage:** Conditional (Optional)  
**Max Use:** 9  
**Purpose:** A segment indicating pertinent date(s) and time(s) (e.g. date of departure/arrival etc.) dependent on the transport stage.

**Dependency Notes:****Semantic Notes:****Comments:****Notes:**

Example: ETD for 2003/10/02 06:00

DTM+133:200310020600:203'

Example: Attention that in this case the defined escape character must be used in the date/time format, if the time zone is positive in relation to GMT. If the escape character is '?' then

DTM+133:200310081525?+03:303'

*Only provided for backward compatibility. The information referred in this segment is to be given to the Port Authority through another process defined by "Processo de Meio de Transporte" specification.*

**Data Element Summary**

<u>Data Element</u>	<u>Component Element</u>	<u>Name</u>	<u>Base Attributes</u>	<u>User Attributes</u>
<b>C507</b>		<b>DATE/TIME/PERIOD</b>	<b>M</b>	<b>M</b>
		Date and/or time, or period relevant to the specified date/time/period type.		
	<b>2005</b>	<b>Date/time/period qualifier</b>	<b>M an..3</b>	<b>M</b>
		Code giving specific meaning to a date, time or period.		
		132 Arrival date/time, estimated		
		(2348) Date/time when carrier estimates that a means of transport should arrive at the port of discharge or place of destination.		
		133 Departure date/time, estimated		
		Date/time when carrier estimates that a means of transport should depart at the place of departure.		
	<b>2380</b>	<b>Date/time/period</b>	<b>C an..35</b>	<b>R</b>
		The value of a date, a date and time, a time or of a period in a specified representation.		
		According with UN/ECE Recommendation N°7.		
	<b>2379</b>	<b>Date/time/period format qualifier</b>	<b>C an..3</b>	<b>R</b>
		Specification of the representation of a date, a date and time or of a period.		
		203 CCYYMMDDHHMM		
		Calendar date including time with minutes: C=Century; Y=Year; M=Month; D=Day; H=Hour; M=Minutes.		
		303 CCYYMMDDHHMMZZZ		
		See 203 plus Z=Time zone.		

<b>Group:</b>	<b>CNI</b>	<b>Segment Group 19: Consignment Information</b>
<b>Position:</b>	0860	
<b>Group:</b>		
<b>Level:</b>	1	
<b>Usage:</b>	Conditional (Dependent)	
<b>Max Use:</b>	9999	
<b>Purpose:</b>	<p>A segment group to give information about all consignments included in a voyage/flight or consolidation. The segment group can be used in two different manners to serve different approaches to consolidate messages:</p> <ul style="list-style-type: none"> <li>- Short form consolidation message</li> </ul> <p>In this situation, single consignment based functional messages (e.g. booking and/or instruction messages) have been sent on a progressive basis between exchanging partners (e.g. freight forwarder on the export side to freight forwarder on the import side). When the loading of the vessel/aircraft or consolidation is complete the IFCSUM-message will be sent and will use the CNI-segments to identify the transport document/message number (e.g. bill of lading, air-way bill, etc.) of every consignment, the details of which have already been sent as separate single consignment based messages (e.g. booking and/or instruction messages) or which will be sent as separate single consignment based messages following the IFCSUM-message using the option of grouping with the UNG-service-segment in a transmission. When the carrier himself loads consignments in a container or ULD the segment SGP and/or TPL following the CNI can be used to indicate in which equipment specified in the EQD-group on top level and/or which means of transport specified in the TDT-group on top level the consignment is loaded. Thus the short form IFCSUM-message operates as a reconciliation and control statement.</p> <li>- Extended form consolidation message</li> <p>In this situation, the data for each individual consignment has NOT been sent to the receiving partner by means of single consignment based messages (e.g. booking and/or instruction messages) separate to the IFCSUM message. In these circumstances it is possible to include the details of each consignment into the IFCSUM-message. In that case the segment (group) SGP and TPL following the segment CNI will not be used. For every consignment the complete structure of a single consignment based message can be used starting with the segment CNI replacing the BGM.</p> <p>Thus the extended form IFCSUM-message has not the function of referencing but to show as full a set of consignment data as is necessary to meet the requirements of type of consolidation message being constructed, e.g. Cargo vs. Full Freight.</p>	
<b>Notes:</b>	<p>This group is to provide the data related with the Document of Transport under which the cargo is being transported into/from the port. Typically the document is the Bill of Lading, but not exclusively.</p> <p>See notes in element BGM:1225 to see when this group has to be send.</p> <p>Somehow the transport document must be identified clearly. This implies that unique keys must exist. Being aware that there isn't an "universal" numbering system that would prevent different documents of having the same identification, the identification key must be found by composing some other available data. This way, the goal is achieved but avoiding unnecessary impacts in current business processes.</p> <p>In this framework, the transport documents presented in this segment group, will be identified by a key composed of the following data elements (all present in SG19):</p> <ul style="list-style-type: none"> <li>- SG26:RFF:1153</li> <li>- SG26:RFF:1154</li> <li>- SG26:DTM:2380</li> <li>- SG34:NAD:3039</li> </ul> <p>Nowadays in the context of shipping, as in business in general, processes are supported by information systems with enough power to deal with a set of data as a single item, without creating additional impact to the user and without affecting the business role of that data. This means that concatenation is not needed and must be avoided. The key must be determined by considering the elements above, but respecting the independent nature of each one.</p>	

**Segment Summary**

Pos.	Seg.	Req.	Max.	Group:
Based on IFCSUM D.97A		36 / 109	Doc. Id: CPLAT015E - 2014/07/30	

Common Platform - Manifest Message Format - Version 1.5e

	<u>No.</u>	<u>ID</u>	<u>Name</u>	<u>Des.</u>	<u>Use</u>	<u>Repeat</u>
M	0870	CNI	Consignment Information	M		1
O	1010	CNT	Control Total	C		6
O	1050	FTX	Free Text	C		4
	1060		Segment Group 24: Place/Location Identification	C		5
	1120		Segment Group 26: Reference	C		999
	1400		Segment Group 31: Details of Transport	C		2
	1500		Segment Group 34: Name and Address	C		9
	1820		Segment Group 41: Goods Item Details	C		999
	2570		Segment Group 60: Equipment Details	C		999

**Segment:** **CNI** Consignment Information  
**Position:** 0870 (Trigger Segment)  
**Group:** SG19  
**Level:** 1  
**Usage:** Mandatory  
**Max Use:** 1  
**Purpose:** A segment to indicate consignments included in the consolidation using the transport document/message number or to replace the segment BGM of a single consignment based message structure.

**Dependency Notes:****Semantic Notes:****Comments:****Notes:**

Example: Third consignment in the message.

CNI+3'

The distinction provided by element 1373 is implemented by the usage of segment group 26.

**Data Element Summary**

<u>Data Element</u>	<u>Component Element</u>	<u>Name</u>	<u>Base Attributes</u>	<u>User Attributes</u>
1490		<b>CONSOLIDATION ITEM NUMBER</b> Serial number differentiating each separate consignment included in the consolidation. Must be unique for in each message.	<b>C n..4</b>	<b>R</b>
C503		<b>DOCUMENT/MESSAGE DETAILS</b> Identification of document/message by number, status, source and/or language.	<b>C</b>	<b>O</b>
	1004	<b>Document/message number</b> Reference number assigned to the document/message by the issuer. <i>Only provided for backward compatibility. Information in the element will be treated like RFF:1154 in segment group 26.</i>	<b>C an..35</b>	<b>O</b>
	1373	<b>Document/message status, coded</b> To identify the status of a document/message. <i>Only provided for backward compatibility. Information in the element will be ignored.</i> ZZ1 <i>Only provided for backward compatibility. It will be treated like a goods consignment except empty container bill (RFF:1153='AEW') and travel service (RFF='AUE').</i> ZZ2 <i>Only provided for backward compatibility. It will be treated like travel service (RFF:1153='AUE').</i> ZZ3 <i>Only provided for backward compatibility. It will be treated like empty container bill (RFF:1153='AEW').</i> <i>Note that this code is presently used to specify that the consignment is related with empty containers. New implementations are advised to use 'AEW'.</i>	<b>C an..3</b>	<b>O</b>
	1366	<b>Document/message source</b>	<b>C an..35</b>	<b>X</b>
	3453	<b>Language, coded</b>	<b>C an..3</b>	<b>X</b>
1312		<b>CONSIGNMENT LOAD SEQUENCE NUMBER</b>	<b>C n..4</b>	<b>X</b>

**Segment:** **CNT Control Total**  
**Position:** 1010  
**Group:** SG19  
**Level:** 2  
**Usage:** Conditional (Optional)  
**Max Use:** 6  
**Purpose:** A segment to specify totals for a consignment.  
**Dependency Notes:**  
**Semantic Notes:**  
**Comments:**  
**Notes:**

Although this segment is optional, it is advised to send it in order to inform the number of packages in the consignment (DE:6069 = 11).

For physical measures (weight), the value in element 6066 shall be rounded to two decimal positions. Decimal values equal or above 0,005, shall be rounded to 0,01. Decimal values lower than 0,005 shall be rounded to 0,00. The decimal point shall not be sent. The two rightmost digits will be considered as the decimal position. Example, a volume of 66,357 cubic meters shall be reported as 6636 and will be interpreted as 66,36 by the receiver.

In case of bulk cargo the number of volumes is 1.

Example: Consignment total gross weight: 21.000 Kg.

CNT+7:2100000:KGM'

Example: Total gross measurement/cube: 53,2 m3.

CNT+26:5320:MTQ'

Example: Total quantity of volumes present in the consignment: 20.

CNT+11:20'

*For backward compatibility, more than one occurrence is accepted, but information will be ignored.*

#### Data Element Summary

<u>Data Element</u>	<u>Component Element</u>	<u>Name</u>	<u>Base Attributes</u>	<u>User Attributes</u>
<b>C270</b>		<b>CONTROL</b>	<b>M</b>	<b>M</b>
		Control total for checking integrity of a message or part of a message.		
	<b>6069</b>	<b>Control qualifier</b>	<b>M an..3</b>	<b>M</b>
		Determines the source data elements in the message which forms the basis for 6066 Control value.		
		7 Total gross weight		
		Code to indicate total gross weight of a consignment.		
		11 Total number of packages		
		[7370] Total number of packages of the entire consignment.		
		16 Total number of equipment		
		Total number of equipment mentioned in the message.		
		26 Total gross measurement/cube		
		Total gross cubic measurement of the goods, including packing but excluding transport equipment.		
		30 Total number of empty containers		
		The total number of empty containers mentioned in the message.		
	<b>6066</b>	<b>Control value</b>	<b>M n..18</b>	<b>M</b>
		Value obtained from summing the values specified by the Control Qualifier throughout the message (Hash total).		
	<b>6411</b>	<b>Measure unit qualifier</b>	<b>C an..3</b>	<b>D</b>
		Indication of the unit of measurement in which weight (mass), capacity, length, area, volume or other quantity is expressed.		
		UN/CEFACT Trade Facilitation Recommendation 20 - Codes for Units of Measure used in international trade - Annex II.		

Common Platform - Manifest Message Format - Version 1.5e

KGM

kilogram

Use when 6069 is '7'.

MTQ

cubic meter

Use when 6069 is '26'.



**Segment:** **FTX** Free Text  
**Position:** 1050  
**Group:** SG19  
**Level:** 2  
**Usage:** Conditional (Optional)  
**Max Use:** 4  
**Purpose:** A segment to specify free form or processable supplementary information, such as status of transport, remarks to be printed on the transport documents (where required), consignment remarks, insurance instructions, etc., or any other additional information.

**Dependency Notes:****Semantic Notes:****Comments:****Notes:**

This segment may be used to send several information related with the transport document.

If DE:4451 is 'AAI' then the segment is being used for sending general information.

If DE:4451 is 'BLR' then the segment contains remarks present in the transport document.

If DE:4451 is 'CHG' then the segment contains the reasons why the transport document is being changed. This usage is required always a transport document is being changed. That is, when the values of BGM:1225 is in {'2','3','4'}.

If DE:4451 is 'CUS' then the segment states whether there is an unique transport contract involved in the transportation process or not. If positive, the segment allows to state if the expression "EXPORT" is printed or not in the unique transport contract.

Example: For the Port Authority only. In case there are goods exempted under article 20, the article and the item should be indicated here for discount purposes. There will be a codification for goods that are not subject of "TUP Carga" charges.

FTX+AAI+++GOODS UNDER ARTICLE 20'

Example: The process involves an unique transport contract that does not have the expression "EXPORT" printed.

FTX+CUS+++YES:NO'

**Data Element Summary**

<u>Data Element</u>	<u>Component Element</u>	<u>Name</u>	<u>Base Attributes</u>	<u>User Attributes</u>
4451		<b>TEXT SUBJECT QUALIFIER</b>	<b>M an..3</b>	<b>M</b>
		Code specifying subject of a free text.		
		AAI General information		
		AAS Bill of lading remarks		
		<i>Only provided for backward compatibility. It will be treated like code 'BLR'.</i>		
		BLR Transport document remarks		
		Remarks concerning the complete consignment to be printed on the bill of lading.		
		CHG Change information		
		Note contains change information.		
		CUS Customs declaration information		
		Note contains customs declaration information.		
		The usage of this qualifier is to state if there is an unique transport contract involved in this transport process. If this is the case, then this qualifier is also used to state if the unique transport contract has been marked with the "EXPORT" expression or not.		
4453		<b>TEXT FUNCTION, CODED</b>	<b>C an..3</b>	<b>X</b>
C107		<b>TEXT REFERENCE</b>	<b>C</b>	<b>X</b>
		Coded reference to a standard text and its source.		
	4441	<b>Free text identification</b>	<b>M an..17</b>	<b>X</b>
		Free text in coded form.		

## Common Platform - Manifest Message Format - Version 1.5e

<b>C108</b>	<b>1131</b>	<b>Code list qualifier</b> Identification of a code list.	<b>C</b>	<b>an..3</b>	<b>X</b>
	<b>3055</b>	<b>Code list responsible agency, coded</b> Code identifying the agency responsible for a code list.	<b>C</b>	<b>an..3</b>	<b>X</b>
		<b>TEXT LITERAL</b> Free text; one to five lines.	<b>C</b>		<b>O</b>
	<b>4440</b>	<b>Free text</b> Free text field available to the message sender for information.	<b>M</b>	<b>an..70</b>	<b>M</b>
		If element 4451 is 'CUS' then send the word "YES" or the word "NO" to state if there is or there is not an unique transport contract involved in the transport process.			
	<b>4440</b>	<b>Free text</b> Free text field available to the message sender for information.	<b>C</b>	<b>an..70</b>	<b>O</b>
		If element 4451 is 'CUS' then send the word "YES" or the word "NO" to state that the "EXPORT" expression is printed in the unique transport contract or not. This is only to be sent if the first occurrence of 4440 is "YES".			
	<b>4440</b>	<b>Free text</b> Free text field available to the message sender for information.	<b>C</b>	<b>an..70</b>	<b>O</b>
	<b>4440</b>	<b>Free text</b> Free text field available to the message sender for information.	<b>C</b>	<b>an..70</b>	<b>O</b>
	<b>4440</b>	<b>Free text</b> Free text field available to the message sender for information.	<b>C</b>	<b>an..70</b>	<b>O</b>
<b>3453</b>		<b>LANGUAGE, CODED</b>	<b>C</b>	<b>an..3</b>	<b>X</b>

<b>Group:</b>	<b>LOC</b> Segment Group 24: Place/Location Identification
<b>Position:</b>	1060
<b>Group:</b>	Segment Group 19 (Consignment Information) Conditional (Dependent)
<b>Level:</b>	2
<b>Usage:</b>	Conditional (Required)
<b>Max Use:</b>	5
<b>Purpose:</b>	A group of segments to specify locations and related date(s)/time(s) which apply to the entire consignment, e.g. place of transshipment.
<b>Notes:</b>	<p>This group is to specify the locations that normally appear in a transport contract (typically a BL). Please note that these places are at contract level and not at operational level.</p> <p>This group is also used to state the place where the transport document was issued. This usage is a Customs requirement. For this purpose, SG24:LOC:3227 must have code '91'.</p> <p>All qualifiers and the associated information must be provided.</p>

Segment Summary						
	<u>Pos.</u> <u>No.</u>	<u>Seg.</u> <u>ID</u>	<u>Name</u>	<u>Req.</u> <u>Des.</u>	<u>Max.</u> <u>Use</u>	<u>Group:</u> <u>Repeat</u>
M	1070	LOC	Place/Location Identification	M	1	

<b>Segment:</b>	<b>LOC</b> Place/Location Identification
<b>Position:</b>	1070 (Trigger Segment)
<b>Group:</b>	SG19-SG24
<b>Level:</b>	2
<b>Usage:</b>	Mandatory
<b>Max Use:</b>	1
<b>Purpose:</b>	A segment to identify a location applying to the entire consignment.
<b>Dependency Notes:</b>	
<b>Semantic Notes:</b>	
<b>Comments:</b>	
<b>Notes:</b>	

In case of empty containers being repositioning, and the ports/places of receipt/loading or delivery/discharge (depending of the manifest type) are not known at the moment of the operations, then it is admissible the use of code QU999 to give notice of that situation. This is only admitted is the is the document of transport type is Empty Container Bill (qualifier AEW in SG26:RFF:1153).

Example: Place of Receipt: Yantian, Port of Loading: Rotterdam, Port of Discharge: Leixoes

LOC+88+CNYTN:139:6'  
 LOC+9+NLRTM:139:6'  
 LOC+11+PTLEI:139:6'

*Next rules apply to goods consignment (CNI:1373=<'ZZ1' in the APL project)*

1. If this is a loading manifest BGM(1001)=833, and 3227=9 then 3225=PTLIS (if the loading port is Lisbon) or PTLEI (if the loading port is Leixões) or PTSIE (if the loading port is Sines) and 1131=139 and 3055=6.
2. If this is a discharge manifest BGM(1001)=785 and 3227=11 then 3225=PTLIS (if the discharge port is Lisbon) or PTLEI (if the discharge port is Leixões) or PTSIE (if the discharge port is Sines) and 1131=139 and 3055=6

*For other consignments (CNI:1373<>'ZZ1' in the APL project)*

1. In case of B/Ls type ZZ2 or ZZ3 (CNI :1373 = ZZ2 or ZZ3), once the place of origin is unknown, this will be displayed using code ZZZZ, with literal UNKOWN
2. In case of B/Ls type ZZ3 (CNI :1373 = ZZ3), once the place of load is unknown, this will be displayed using code ZZZZ, with literal UNKOWN
3. In case of B/Ls type ZZ2 or ZZ3 (CNI :1373 = ZZ2 or ZZ3), once the place of destination is unknown, this will be displayed using code ZZZZ, with literal UNKOWN

*In the case of qualifiers '88', '7' and '91' when the LOCODE is unknown, the country and a brief description of the local must be provided.*

*These rules defined this way are for backward compatibility. The rules will be checked but using different segments and elements in new implementations.*

Data Element Summary				
<u>Data Element</u>	<u>Component Element</u>	<u>Name</u>	<u>Base Attributes</u>	<u>User Attributes</u>
3227		PLACE/LOCATION QUALIFIER	M an..3	M
		Code identifying the function of a location.		
	5	Place of departure (3214) Port, airport or other location from which a means of transport is scheduled to depart or has departed. <i>Only provided for backward compatibility. It will be treated like '88'.</i>		
	7	Place of delivery (3246) Place to which the goods are to be finally delivered under transport contract terms (operational term).		
	8	Place of destination Port, airport or other location to which a means of transport is destined. <i>Only provided for backward compatibility. It will be treated like '7'.</i>		
	9	Place/port of loading (3334 + 3230) Seaport, airport, freight terminal, rail station or other place at which the goods (cargo) are loaded on to the means of transport being used for their carriage.		
	11	Place/port of discharge (3392 + 3414) Seaport, airport, freight terminal, rail station or other place at which the goods (cargo) are unloaded from the means of transport having been used for their carriage.		

	88	Place of receipt Identification of the location at which the cargo is actually received.			
	91	Place of document issue The place or location where a document is issued.			
<b>C517</b>		<b>LOCATION IDENTIFICATION</b>	<b>C</b>		<b>R</b>
		Identification of a location by code or name.			
	<b>3225</b>	<b>Place/location identification</b>	<b>C</b>	<b>an..25</b>	<b>R</b>
		Identification of the name of place/location, other than 3164 City name. UN/ECE Recommendation 16 (3rd edition) - UN/LOCODE - Codes for Ports and Other Locations (Doc. Ref. ECE/TRADE/227) upgraded to 2003.2 version. When the Locode is unknown or the location is unknown then place the ISO 2-letter country code. In this case element 3224 must be sent.			
	<b>1131</b>	<b>Code list qualifier</b>	<b>C</b>	<b>an..3</b>	<b>R</b>
		Identification of a code list.			
	139	Port A location having facilities for means of transport to load or discharge cargo.			
	162	Country Identification of a country.			
	<b>3055</b>	<b>Code list responsible agency, coded</b>	<b>C</b>	<b>an..3</b>	<b>R</b>
		Code identifying the agency responsible for a code list.			
	5	ISO (International Organization for Standardization)			
	6	UN/ECE (United Nations - Economic Commission for Europe)			
	<b>3224</b>	<b>Place/location</b>	<b>C</b>	<b>an..70</b>	<b>D</b>
		Name of place/location, other than 3164 City name. Name of the place/location. It is required if the UN/LOCODE in the data element 3225 is omitted and only the ISO country code is sent. If the location is not known then the expression "UNKNOWN" must be used. Only allowed for qualifiers '88', '7' and '91' in element 3227.			
<b>C519</b>		<b>RELATED LOCATION ONE IDENTIFICATION</b>	<b>C</b>		<b>X</b>
		Identification the first related location by code or name.			
	<b>3223</b>	<b>Related place/location one identification</b>	<b>C</b>	<b>an..25</b>	<b>X</b>
		Specification of the first related place/location by code.			
	<b>1131</b>	<b>Code list qualifier</b>	<b>C</b>	<b>an..3</b>	<b>X</b>
		Identification of a code list.			
	<b>3055</b>	<b>Code list responsible agency, coded</b>	<b>C</b>	<b>an..3</b>	<b>X</b>
		Code identifying the agency responsible for a code list.			
	<b>3222</b>	<b>Related place/location one</b>	<b>C</b>	<b>an..70</b>	<b>X</b>
		Specification of the first related place/location by name.			
<b>C553</b>		<b>RELATED LOCATION TWO IDENTIFICATION</b>	<b>C</b>		<b>X</b>
		Identification of second related location by code or name.			
	<b>3233</b>	<b>Related place/location two identification</b>	<b>C</b>	<b>an..25</b>	<b>X</b>
		Specification of a second related place/location by code.			
	<b>1131</b>	<b>Code list qualifier</b>	<b>C</b>	<b>an..3</b>	<b>X</b>
		Identification of a code list.			
	<b>3055</b>	<b>Code list responsible agency, coded</b>	<b>C</b>	<b>an..3</b>	<b>X</b>
		Code identifying the agency responsible for a code list.			
	<b>3232</b>	<b>Related place/location two</b>	<b>C</b>	<b>an..70</b>	<b>X</b>
		Specification of a second related place/location by name.			
<b>5479</b>		<b>RELATION, CODED</b>	<b>C</b>	<b>an..3</b>	<b>X</b>

<b>Group:</b>	<b>RFF</b>	<b>Segment Group 26: Reference</b>
<b>Position:</b>	1120	
<b>Group:</b>	Segment Group 19 (Consignment Information)	Conditional (Dependent)
<b>Level:</b>	2	
<b>Usage:</b>	Conditional (Required)	
<b>Max Use:</b>	999	
<b>Purpose:</b>	A group of segments containing a reference and constants which apply to the entire consignment.	
<b>Notes:</b>	<p>This group is used to send any references associated with the consignment, including the document number.</p> <p>At least the references to the following items are expected:</p> <ul style="list-style-type: none"> <li>- A transport document according to list provided in DE:1153;</li> <li>- Booking (RFF:1153 in 'BN') before the issue of the transport document. After the transport document is issued it is strongly advised that the booking reference is sent in order to relate the booking with the transport document.</li> </ul> <p>Special care to the situation where segment group 31 with TDT:8067 is '1' and 8051 in the same segment is '10'. In this case this group must be used to send the reference to the previous transport document (RFF:1153 must be 'ANK') and must be used to send the previous Customs vessel call Id, known as "Contramarca" (RFF:1153 must be 'AFM'). If in this group TDT:8067 is '1' and 8051 in the same segment is '30' then the group can be used to send the reference to the next transport document and the next Customs vessel call Id, if known, using the same qualifiers in RFF:1153.</p> <p>If the message function is different of 2, 9, 46 or 47 then the Customs Summary Declaration Number must be provided by using qualifier ABT in element RFF:1153.</p> <p>If the message function is 2 and the document of transport being sent resulted from an unfolding (desdoblamiento) process (see notes in FTX segment at message header level), one of the two following references must sent (optionally both). One is the Customs Summary Declaration of the unfolded (desdoblado) document of transport using qualifier ABT in element RFF:1153. The other is the identification of the document of transport that was unfolded (desdoblado) using the qualifier CN in element RFF:1153.</p>	

## Segment Summary

	<b>Pos.</b>	<b>Seg.</b>		<b>Req.</b>	<b>Max.</b>	<b>Group:</b>
	<b>No.</b>	<b>ID</b>	<b>Name</b>	<b>Des.</b>	<b>Use</b>	<b>Repeat</b>
M	1130	RFF	Reference	M	1	
R	1140	DTM	Date/Time/Period	C	1	

**Segment:** **RFF** Reference  
**Position:** 1130 (Trigger Segment)  
**Group:** SG19-SG26  
**Level:** 2  
**Usage:** Mandatory  
**Max Use:** 1  
**Purpose:** A segment to express a reference which applies to the entire consignment such as: the document/message number that is to be updated by this very message (according to data element 1225 Message Function, Coded in segment BGM), booking reference, order number, insurance contract, etc.

**Dependency Notes:****Semantic Notes:****Comments:****Notes:**

Being aware the booking is just a reference that has associated the same information that later will be part or the whole of a transport document, it will be treated like a transport document if not associated with one. When associated with a transport document, then the booking is treated just like a reference.

All references, except the booking (according to the previous paragraph), must be associated with a transport document.

If the document of transport resulted from an unfolding (desdobramento) process, then use qualifier 'CN' in DE:1153 to state that the value in DE:1154 identifies the document of transport that was unfolded (desdobrado) and sent in a previous message.

For each occurrence of segment group 19, if there are several references that correspond to transport documents, then the first to be declared will be considered as the identification of the document being presented in by the group. All others will be considered as references.

Example: BL number DKLI0200001

RFF+BM:DKLI0200001'

**Data Element Summary**

<u>Data Element</u>	<u>Component Element</u>	<u>Name</u>	<u>Base Attributes</u>	<u>User Attributes</u>
<b>C506</b>		<b>REFERENCE</b> Identification of a reference.	<b>M</b>	<b>M</b>
	<b>1153</b>	<b>Reference qualifier</b> Code giving specific meaning to a reference segment or a reference number.	<b>M an..3</b>	<b>M</b>
		AAE Goods declaration number Reference number assigned to a goods declaration. Reference.		
		AAM Waybill number Reference number assigned to a waybill, see: 1001 = 700. Document of Transport.		
		AAO Consignee's shipment reference number [1362] Reference assigned by the consignee to a shipment. Reference.		
		ABE Declarant's reference number Unique reference number assigned to a document or a message by the declarant for identification purposes. Reference.		
		ABT Customs declaration number [1426] Number, assigned or accepted by Customs, to identify a Goods declaration. Reference. Use to inform the Customs Summary Declaration Number.		
		ACW Reference number to previous message Reference number assigned to the message which was previously issued (e.g. in the case of a cancellation, the primary reference of the message to be cancelled will be quoted in this element).		

## Common Platform - Manifest Message Format - Version 1.5e

	This code is to be used in scenario of the short form consolidation message. In this case, the group is referring to previous sent single consignment messages.
ADO	Container work order reference number Reference number assigned by the principal to the work order for a (set of) container(s). Reference.
AEI	Registration number of previous Customs declaration Registration number of the Customs declaration lodged for the previous Customs procedure. <i>Only provided for backward compatibility. It will be treated like 'AFM' with SG31:TDT:8051 like '10'.</i>
AEW	Empty container bill number Reference number assigned to an empty container bill, see: 1001 = 708. Document of Transport. Only for empty containers.
AEX	Non-negotiable maritime transport document number Reference number assigned to a sea waybill, see: 1001 = 712. Document of Transport.
AFA	Through bill of lading number Reference number assigned to a through bill of lading, see: 1001 = 761. Document of Transport.
AFM	Secondary Customs reference Reference
AHI	Transport contract reference number Reference number of a transport contract. Reference.
AKR	General cargo consignment reference number Reference number identifying a particular general cargo (non-containerised or break bulk) consignment. Reference.
ANK	Reference number assigned by third party Reference number assigned by a third party.
	Reference. This qualifier is mainly used in the transshipment scenario in order to, at the moment of the loading, inform the previous document of transport under which the goods were unloaded.
AUE	Travel service Reference identifying a travel service. Reference.
AUG	Importer's letter of credit reference Letter of credit reference issued by importer. Reference.
BM	Bill of lading number Reference number assigned to a bill of lading, see: 1001 = 705. Document of Transport.
BN	Booking reference number [1016] Reference number assigned by the carrier or his agent when cargo space is reserved prior to loading. Reference. Refer to the segment notes.
CN	Carrier's reference number Reference number assigned by carrier to a consignment.
	Use this qualifier when the document of transport resulted from an unfolding (desdoblamiento) process, to identify the document of transport that was unfolded (desdoblado).
CR	Customer reference number Reference number assigned by the customer to a transaction. Reference.



# Common Platform - Manifest Message Format - Version 1.5e

	CU	Consignor's reference number [1140] Reference number assigned by a consignor to a particular shipment for his own purposes or for those of the consignee. Reference.
	MB	Master bill of lading number Reference number assigned to a master bill of lading, see: 1001 = 704. Document of Transport.
	PK	Packing list number (1014) Reference number assigned to a packing list, see: 1001 = 271. Document of Transport.
	UCN	Unique consignment reference number (1202) Unique reference of a consignment (UCRN) used for identification purposes in documents and messages exchanged between parties in international trade. See also: Unique Identifier Code (UNIC) in UN/ECE Recommendation No. 8, March 1992. Reference.
1154	Reference number	C an..35 R
	Identification number the nature and function of which can be qualified by an entry in data element 1153 Reference qualifier.	
1156	Line number	C an..6 X
4000	Reference version number	C an..35 X

**Segment:** **DTM** Date/Time/Period  
**Position:** 1140  
**Group:** SG19-SG26  
**Level:** 3  
**Usage:** Conditional (Required)  
**Max Use:** 1  
**Purpose:** A segment to indicate date and time relating to the reference.

**Dependency Notes:****Semantic Notes:****Comments:****Notes:**

The complete meaning of this date depends of the type of reference in the previous RFF segment, stated in RFF:C506:1153 data element.

Example: Date of the reference: "2003/10/08 - 10:15"

DTM+171:200310081015:203'

Example: Date of the reference: "2003/10/08 - 15:25 UTC+3". Attention that in this case the defined escape character must be used in the date/time format, if the time zone is positive in relation to GMT. If the escape character is '?' then

DTM+171:200310081525?+03:303'

**Data Element Summary**

<b>Data Element</b>	<b>Component Element</b>	<b>Name</b>	<b>Base Attributes</b>	<b>User Attributes</b>
<b>C507</b>		<b>DATE/TIME/PERIOD</b>	<b>M</b>	<b>M</b>
		Date and/or time, or period relevant to the specified date/time/period type.		
	<b>2005</b>	<b>Date/time/period qualifier</b>	<b>M an..3</b>	<b>M</b>
		Code giving specific meaning to a date, time or period.		
		171 Reference date/time		
		Date/time on which the reference was issued.		
	<b>2380</b>	<b>Date/time/period</b>	<b>C an..35</b>	<b>R</b>
		The value of a date, a date and time, a time or of a period in a specified representation.		
		According with UN/ECE Recommendation N°7.		
	<b>2379</b>	<b>Date/time/period format qualifier</b>	<b>C an..3</b>	<b>R</b>
		Specification of the representation of a date, a date and time or of a period.		
		203 CCYYMMDDHHMM		
		Calendar date including time with minutes: C=Century; Y=Year; M=Month; D=Day; H=Hour; M=Minutes.		
		303 CCYYMMDDHHMMZZZ		
		See 203 plus Z=Time zone.		

**Group:** **TDT** **Segment Group 31: Details of Transport**  
**Position:** 1400  
**Group:** Segment Group 19 (Consignment Information) Conditional (Dependent)  
**Level:** 2  
**Usage:** Conditional (Required)  
**Max Use:** 2  
**Purpose:** A group of segments to indicate details of the movement of goods such as mode and means of transport, locations, departure, and arrival date(s) and time(s).  
**Notes:** This group can be used to refer the previous and/or next leg of transport.

Segment Summary						
	<b>Pos.</b>	<b>Seg.</b>		<b>Req.</b>	<b>Max.</b>	<b>Group:</b>
	<b>No.</b>	<b>ID</b>	<b>Name</b>	<b>Des.</b>	<b>Use</b>	<b>Repeat</b>
M	1410	TDT	Details of Transport	M		1

**Segment:** **TDT** Details of Transport  
**Position:** 1410 (Trigger Segment)  
**Group:** SG19-SG31  
**Level:** 2  
**Usage:** Mandatory  
**Max Use:** 1  
**Purpose:** A segment to indicate information related to a certain stage of the transport, such as mode, means and carrier.

**Dependency Notes:****Semantic Notes:****Comments:****Notes:**

Example: Previous transport by sea.

TDT+10++1'

**Data Element Summary**

<u>Data Element</u>	<u>Component Element</u>	<u>Name</u>	<u>Base Attributes</u>	<u>User Attributes</u>
<b>8051</b>		<b>TRANSPORT STAGE QUALIFIER</b>	<b>M an..3</b>	<b>M</b>
		Qualifier giving a specific meaning to the transport details.		
	10	Pre-carriage transport		
		Transport by which the goods are moved prior to their main carriage transport.		
	30	On-carriage transport		
		Transport by which the goods are moved after the main carriage transport.		
<b>8028</b>		<b>CONVEYANCE REFERENCE NUMBER</b>	<b>C an..17</b>	<b>X</b>
<b>C220</b>		<b>MODE OF TRANSPORT</b>	<b>C</b>	<b>R</b>
		Method of transport code or name. Code preferred.		
	<b>8067</b>	<b>Mode of transport, coded</b>	<b>C an..3</b>	<b>R</b>
		Coded method of transport used for the carriage of the goods.		
		UN/ECE Recommendation 19 (2nd edition) - Codes for Modes of Transport (Doc. Ref. TRADE/CEFACT/2001/19).		
	0	Transport mode not specified		
		Transport mode has not been specified.		
		Notes:		
		1) This code can be used when the mode is not known or when information on it is not available at the time of issuing the document concerned.		
		This mode can only be used when the information provided is provisional at a very early stage of the transport service. If used, it must be corrected later on.		
	1	Maritime		
		Transport of goods and/or persons by sea.		
		If this mode is provided at this point of the message structure, it denotes a transshipment situation.		
	2	Rail		
		Transport of goods and/or persons is by rail.		
	3	Road		
		Transport of goods and/or persons is by road.		
	4	Air transport		
		Transport of goods and/or persons is by air.		
	5	Mail		
		Method to convey goods is by mail.		
		Notes:		
		1) This code is provided for practical reasons, despite the fact that mail is not genuine mode of transport. In many countries, the value of merchandise exported and imported by mail is considerable, but the exporter or importer concerned would be unable to state by which mode postal items had been conveyed.		

	7	Fixed transport installation			
		Transport of item is via a fixed transport installation.			
		Notes:			
		1) This code applies to installations for continuous transport such as pipelines, ropeways and electric power lines.			
	8	Inland water transport			
		Transport of goods and/or persons is by inland water.			
	ZZ1				
		<i>Only provided for backward compatibility. It will be treated like '1'.</i>			
	ZZ2				
		<i>Only provided for backward compatibility. It will be treated like '3'.</i>			
	ZZ3				
		<i>Only provided for backward compatibility. It will be treated like '1'.</i>			
	ZZ5				
		<i>Only provided for backward compatibility. It will be treated like '2'.</i>			
	ZZ6				
		<i>Only provided for backward compatibility. It will be treated like '0'.</i>			
C228	8066	<b>Mode of transport</b>	C	an..17	X
		<b>TRANSPORT MEANS</b>	C		X
		Code and/or name identifying the type of means of transport.			
C040	8179	<b>Type of means of transport identification</b>	C	an..8	X
		Code defining the type of the means of transport being utilized.			
	8178	<b>Type of means of transport</b>	C	an..17	X
		Description of the type of the means of transport being utilized.			
		<b>CARRIER</b>	C		X
		Identification of a carrier by code and/or by name. Code preferred.			
	3127	<b>Carrier identification</b>	C	an..17	X
		Identification of party undertaking or arranging transport of goods between named points.			
	1131	<b>Code list qualifier</b>	C	an..3	X
		Identification of a code list.			
8101 C401	3055	<b>Code list responsible agency, coded</b>	C	an..3	X
		Code identifying the agency responsible for a code list.			
	3128	<b>Carrier name</b>	C	an..35	X
		Name of party undertaking or arranging transport of goods between named points.			
		<b>TRANSIT DIRECTION, CODED</b>	C	an..3	X
		<b>EXCESS TRANSPORTATION INFORMATION</b>	C		X
		To provide details of reason for, and responsibility for, use of transportation other than normally utilized.			
	8457	<b>Excess transportation reason, coded</b>	M	an..3	X
		Indication of reason for excess transportation.			
	8459	<b>Excess transportation responsibility, coded</b>	M	an..3	X
C222		Indication of responsibility for excess transportation.			
	7130	<b>Customer authorization number</b>	C	an..17	X
		Customer provided authorization number to allow supplier to ship goods under specific freight conditions. This number will be transmitted back to customer in the dispatch advice message.			
		<b>TRANSPORT IDENTIFICATION</b>	C		X
		Code and/or name identifying the means of transport.			
	8213	<b>Id. of means of transport identification</b>	C	an..9	X
		Identification of the means of transport by name or number.			
	1131	<b>Code list qualifier</b>	C	an..3	X
		Identification of a code list.			
	3055	<b>Code list responsible agency, coded</b>	C	an..3	X
		Code identifying the agency responsible for a code list.			
	8212	<b>Id. of the means of transport</b>	C	an..35	X

Common Platform - Manifest Message Format - Version 1.5e

Identification of the means of transport by name or number.

<b>8453</b>	<b>Nationality of means of transport, coded</b>	<b>C</b>	<b>an..3</b>	<b>X</b>
Coded name of the country in which a means of transport is registered.				
<b>8281</b>	<b>TRANSPORT OWNERSHIP, CODED</b>	<b>C</b>	<b>an..3</b>	<b>X</b>

<b>Group:</b>	<b>NAD</b> Segment Group 34: Name and Address
<b>Position:</b>	1500
<b>Group:</b>	Segment Group 19 (Consignment Information) Conditional (Dependent)
<b>Level:</b>	2
<b>Usage:</b>	Conditional (Required)
<b>Max Use:</b>	9
<b>Purpose:</b>	A group of segments to identify a party, related references, locations contacts, required documents, and charges to be paid by the party.
<b>Notes:</b>	This group is to refer the several entities related with this transport contract.

The entities included are the ones generally included in the aligned documents according to UN/ECE Recommendation 1. But it was identified the need to specify some of these entities in segment group 42. So, in order to maintain the compatibility between the business documents and this need, these entities can be referred at CNI level and/or at GID level. The following rules apply:

- If they are omitted at CNI level, then the ones referred at GID level will be considered provided that all occurrences of GID group will have these entities, otherwise an error will occur.
- If they are present at CNI level and omitted at GID level, then the ones at CNI level will be applied to GID level during the integration process.
- If they are present at CNI level and present in some (not all) occurrences of GID group, then the ones at CNI level will be applied to the occurrences of the GID group that had no entities associated.
- If they are present at CNI level and in all occurrences of GID group, then the information will be processed as is.

At least this group must be used to identify the agent that is presenting the cargo to Customs (DE3035='AG') and the Carrier (DE3035='CA').

This group is also used to state the Customs Office that endorses the exit from the Customs territory. Use code 'CM' in DE3035 for this purpose.

Another usage is to identify that an another entity will provide detailed information about the document of transport. This scenario occurs when the document of transport needs to be unfolded (desdoblado). This entity is designated as Nominated Freight Company for this purpose and use code 'FB' in DE3035.

#### Segment Summary

	<b>Pos.</b>	<b>Seg.</b>		<b>Req.</b>	<b>Max.</b>	<b>Group:</b>
	<b>No.</b>	<b>ID</b>	<b>Name</b>	<b>Des.</b>	<b>Use</b>	<b>Repeat</b>
M	1510	NAD	Name and Address	M	1	

<b>Segment:</b>	<b>NAD</b> Name and Address
<b>Position:</b>	1510 (Trigger Segment)
<b>Group:</b>	SG19-SG34
<b>Level:</b>	2
<b>Usage:</b>	Mandatory
<b>Max Use:</b>	1
<b>Purpose:</b>	A segment to identify the party's name, address, and function.
<b>Dependency Notes:</b>	
<b>Semantic Notes:</b>	
<b>Comments:</b>	
<b>Notes:</b>	<p>For all entities the composite C058 and elements 3251 and 3207 must be used.</p> <p>Additionally for nationals send the tax payer number in C082:3039.</p> <p>Additionally whenever NAD:3035 in {'CA','FB'} then do not use DE:3055 and the identification placed in DE:3039 must be preceded by the ISO country code (2 digit) corresponding to the nationality of the carrier or the nominated freight company. In DE:1131 use the appropriate code that correctly identifies the type of number given to the Portuguese Customs at the moment of the protocol signature.</p> <p>When identifying a Customs Office use code '113' in DE:1131 and code '155' in DE:3055.</p> <p>When identifying a Portuguese entity use code '167' in DE:1131 and code '155' in DE:3055.</p> <p>The usage of qualifiers 'AG' and 'CA' is required.</p> <p>Example: Agent of Cargo, tax payer id 510042365789.</p> <p>NAD+AG+510042365789:167:155'</p>

## Data Element Summary

<u>Data Element</u>	<u>Component Element</u>	<u>Name</u>	<u>Base Attributes</u>	<u>User Attributes</u>
3035		<b>PARTY QUALIFIER</b>	<b>M an..3</b>	<b>M</b>
		Code giving specific meaning to a party.		
	AG	Agent/representative		
		(3196) Party authorized to act on behalf of another party.		
		Consider this entity as the Cargo Agent.		
	CA	Carrier		
		(3126) Party undertaking or arranging transport of goods between named points.		
	CM	Customs		
		Identification of customs authority relevant to the transaction or shipment.		
		This qualifier is used to identify the Customs Office that endorses the exit of the goods from Customs territory.		
	CN	Consignee		
		(3132) Party to which goods are consigned.		
		All details about the consignee are classified as sensitive information.		
	CZ	Consignor		
		(3336) Party which, by contract with a carrier, consigns or sends goods with the carrier, or has them conveyed by him. Synonym: shipper, sender.		
		All details about the consignor are classified as sensitive information.		
	FB	Nominated freight company		
		Party nominated to act as transport company or carrier for the goods.		
		The entity associated with this qualifier will unfold (desdobrar) this document of transport in an independent message, providing further detailed information regarding the cargo, entities and locations.		
	N1	Notify party no. 1		
		All details about the notify party are classified as sensitive information.		



	N2	Notify party no. 2	All details about the notify party are classified as sensitive information.		
	NI	Notify party	(3180) Party to be notified of arrival of goods.		
			All details about the notify party are classified as sensitive information.		
	OS	Original shipper	The original supplier of the goods.		
			All details about the original shipper are classified as sensitive information.		
<b>C082</b>	<b>PARTY IDENTIFICATION DETAILS</b>		<b>C</b>		<b>D</b>
	Identification of a transaction party by code.				
	This composite element is required when the entity is Portuguese or is a Carrier or is Nominated Freight Company.				
	<b>3039</b>	<b>Party id. identification</b>	<b>M</b>	<b>an..35</b>	<b>M</b>
		Code identifying a party involved in a transaction.			
		If NAD:3035 in {'CA', 'FB'} then place the number given to the Portuguese Customs at the moment of the protocol signature preceded by the ISO country code (2 digit) corresponding to the nationality of the carrier or the nominated freight company.			
		Send the tax payer number for Portuguese entities.			
	<b>1131</b>	<b>Code list qualifier</b>	<b>C</b>	<b>an..3</b>	<b>R</b>
		Identification of a code list.			
	52	Value added tax identification	Value added tax identification code.		
			Use when the entity identified in DE:3039 is not Portuguese.		
			Portuguese Customs code VIES.		
	53	Passport number	Number assigned to a passport.		
			Portuguese Customs code P.		
	113	Customs office	Customs administrative unit competent for the performance of Customs formalities, and the premises or other areas approved for the purpose by the competent authorities (CCC).		
			Use when the code in DE:3039 identifies a Customs Office, independent of its nationality.		
	167	Tax party identification	Code assigned by a tax authority to identify a party.		
			To use when the entity is Portuguese. Portuguese Customs code NIF.		
	174	Citizen identification	Portuguese Customs code BI.		
	Z02				
	Z03				
	<b>3055</b>	<b>Code list responsible agency, coded</b>	<b>C</b>	<b>an..3</b>	<b>D</b>
		Code identifying the agency responsible for a code list.			
		If the entity is a Carrier (DE:3055 = 'CA') or a Nominated freight company (DE:3055 = 'FB'), then this element shall not be sent.			
	155	PT, Portuguese Customs			
<b>C058</b>	<b>NAME AND ADDRESS</b>		<b>C</b>		<b>R</b>
	Unstructured name and address: one to five lines.				
	<b>3124</b>	<b>Name and address line</b>	<b>M</b>	<b>an..35</b>	<b>M</b>
		Free form name and address description.			
		Name of the entity.			
		Exception. If DE:3035='CM' then provide the name of the Customs Office that endorses the exit of the goods from the EU territory.			
	<b>3124</b>	<b>Name and address line</b>	<b>C</b>	<b>an..35</b>	<b>O</b>
		Free form name and address description.			
		Name of the entity.			

C080	3124	<b>Name and address line</b>	C	an..35	R
		Free form name and address description.			
		Address of the entity.			
	3124	<b>Name and address line</b>	C	an..35	O
		Free form name and address description.			
		Address of the entity.			
	3124	<b>Name and address line</b>	C	an..35	O
		Free form name and address description.			
		Place other than a city.			
		<b>PARTY NAME</b>	C		X
C059		Identification of a transaction party by name, one to five lines. Party name may be formatted.			
	3036	<b>Party name</b>	M	an..35	X
		Name of a party involved in a transaction.			
	3036	<b>Party name</b>	C	an..35	X
		Name of a party involved in a transaction.			
	3036	<b>Party name</b>	C	an..35	X
		Name of a party involved in a transaction.			
	3036	<b>Party name</b>	C	an..35	X
		Name of a party involved in a transaction.			
	3036	<b>Party name</b>	C	an..35	X
C059		Name of a party involved in a transaction.			
	3045	<b>Party name format, coded</b>	C	an..3	X
		Specification of the representation of a party name.			
		<b>STREET</b>	C		X
		Street address and/or PO Box number in a structured address: one to three lines.			
	3042	<b>Street and number/p.o. box</b>	M	an..35	X
		Street and number in plain language, or Post Office Box No.			
	3042	<b>Street and number/p.o. box</b>	C	an..35	X
		Street and number in plain language, or Post Office Box No.			
	3042	<b>Street and number/p.o. box</b>	C	an..35	X
C059		Street and number in plain language, or Post Office Box No.			
	3042	<b>Street and number/p.o. box</b>	C	an..35	X
		Street and number in plain language, or Post Office Box No.			
	3042	<b>Street and number/p.o. box</b>	C	an..35	X
		Street and number in plain language, or Post Office Box No.			
	3164	<b>CITY NAME</b>	C	an..35	R
		Name of a city (a town, a village) for addressing purposes.			
	3229	<b>COUNTRY SUB-ENTITY IDENTIFICATION</b>	C	an..9	O
		Identification of the name of sub-entities (state, province) defined by appropriate governmental agencies.			
		ISO 3166-2 with 1-3 characters country subdivision codes.			
C059	3251	<b>POSTCODE IDENTIFICATION</b>	C	an..9	D
		Code defining postal zones or addresses.			
		This data element is advised when the country has postal coding system.			
		It is required for Portugal.			
	3207	<b>COUNTRY, CODED</b>	C	an..3	R
		Identification of the name of a country or other geographical entity as specified in ISO 3166.			
		ISO 3166 2-letter country codes.			

**Group:** **GID** **Segment Group 41: Goods Item Details**  
**Position:** 1820  
**Group:** Segment Group 19 (Consignment Information) Conditional (Dependent)  
**Level:** 2  
**Usage:** Conditional (Dependent)  
**Max Use:** 999  
**Purpose:** A group of segments to describe the goods items for which transport is undertaken.  
**Notes:** This is a conditional group and can be repeated 999 times. Each instance describes a cargo departure, goods, passengers, etc.

For the Port of Leixões and the Port of Sines, and if the transport document refers only to empty transport equipment then this group and all its included segments is not needed.

For the Port of Lisbon this group is needed in all situations. In the case of empty transport equipment, there must be one occurrence for each type of containers according with the codes presented in segment GDS.

#### Segment Summary

	<u>Pos.</u>	<u>Seg.</u>	<u>Name</u>	<u>Req.</u>	<u>Max.</u>	<u>Group:</u>
	<u>No.</u>	<u>ID</u>		<u>Des.</u>	<u>Use</u>	<u>Repeat</u>
M	1830	GID	Goods Item Details	M	1	
R	1880	LOC	Place/Location Identification	C	3	
O	1890	MOA	Monetary Amount	C	1	
R	1900	PIA	Additional Product Id	C	1	
R	1920	FTX	Free Text	C	5	
	1930		Segment Group 42: Name and Address	C	9	
R	1960	GDS	Nature of Cargo	C	1	
	1970		Segment Group 43: Measurements	C	2	
	2030		Segment Group 45: Reference	C	9	
	2060		Segment Group 46: Package Identification	C	999	
	2140		Segment Group 48: Governmental Requirements	C	9	
	2280		Segment Group 52: Split Goods Placement	C	999	

**Segment:** **GID** Goods Item Details  
**Position:** 1830 (Trigger Segment)  
**Group:** SG19-SG41  
**Level:** 2  
**Usage:** Mandatory  
**Max Use:** 1  
**Purpose:** A segment to identify a goods item for which transport is undertaken. A goods item can be identified by up to three levels of packaging.

**Dependency Notes:****Semantic Notes:****Comments:****Notes:**

Example: 20 Boxes of carton, being the third goods in the consignment.

GID+3+20:CT:67:6'

**Data Element Summary**

<u>Data Element</u>	<u>Component Element</u>	<u>Name</u>	<u>Base Attributes</u>	<u>User Attributes</u>
1496		<b>GOODS ITEM NUMBER</b> Serial number differentiating each separate goods item entry of a consignment as contained in one document/declaration. Must be unique in each consignment.	<b>C n..5</b>	<b>R</b>
C213		<b>NUMBER AND TYPE OF PACKAGES</b> Number and type of individual parts of a shipment. This composite is not needed when the case of empty transport equipment.	<b>C</b>	<b>D</b>
	7224	<b>Number of packages</b> Number of individual parts of a shipment either unpacked, or packed in such a way that they cannot be divided without first undoing the packing. Note that for break-bulk it must be declared 1 volume.	<b>C n..8</b>	<b>R</b>
	7065	<b>Type of packages identification</b> Coded description of the form in which goods are presented. UN/ECE Recommendation 21 - Codes for Types of Cargo, Packages and Packaging Materials Revision 4 to Annex V and Annex VI (Doc. Ref. TRADE/CEFACT/2002/). Only for the Port of Lisbon, in the presence of empty containers this element must have code NE.	<b>C an..17</b>	<b>R</b>
	1131	<b>Code list qualifier</b> Identification of a code list. 67 Type of package Indication of the type of package codes.	<b>C an..3</b>	<b>R</b>
	3055	<b>Code list responsible agency, coded</b> Code identifying the agency responsible for a code list. 6 UN/ECE (United Nations - Economic Commission for Europe)	<b>C an..3</b>	<b>R</b>
	7064	<b>Type of packages</b> Description of the form in which goods are presented. Annex II - Eurostat Directive. Do not use codes Directive 10,20,30,50,60 and 90 as they are Classification Groups. Only provided for backward compatibility. Information will be treated like the segment GDS in this group.	<b>C an..35</b>	<b>O</b>
	7233	<b>Packaging related information, coded</b>	<b>C an..3</b>	<b>X</b>
		<b>NUMBER AND TYPE OF PACKAGES</b> Number and type of individual parts of a shipment.	<b>C</b>	<b>X</b>
	7224	<b>Number of packages</b> Number of individual parts of a shipment either unpacked, or packed in such a way that they cannot be divided without first undoing the packing.	<b>C n..8</b>	<b>X</b>
	7065	<b>Type of packages identification</b> Coded description of the form in which goods are presented.	<b>C an..17</b>	<b>X</b>
	1131	<b>Code list qualifier</b>	<b>C an..3</b>	<b>X</b>

Common Platform - Manifest Message Format - Version 1.5e

Identification of a code list.				
C213	3055	<b>Code list responsible agency, coded</b>	C an..3	X
	Code identifying the agency responsible for a code list.			
	7064	<b>Type of packages</b>	C an..35	X
	Description of the form in which goods are presented.			
	7233	<b>Packaging related information, coded</b>	C an..3	X
	Code giving packaging, handling and marking related information.			
	<b>NUMBER AND TYPE OF PACKAGES</b>			
	Number and type of individual parts of a shipment.			
	7224	<b>Number of packages</b>	C n..8	X
	Number of individual parts of a shipment either unpacked, or packed in such a way that they cannot be divided without first undoing the packing.			
C213	7065	<b>Type of packages identification</b>	C an..17	X
	Coded description of the form in which goods are presented.			
	1131	<b>Code list qualifier</b>	C an..3	X
	Identification of a code list.			
	3055	<b>Code list responsible agency, coded</b>	C an..3	X
	Code identifying the agency responsible for a code list.			
	7064	<b>Type of packages</b>	C an..35	X
	Description of the form in which goods are presented.			
	7233	<b>Packaging related information, coded</b>	C an..3	X
	Code giving packaging, handling and marking related information.			
C213	<b>NUMBER AND TYPE OF PACKAGES</b>			
	Number and type of individual parts of a shipment.			
	7224	<b>Number of packages</b>	C n..8	X
	Number of individual parts of a shipment either unpacked, or packed in such a way that they cannot be divided without first undoing the packing.			
	7065	<b>Type of packages identification</b>	C an..17	X
	Coded description of the form in which goods are presented.			
	1131	<b>Code list qualifier</b>	C an..3	X
	Identification of a code list.			
	3055	<b>Code list responsible agency, coded</b>	C an..3	X
	Code identifying the agency responsible for a code list.			
C213	7064	<b>Type of packages</b>	C an..35	X
	Description of the form in which goods are presented.			
	7233	<b>Packaging related information, coded</b>	C an..3	X
	Code giving packaging, handling and marking related information.			
	<b>NUMBER AND TYPE OF PACKAGES</b>			
	Number and type of individual parts of a shipment.			
	7224	<b>Number of packages</b>	C n..8	X
	Number of individual parts of a shipment either unpacked, or packed in such a way that they cannot be divided without first undoing the packing.			
	7065	<b>Type of packages identification</b>	C an..17	X
	Coded description of the form in which goods are presented.			
C213	1131	<b>Code list qualifier</b>	C an..3	X
	Identification of a code list.			
	3055	<b>Code list responsible agency, coded</b>	C an..3	X
	Code identifying the agency responsible for a code list.			
	7064	<b>Type of packages</b>	C an..35	X
	Description of the form in which goods are presented.			
	7233	<b>Packaging related information, coded</b>	C an..3	X
	Code giving packaging, handling and marking related information.			
	<b>NUMBER AND TYPE OF PACKAGES</b>			
	Number and type of individual parts of a shipment.			
C213	7224	<b>Number of packages</b>	C n..8	X
	Number of individual parts of a shipment either unpacked, or packed in such a way that they cannot be divided without first undoing the packing.			
	7065	<b>Type of packages identification</b>	C an..17	X
	Coded description of the form in which goods are presented.			
	1131	<b>Code list qualifier</b>	C an..3	X
	Identification of a code list.			
	3055	<b>Code list responsible agency, coded</b>	C an..3	X
	Code identifying the agency responsible for a code list.			
	7064	<b>Type of packages</b>	C an..35	X
	Description of the form in which goods are presented.			
C213	7233	<b>Packaging related information, coded</b>	C an..3	X
	Code giving packaging, handling and marking related information.			
	<b>NUMBER AND TYPE OF PACKAGES</b>			
	Number and type of individual parts of a shipment.			
	7224	<b>Number of packages</b>	C n..8	X
	Number of individual parts of a shipment either unpacked, or packed in such a way that they cannot be divided without first undoing the packing.			
	7065	<b>Type of packages identification</b>	C an..17	X
	Coded description of the form in which goods are presented.			
	1131	<b>Code list qualifier</b>	C an..3	X
	Identification of a code list.			
C213	3055	<b>Code list responsible agency, coded</b>	C an..3	X
	Code identifying the agency responsible for a code list.			
	7064	<b>Type of packages</b>	C an..35	X
	Description of the form in which goods are presented.			
	7233	<b>Packaging related information, coded</b>	C an..3	X
	Code giving packaging, handling and marking related information.			
	<b>NUMBER AND TYPE OF PACKAGES</b>			
	Number and type of individual parts of a shipment.			
	7224	<b>Number of packages</b>	C n..8	X
	Number of individual parts of a shipment either unpacked, or packed in such a way that they cannot be divided without first undoing the packing.			
C213	7065	<b>Type of packages identification</b>	C an..17	X
	Coded description of the form in which goods are presented.			
	1131	<b>Code list qualifier</b>	C an..3	X
	Identification of a code list.			
	3055	<b>Code list responsible agency, coded</b>	C an..3	X
	Code identifying the agency responsible for a code list.			
	7064	<b>Type of packages</b>	C an..35	X
	Description of the form in which goods are presented.			
	7233	<b>Packaging related information, coded</b>	C an..3	X
	Code giving packaging, handling and marking related information.			

**Segment:** **LOC** Place/Location Identification  
**Position:** 1880  
**Group:** SG19-SG41  
**Level:** 3  
**Usage:** Conditional (Required)  
**Max Use:** 3  
**Purpose:** A segment to specify a country associated with a goods item, such as country of origin, or country of destination.

**Dependency Notes:****Semantic Notes:****Comments:****Notes:**

This segment has three required usages.

One is to state the first port of loading of goods into a vessel. For this case, use 3227='76'.

Another is to state the last port of discharge of goods from a vessel. For this case, use 3227='170'.

The other is to state the intended terminal/berth/location where the goods are expected to be loaded/discharged to/from the vessel, except if it is a transit manifest (SG2:GOR:DE8323='3'). In this last situation this usage does not apply. This information is provisional. It will be confirmed and updated by the Port Authorities to Customs and other participating entities, using the Means of Transport Process (PMT) as a result of fine tune planning, maneuver's scheduling and occurred events, specially after the mooring of the vessel.

Example: Cargo movement from/to the vessel at berth 007 in the Port of Lisbon

LOC+164+PTLIS:139:6+007'

Example: Original port of loading Shanghai

LOC+76+CNSHA:139:6'

**Data Element Summary**

<u>Data Element</u>	<u>Component Element</u>	<u>Name</u>	<u>Base Attributes</u>	<u>User Attributes</u>
3227		<b>PLACE/LOCATION QUALIFIER</b>	<b>M an..3</b>	<b>M</b>
		Code identifying the function of a location.		
		76 Original port of loading		
		The port where the goods were first loaded on a vessel.		
		164 Berth		
		Place or location in a port where a vessel is moored.		
		170 Final port of discharge		
		Last port at which cargo is unloaded from a vessel before the cargo is moved to a place of delivery or destination.		
<b>C517</b>		<b>LOCATION IDENTIFICATION</b>	<b>C</b>	<b>R</b>
		Identification of a location by code or name.		
	<b>3225</b>	<b>Place/location identification</b>	<b>C an..25</b>	<b>R</b>
		Identification of the name of place/location, other than 3164 City name.		
		If 3227 is '164' then put the port id where the berth stated in 3223 is located.		
	<b>1131</b>	<b>Code list qualifier</b>	<b>C an..3</b>	<b>R</b>
		Identification of a code list.		
		139 Port		
		A location having facilities for means of transport to load or discharge cargo.		
	<b>3055</b>	<b>Code list responsible agency, coded</b>	<b>C an..3</b>	<b>R</b>
		Code identifying the agency responsible for a code list.		
		6 UN/ECE (United Nations - Economic Commission for Europe)		
	<b>3224</b>	<b>Place/location</b>	<b>C an..70</b>	<b>X</b>
<b>C519</b>		<b>RELATED LOCATION ONE IDENTIFICATION</b>	<b>C</b>	<b>D</b>
		Identification the first related location by code or name.		

Use if DE:3227 is '164'.				
C553	3223	<b>Related place/location one identification</b>	C	an..25 R
		Specification of the first related place/location by code.		
		List to be provided by the Port Authority receiver of the message.		
	1131	<b>Code list qualifier</b>	C	an..3 X
	3055	<b>Code list responsible agency, coded</b>	C	an..3 X
	3222	<b>Related place/location one</b>	C	an..70 X
		<b>RELATED LOCATION TWO IDENTIFICATION</b>	C	X
		Identification of second related location by code or name.		
	3233	<b>Related place/location two identification</b>	C	an..25 X
		Specification of a second related place/location by code.		
5479	1131	<b>Code list qualifier</b>	C	an..3 X
		Identification of a code list.		
	3055	<b>Code list responsible agency, coded</b>	C	an..3 X
		Code identifying the agency responsible for a code list.		
	3232	<b>Related place/location two</b>	C	an..70 X
		Specification of a second related place/location by name.		
		<b>RELATION, CODED</b>	C	an..3 X

**Segment:** **MOA** Monetary Amount  
**Position:** 1890  
**Group:** SG19-SG41  
**Level:** 3  
**Usage:** Conditional (Optional)  
**Max Use:** 1  
**Purpose:** A segment to specify a monetary amount associated with a goods item, such as declared value, FOB value, etc.

**Dependency Notes:****Semantic Notes:****Comments:****Notes:**

Example: Total amount € 5.587,00.

MOA+39:558700:EUR'

**Data Element Summary**

<u>Data Element</u>	<u>Component Element</u>	<u>Name</u>	<u>Base Attributes</u>	<u>User Attributes</u>
<b>C516</b>		<b>MONETARY AMOUNT</b>	<b>M</b>	<b>M</b>
		Amount of goods or services stated as a monetary amount in a specified currency.		
	<b>5025</b>	<b>Monetary amount type qualifier</b>	<b>M an..3</b>	<b>M</b>
		Indication of type of amount.		
		39 Invoice total amount		
		[5444] Total sum charged in respect of one or more Invoices in accordance with the terms of delivery.		
	<b>5004</b>	<b>Monetary amount</b>	<b>C n..18</b>	<b>O</b>
		Number of monetary units.		
	<b>6345</b>	<b>Currency, coded</b>	<b>C an..3</b>	<b>O</b>
		Identification of the name or symbol of the monetary unit involved in the transaction.		
		EUR Euro		
	<b>6343</b>	<b>Currency qualifier</b>	<b>C an..3</b>	<b>X</b>
	<b>4405</b>	<b>Status, coded</b>	<b>C an..3</b>	<b>X</b>



**Segment:** **PIA** Additional Product Id  
**Position:** 1900  
**Group:** SG19-SG41  
**Level:** 3  
**Usage:** Conditional (Required)  
**Max Use:** 1  
**Purpose:** A segment to specify article numbers.  
**Dependency Notes:**  
**Semantic Notes:**  
**Comments:**  
**Notes:**

This segment is required except for transit manifest. In this case use the 8 digit format with 4 significant digits (means that at least the first 4 must be given and the others will be zero).

The usage of 14 digits in the HS code is advised since in the future some customs procedures may be simplified if this information is provided.

If the consignment is related with empty containers, two situations may apply.

1. The containers are being considered just equipment being moved for positioning purposes, then element 7140 must have the value "8609000000" and the type of document in group 26:RFF:1153='AEW'. This applies to the Port of Lisbon and Port of Sines only.

2. The containers were object of a commercial transaction (example, they were sold by a container maker). In this case they are considered to be goods items. Then element 7140 must have values "8609000000" and in GDS:7085 must have a value in ('31','32','33','34').

If the manifest type is transit (SG2:GOR:DE8323='3') then this segment is optional for all port authorities.

Note that these data are not binding for Customs' purposes.

Example: HS 63.02, Towels

PIA+5+63020000:HS'

Data Element Summary				
Data Element	Component Element	Name	Base Attributes	User Attributes
4347		<b>PRODUCT ID. FUNCTION QUALIFIER</b>	<b>M an..3</b>	<b>M</b>
		Indication of the function of the product code.		
		5 Product identification		
C212		<b>ITEM NUMBER IDENTIFICATION</b>	<b>M</b>	<b>M</b>
		Goods identification for a specified source.		
	7140	<b>Item number</b>	<b>C an..35</b>	<b>R</b>
		A number allocated to a group or item.		
		Harmonized system code: 4 digits minimum, 14 for non-EU goods.		
	7143	<b>Item number type, coded</b>	<b>C an..3</b>	<b>R</b>
		Identification of the type of item number.		
		HS Harmonised system		
	1131	<b>Code list qualifier</b>	<b>C an..3</b>	<b>X</b>
	3055	<b>Code list responsible agency, coded</b>	<b>C an..3</b>	<b>X</b>
C212		<b>ITEM NUMBER IDENTIFICATION</b>	<b>C</b>	<b>X</b>
		Goods identification for a specified source.		
	7140	<b>Item number</b>	<b>C an..35</b>	<b>X</b>
		A number allocated to a group or item.		
	7143	<b>Item number type, coded</b>	<b>C an..3</b>	<b>X</b>
		Identification of the type of item number.		
	1131	<b>Code list qualifier</b>	<b>C an..3</b>	<b>X</b>
		Identification of a code list.		
	3055	<b>Code list responsible agency, coded</b>	<b>C an..3</b>	<b>X</b>

Common Platform - Manifest Message Format - Version 1.5e

		Code identifying the agency responsible for a code list.		
<b>C212</b>		<b>ITEM NUMBER IDENTIFICATION</b>	<b>C</b>	<b>X</b>
		Goods identification for a specified source.		
	<b>7140</b>	<b>Item number</b>	<b>C an..35</b>	<b>X</b>
		A number allocated to a group or item.		
	<b>7143</b>	<b>Item number type, coded</b>	<b>C an..3</b>	<b>X</b>
		Identification of the type of item number.		
	<b>1131</b>	<b>Code list qualifier</b>	<b>C an..3</b>	<b>X</b>
		Identification of a code list.		
	<b>3055</b>	<b>Code list responsible agency, coded</b>	<b>C an..3</b>	<b>X</b>
		Code identifying the agency responsible for a code list.		
<b>C212</b>		<b>ITEM NUMBER IDENTIFICATION</b>	<b>C</b>	<b>X</b>
		Goods identification for a specified source.		
	<b>7140</b>	<b>Item number</b>	<b>C an..35</b>	<b>X</b>
		A number allocated to a group or item.		
	<b>7143</b>	<b>Item number type, coded</b>	<b>C an..3</b>	<b>X</b>
		Identification of the type of item number.		
	<b>1131</b>	<b>Code list qualifier</b>	<b>C an..3</b>	<b>X</b>
		Identification of a code list.		
	<b>3055</b>	<b>Code list responsible agency, coded</b>	<b>C an..3</b>	<b>X</b>
		Code identifying the agency responsible for a code list.		
<b>C212</b>		<b>ITEM NUMBER IDENTIFICATION</b>	<b>C</b>	<b>X</b>
		Goods identification for a specified source.		
	<b>7140</b>	<b>Item number</b>	<b>C an..35</b>	<b>X</b>
		A number allocated to a group or item.		
	<b>7143</b>	<b>Item number type, coded</b>	<b>C an..3</b>	<b>X</b>
		Identification of the type of item number.		
	<b>1131</b>	<b>Code list qualifier</b>	<b>C an..3</b>	<b>X</b>
		Identification of a code list.		
	<b>3055</b>	<b>Code list responsible agency, coded</b>	<b>C an..3</b>	<b>X</b>
		Code identifying the agency responsible for a code list.		

**Segment:** **FTX** Free Text  
**Position:** 1920  
**Group:** SG19-SG41  
**Level:** 3  
**Usage:** Conditional (Required)  
**Max Use:** 5  
**Purpose:** A segment to specify processable supplementary information relating to the goods item.

**Dependency Notes:****Semantic Notes:****Comments:****Notes:**

Goods description must be sent (FTX:4451='AAA'). In this case, the goods description must be in portuguese and/or in english. So two occurrences of FTX with DE:4451 equal to 'AAA' may appear.

If the goods benefit from aid under the procedure of supplying the national islands, this fact can be stated in this segment (with FTX:4451='AAI'). In this case element 4440 in C108 shall have the expression "POSEIMA". This usage applies if it is a disembark manifest (SG2:GOR:8323=2) to deliver to a port at the Azores or Madeira archipelagos.

Everytime the goods in this segment group are declared in an export customs declaration, it must be stated if they are the total, just a part or the rest of what is referenced on that declaration. This fact is stated in this segment with 4451='CUS', and element C108:4440 shall be used for this purpose with code 'T' for total, 'P' for part and 'R' for rest. This information applies when this message is an export document (SG2:GOR:8323='1') and goods are being exported (according with customs definition) or goods in transhipment with an export MRN (Movement Reference Number).

It is necessary to segregate the situation when goods of the type vehicles carry other goods inside. Both the vehicle and other goods are considered as one item, so GID occurs only once. Vehicle must be declared according to their specific rules (see Notes of segment group 46), but additionally segment must be sent with code 'TRA' in DE:4451. The elements 4440 can be used to provide complementary information like which vehicle is carrying which goods or which quantities.

All these rules do not apply in the case of empty transport equipment.

Additionally, if in the presence of an empty transport equipment and it is to be consider as goods, then this segment must be sent with 4451='OSI' and first element of C108:4440 shall have the value 'G' with the meaning "Empty Equipment as goods".

Example: Goods description: PVC bags for packaging purpose, in english.

FTX+AAA+++PVC BAGS FOR PACKAGING PURPOSE+EN'

Example: Goods to supply the islands.

FTX+AAI+++POSEIMA'

**Data Element Summary**

<u>Data Element</u>	<u>Component Element</u>	<u>Name</u>	<u>Base Attributes</u>	<u>User Attributes</u>
4451		TEXT SUBJECT QUALIFIER	M an..3	M
		Code specifying subject of a free text.		
	AAA	Goods description		
		[7002] Plain language description of the nature of the goods sufficient to identify them at the level required for banking, Customs, statistical or transport purposes, avoiding unnecessary detail (Generic term). This code must be used at least once for Customs purposes.		
	AAI	General information		
		Use to inform if the goods benefit from special aid under the procedure of supply of the national islands.		
	CUS	Customs declaration information		
		Note contains customs declaration information.		
		This qualifier is to state if the goods item corresponds to the total, to a part or to the rest of the cargo declared in a certain customs		

		document.		
	OSI	Other service information		
		General information created by the sender of general or specific value.		
		This qualifier is to state if an empty equipment of transport is to be treated as goods item.		
	TRA	Transportation information		
		General information regarding the transport of the cargo.		
		Use this code when the declared vehicle are carrying other goods inside. The simple usage of the code is enough to state this scenario but it is advised to send complementary information in DE:4440.		
4453	<b>TEXT FUNCTION, CODED</b>		<b>C an..3</b>	<b>X</b>
C107	<b>TEXT REFERENCE</b>		<b>C</b>	<b>X</b>
		Coded reference to a standard text and its source.		
	4441 <b>Free text identification</b>		<b>M an..17</b>	<b>X</b>
		Free text in coded form.		
	1131 <b>Code list qualifier</b>		<b>C an..3</b>	<b>X</b>
		Identification of a code list.		
	3055 <b>Code list responsible agency, coded</b>		<b>C an..3</b>	<b>X</b>
		Code identifying the agency responsible for a code list.		
C108	<b>TEXT LITERAL</b>		<b>C</b>	<b>R</b>
		Free text; one to five lines.		
	4440 <b>Free text</b>		<b>M an..70</b>	<b>M</b>
		Free text field available to the message sender for information.		
		If element 4451 is 'AAI', state the condition defined for this code by placing the term "POSEIMA".		
		If element 4451 is 'CUS', then provide the information by using the codes 'T' for total, 'P' for part or 'R' for rest as appropriate.		
		If element 4451 is 'OSI', then provide the information by using the code 'G' for Empty Equipment as goods.		
	4440 <b>Free text</b>		<b>C an..70</b>	<b>O</b>
		Free text field available to the message sender for information.		
	4440 <b>Free text</b>		<b>C an..70</b>	<b>O</b>
		Free text field available to the message sender for information.		
	4440 <b>Free text</b>		<b>C an..70</b>	<b>O</b>
		Free text field available to the message sender for information.		
	4440 <b>Free text</b>		<b>C an..70</b>	<b>O</b>
		Free text field available to the message sender for information.		
3453	<b>LANGUAGE, CODED</b>		<b>C an..3</b>	<b>O</b>
		Code of language (ISO 639-1988).		
		According to ISO 639:1988 two-letter code.		
	EN	English		
	PT	Portuguese		

<b>Group:</b>	<b>NAD</b> Segment Group 42: Name and Address
<b>Position:</b>	1930
<b>Group:</b>	Segment Group 41 (Goods Item Details) Conditional (Dependent)
<b>Level:</b>	3
<b>Usage:</b>	Conditional (Required)
<b>Max Use:</b>	9
<b>Purpose:</b>	A group of segments to identify different places of collection and/or delivery for the goods item.
<b>Notes:</b>	<p>This group is to refer the several entities related with this transport contract and to entities related with a particular specific good.</p> <p>At least the following entities must be specified:</p> <ul style="list-style-type: none"> <li>- Consignor/Shipper (CZ). All details about the consignor are classified as sensitive information.</li> <li>- Consignee (CN). All details about the consignee are classified as sensitive information.</li> <li>- Terminal Operator (TR).</li> <li>- Warehouse Depositor (WD).</li> </ul> <p>Additionally to the above ones, in case of an export manifest (SG2:GOR:8323='1') the following entity must be specified:</p> <ul style="list-style-type: none"> <li>- Original Shipper (OS). All details about original shipper are classified as sensitive information.</li> </ul> <p>Refer to the notes of segment group 34 for additional issues about this group.</p>

## Segment Summary

	<b>Pos.</b>	<b>Seg.</b>		<b>Req.</b>	<b>Max.</b>	<b>Group:</b>
	<b>No.</b>	<b>ID</b>	<b>Name</b>	<b>Des.</b>	<b>Use</b>	<b>Repeat</b>
M	1940	NAD	Name and Address	M	1	

<b>Segment:</b>	<b>NAD</b> Name and Address
<b>Position:</b>	1940 (Trigger Segment)
<b>Group:</b>	SG19-SG41-SG42
<b>Level:</b>	3
<b>Usage:</b>	Mandatory
<b>Max Use:</b>	1
<b>Purpose:</b>	A segment to specify an address of a place of collection or delivery for a goods item.
<b>Dependency Notes:</b>	
<b>Semantic Notes:</b>	
<b>Comments:</b>	
<b>Notes:</b>	For all entities the composite C058 and elements 3251 and 3207 must be used.

Additionally for nationals send the tax payer number in C082:3039.

Additionally whenever NAD:3035='CA' then do use C082:1131 and the identification placed in C082:3039 must be preceded by the ISO country code (2 digit) corresponding to the nationality of the carrier.

When identifying a Portuguese entity use code '167' in DE:1131 and code '155' in DE:3055.

Information for terminal operator on the sea-side (NAD:3035 is 'TR') is required except when the manifest type is transit (SG2:GOR:DE8323='3').

Information about the warehouse depositor (NAD:3035 is 'WD') is required after Customs vessel call Id is activated, except when the manifest type is transit (SG2:GOR:DE8323='3').

The entities qualified by codes 'TR', 'WD' and 'WH' must be Portuguese.

Example: Warehouse depositor tax payer number 501566198.

NAD+WD+501566198:167:155'

#### Data Element Summary

<u>Data Element</u>	<u>Component Element</u>	<u>Name</u>	<u>Base Attributes</u>	<u>User Attributes</u>
3035		<b>PARTY QUALIFIER</b>	<b>M an..3</b>	<b>M</b>
		Code giving specific meaning to a party.		
	CA	Carrier		
		(3126) Party undertaking or arranging transport of goods between named points.		
	CN	Consignee		
		(3132) Party to which goods are consigned.		
		All details about consignor are classified as sensitive information.		
	CZ	Consignor		
		(3336) Party which, by contract with a carrier, consigns or sends goods with the carrier, or has them conveyed by him. Synonym: shipper, sender.		
		All details about consignor are classified as sensitive information.		
	EX	Exporter		
		(3030) Party who makes - or on whose behalf a Customs clearing agent or other authorized person makes - an export declaration. This may include a manufacturer, seller or other person. Within a Customs union, consignor may have the same meaning as exporter.		
		All details about exporter are classified as sensitive information.		
	IM	Importer		
		(3020) Party who makes - or on whose behalf a Customs clearing agent or other authorized person makes - an import declaration. This may include a person who has possession of the goods or to whom the goods are consigned.		
		All details about importer are classified as sensitive information.		
	N1	Notify party no. 1		
		All details about notify party are classified as sensitive information.		

N2	Notify party no. 2
	All details about notify party are classified as sensitive information.
NI	Notify party
	(3180) Party to be notified of arrival of goods.
	All details about notify party are classified as sensitive information.
OS	Original shipper
	The original supplier of the goods.
	All details about original shipper are classified as sensitive information. It must be used when on export manifests.
TR	Terminal operator
	A party which handles the loading and unloading of marine vessels.
WD	Warehouse depositor
	(3004) Party depositing goods in a warehouse.
	For the purposes of this context, this entity is responsible before Customs of the goods placed under its supervision.
WH	Warehouse keeper
	(3022) Party taking responsibility for goods entered into a warehouse.
	This entity is responsible for the reception, keeping and delivery of the goods by land side in a terminal.
ZOP	
	<i>Only provided for backward compatibility. It will be treated like the location provided in the LOC segment in segment group 41.</i>

**C082****PARTY IDENTIFICATION DETAILS****C****D**

Identification of a transaction party by code.

This composite element is required when the entity is Portuguese or is a Carrier.

<b>3039</b>	<b>Party id. identification</b>	<b>M</b>	<b>an..35</b>	<b>M</b>
-------------	---------------------------------	----------	---------------	----------

Code identifying a party involved in a transaction.

<b>1131</b>	<b>Code list qualifier</b>	<b>C</b>	<b>an..3</b>	<b>R</b>
-------------	----------------------------	----------	--------------	----------

Identification of a code list.

52	Value added tax identification
	Value added tax identification code.
	Use when the entity identified in DE:3039 is not Portuguese.
	Portuguese Customs code VIES.
53	Passport number
	Number assigned to a passport.
	Portuguese Customs code P.
113	Customs office
	Customs administrative unit competent for the performance of Customs formalities, and the premises or other areas approved for the purpose by the competent authorities (CCC).
	Use when the code in DE:3039 identifies a Customs Office, independent of its nationality.
167	Tax party identification
	Code assigned by a tax authority to identify a party.
	To use when the entity is Portuguese. Portuguese Customs code NIF.
174	Citizen identification
	Portuguese Customs code BI.
Z01	Authorized entity identification
	Self explanatory.
	Use this qualifier when the identification in 3039 is related with an Authorized entity (Importer/Exporter).
Z02	Other
	Use this code to state that the id type in DE:3039 is not included in the other types listed in this element and the entity is not Portuguese.
Z03	Company Identification Number
	Número de Identificação de Pessoa Colectiva (NIPC).
	Use when the entity identified in DE:3039 is not Portuguese.
	Portuguese Customs code NIPC.

<b>3055</b>	<b>Code list responsible agency, coded</b>	<b>C</b>	<b>an..3</b>	<b>D</b>
	Code identifying the agency responsible for a code list. If the entity is a Carrier (DE:3055 = 'CA'), then this element shall not be sent.			
	155 PT, Portuguese Customs			
<b>C058</b>	<b>NAME AND ADDRESS</b>	<b>C</b>		<b>R</b>
	Unstructured name and address: one to five lines. <i>When NAD:3035 is 'TR' this composite element is only provided for backward compatibility. Any information will be treated like in the LOC segment.</i>			
<b>3124</b>	<b>Name and address line</b>	<b>M</b>	<b>an..35</b>	<b>M</b>
	Free form name and address description. Name of the entity.			
<b>3124</b>	<b>Name and address line</b>	<b>C</b>	<b>an..35</b>	<b>O</b>
	Free form name and address description. Name of the entity.			
<b>3124</b>	<b>Name and address line</b>	<b>C</b>	<b>an..35</b>	<b>R</b>
	Free form name and address description. Address of the entity.			
<b>3124</b>	<b>Name and address line</b>	<b>C</b>	<b>an..35</b>	<b>O</b>
	Free form name and address description. Address of the entity.			
<b>3124</b>	<b>Name and address line</b>	<b>C</b>	<b>an..35</b>	<b>O</b>
	Free form name and address description. Place other than the a city.			
<b>C080</b>	<b>PARTY NAME</b>	<b>C</b>		<b>X</b>
	Identification of a transaction party by name, one to five lines. Party name may be formatted.			
<b>3036</b>	<b>Party name</b>	<b>M</b>	<b>an..35</b>	<b>X</b>
	Name of a party involved in a transaction.			
<b>3036</b>	<b>Party name</b>	<b>C</b>	<b>an..35</b>	<b>X</b>
	Name of a party involved in a transaction.			
<b>3036</b>	<b>Party name</b>	<b>C</b>	<b>an..35</b>	<b>X</b>
	Name of a party involved in a transaction.			
<b>3036</b>	<b>Party name</b>	<b>C</b>	<b>an..35</b>	<b>X</b>
	Name of a party involved in a transaction.			
<b>3036</b>	<b>Party name</b>	<b>C</b>	<b>an..35</b>	<b>X</b>
	Name of a party involved in a transaction.			
<b>3045</b>	<b>Party name format, coded</b>	<b>C</b>	<b>an..3</b>	<b>X</b>
	Specification of the representation of a party name.			
<b>C059</b>	<b>STREET</b>	<b>C</b>		<b>X</b>
	Street address and/or PO Box number in a structured address: one to three lines.			
<b>3042</b>	<b>Street and number/p.o. box</b>	<b>M</b>	<b>an..35</b>	<b>X</b>
	Street and number in plain language, or Post Office Box No.			
<b>3042</b>	<b>Street and number/p.o. box</b>	<b>C</b>	<b>an..35</b>	<b>X</b>
	Street and number in plain language, or Post Office Box No.			
<b>3042</b>	<b>Street and number/p.o. box</b>	<b>C</b>	<b>an..35</b>	<b>X</b>
	Street and number in plain language, or Post Office Box No.			
<b>3042</b>	<b>Street and number/p.o. box</b>	<b>C</b>	<b>an..35</b>	<b>X</b>
	Street and number in plain language, or Post Office Box No.			
<b>3164</b>	<b>CITY NAME</b>	<b>C</b>	<b>an..35</b>	<b>R</b>
	Name of a city (a town, a village) for addressing purposes.			
<b>3229</b>	<b>COUNTRY SUB-ENTITY IDENTIFICATION</b>	<b>C</b>	<b>an..9</b>	<b>O</b>
	Identification of the name of sub-entities (state, province) defined by appropriate governmental agencies. 1-3 character subdivision code ISO 3166-2.			



**3251****POSTCODE IDENTIFICATION****C an..9****D**

Code defining postal zones or addresses.

Postal code when exists.

**3207****COUNTRY, CODED****C an..3****R**

Identification of the name of a country or other geographical entity as specified in ISO 3166.

2-letter country code ISO 3166-1.

**Segment:** **GDS** Nature of Cargo  
**Position:** 1960  
**Group:** SG19-SG41  
**Level:** 3  
**Usage:** Conditional (Required)  
**Max Use:** 1  
**Purpose:** A segment to describe the nature of cargo.

**Dependency Notes:****Semantic Notes:****Comments:****Notes:**

The general description must be given by the Annex II - Eurostat Maritime Transport Directive with two digits.

Example: Solid bulk, agricultural products

GDS+23::2'

**Data Element Summary**

<u>Data Element</u>	<u>Component Element</u>	<u>Name</u>	<u>Base Attributes</u>	<u>User Attributes</u>
<b>C703</b>		<b>NATURE OF CARGO</b>	<b>C</b>	<b>R</b>
		Rough classification of a type of cargo.		
	<b>7085</b>	<b>Nature of cargo, coded</b>	<b>M an..3</b>	<b>M</b>
		Code indicating the type of cargo as a rough classification.		
		Annex II - Eurostat Maritime Transport Directive		
	<b>1131</b>	<b>Code list qualifier</b>	<b>C an..3</b>	<b>X</b>
	<b>3055</b>	<b>Code list responsible agency, coded</b>	<b>C an..3</b>	<b>O</b>
		Code identifying the agency responsible for a code list.		
		2 CEC (Commission of the European Communities)		
		Generic: see also 140, 141, 142, 162.		

<b>Group:</b>	<b>MEA</b> Segment Group 43: Measurements
<b>Position:</b>	1970
<b>Group:</b>	Segment Group 41 (Goods Item Details) Conditional (Dependent)
<b>Level:</b>	3
<b>Usage:</b>	Conditional (Dependent)
<b>Max Use:</b>	2
<b>Purpose:</b>	A group of segments to specify measurements applicable to a goods item.
<b>Notes:</b>	Two occurrences of the group can be used, one to display the gross weight and another to display volume. Weight must be displayed in every occasion, while the volume is an optional information.

## Segment Summary

	<u>Pos.</u> <u>No.</u>	<u>Seg.</u> <u>ID</u>	<u>Name</u>	<u>Req.</u> <u>Des.</u>	<u>Max.</u> <u>Use</u>	<u>Group:</u> <u>Repeat</u>
M	1980	MEA	Measurements	M	1	

**Segment:** **MEA** Measurements  
**Position:** 1980 (Trigger Segment)  
**Group:** SG19-SG41-SG43  
**Level:** 3  
**Usage:** Mandatory  
**Max Use:** 1  
**Purpose:** A segment to specify measurements, other than dimensions, applicable to a goods item.

**Dependency Notes:****Semantic Notes:****Comments:****Notes:**

For physical measures (weight and volume), the value in element 6066 shall be rounded to two decimal positions. Decimal values equal or above 0,005, shall be rounded to 0,01. Decimal values lower than 0,005 shall be rounded to 0,00. The decimal point shall not be sent. The two rightmost digits will be considered as the decimal position. Example, a volume of 66,357 cubic meters shall be reported as 6636 and will be interpreted as 66,36 by the receiver.

Example: Gross weight 3928 Kg.

MEA+AAI+AAD+KGM:392800'

Example: Volume: 43,221 m3.

MEA+AAI+ABJ+MTQ:4322'

**Data Element Summary**

<u>Data Element</u>	<u>Component Element</u>	<u>Name</u>	<u>Base Attributes</u>	<u>User Attributes</u>
<b>6311</b>		<b>MEASUREMENT PURPOSE QUALIFIER</b> Specification of the purpose of the measurement. AAE Measurement [6314] Value of the measured unit. AAI Item weight Weight at line item level. <i>Only provided for backward compatibility. It will be used like 'AAE'.</i>	<b>M an..3</b>	<b>M</b>
<b>C502</b>		<b>MEASUREMENT DETAILS</b> Identification of measurement type.	<b>C</b>	<b>R</b>
	<b>6313</b>	<b>Property measured, coded</b> Specification of the property measured. AAD Total gross weight [6292] Weight (mass) of goods including packing but excluding the carrier's equipment. ABJ Volume The amount of air space taken up by the entity identified in the 6311 qualifier.	<b>C an..3</b>	<b>R</b>
	<b>6321</b>	<b>Measurement significance, coded</b>	<b>C an..3</b>	<b>X</b>
	<b>6155</b>	<b>Measurement attribute identification</b>	<b>C an..17</b>	<b>X</b>
	<b>6154</b>	<b>Measurement attribute</b>	<b>C an..70</b>	<b>X</b>
<b>C174</b>		<b>VALUE/RANGE</b> Measurement value and relevant minimum and maximum tolerances in that order.	<b>C</b>	<b>R</b>
	<b>6411</b>	<b>Measure unit qualifier</b> Indication of the unit of measurement in which weight (mass), capacity, length, area, volume or other quantity is expressed. UN/ECE Recommendation 20 - Annex II KGM kilogram MTQ cubic meter	<b>M an..3</b>	<b>M</b>
	<b>6314</b>	<b>Measurement value</b> Value of the measured unit.	<b>C an..18</b>	<b>R</b>

Common Platform - Manifest Message Format - Version 1.5e

	<b>6162</b>	<b>Range minimum</b>	<b>C</b>	<b>n..18</b>	<b>X</b>
	<b>6152</b>	<b>Range maximum</b>	<b>C</b>	<b>n..18</b>	<b>X</b>
	<b>6432</b>	<b>Significant digits</b>	<b>C</b>	<b>n..2</b>	<b>X</b>
<b>7383</b>		<b>SURFACE/LAYER INDICATOR, CODED</b>	<b>C</b>	<b>an..3</b>	<b>X</b>

**Group:** **RFF** **Segment Group 45: Reference**  
**Position:** 2030  
**Group:** Segment Group 41 (Goods Item Details) Conditional (Dependent)  
**Level:** 3  
**Usage:** Conditional (Optional)  
**Max Use:** 9  
**Purpose:** A group of segments to identify references to a goods item.  
**Notes:** This group is to provide a way to send other references related with the goods.

When these references are transport documents then they must refer to the previous transport stage.

Documents referenced in this group are not to be used for customs purposes. Documents for customs purposes are to be referenced in the DOC segment in group 49.

If the message function is different of 2, 9, 46 or 47 then the Customs Summary Declaration Number must be provided by using qualifier ABT in element RFF:1153.

#### Segment Summary

	<b>Pos.</b>	<b>Seg.</b>		<b>Req.</b>	<b>Max.</b>	<b>Group:</b>
	<b><u>No.</u></b>	<b><u>ID</u></b>	<b><u>Name</u></b>	<b><u>Des.</u></b>	<b><u>Use</u></b>	<b><u>Repeat</u></b>
M	2040	RFF	Reference	M	1	
R	2050	DTM	Date/Time/Period	C	9	

**Segment:** **RFF** Reference  
**Position:** 2040 (Trigger Segment)  
**Group:** SG19-SG41-SG45  
**Level:** 3  
**Usage:** Mandatory  
**Max Use:** 1  
**Purpose:** A segment to identify a reference to a goods item.  
**Dependency Notes:**  
**Semantic Notes:**  
**Comments:**  
**Notes:**

Example: House Bill of Lading 554142.

RFF+BH:554142'

Data Element Summary				
<u>Data Element</u>	<u>Component Element</u>	<u>Name</u>	<u>Base Attributes</u>	<u>User Attributes</u>
<b>C506</b>		<b>REFERENCE</b>	<b>M</b>	<b>M</b>
		Identification of a reference.		
	<b>1153</b>	<b>Reference qualifier</b>	<b>M an..3</b>	<b>M</b>
		Code giving specific meaning to a reference segment or a reference number.		
	AAB	Proforma invoice number [1088] Reference number assigned by the seller to a Proforma Invoice. Reference.		
	AAM	Waybill number Reference number assigned to a waybill, see: 1001 = 700. Document of Transport.		
	AAP	Part consignment number [1310] Reference to a specific consignment forming part of a contract allowing part deliveries. Reference.		
	ABT	Customs declaration number [1426] Number, assigned or accepted by Customs, to identify a Goods declaration. Reference.		
	AEE	Eur 1 certificate number Reference number assigned to a Eur 1 certificate. Reference.		
	AEW	Empty container bill number Reference number assigned to an empty container bill, see: 1001 = 708. Document of Transport. Only allowed for the movement of empty containers.		
	AEX	Non-negotiable maritime transport document number Reference number assigned to a sea waybill, see: 1001 = 712. Document of Transport.		
	AEZ	Despatch note (post parcels) number (1128) Reference number assigned to a despatch note (post parcels), see: 1001 = 750. Document of Transport.		
	AFA	Through bill of lading number Reference number assigned to a through bill of lading, see: 1001 = 761. Document of Transport.		
	AFB	Cargo manifest number Reference number assigned to a cargo manifest, see: 1001 = 785. Document of Transport.		
	AFM	Secondary Customs reference		

	Reference.
AHI	Transport contract reference number Reference number of a transport contract.
	Reference.
AHT	Quarantine/treatment status reference number Coded quarantine/treatment status of a container and its cargo and packing materials, generated by a shipping company based upon declarations presented by a shipper.
	Reference.
AID	Certificate of conformity Certificate certifying the conformity to predefined definitions.
	Reference.
AIZ	Consolidated invoice number Invoice number into which other invoices are consolidated.
	Reference.
AKA	Container disposition order reference number Reference assigned to the empty container disposition order.
	Reference.
AKR	General cargo consignment reference number Reference number identifying a particular general cargo (non-containerised or break bulk) consignment.
	Document of Transport.
ALK	Consignee's invoice number The invoice number assigned by a consignee.
	Reference.
BH	House bill of lading number Reference number assigned to a house bill of lading, see: 1001 = 714.
	Document of Transport.
BM	Bill of lading number Reference number assigned to a bill of lading, see: 1001 = 705.
	Document of Transport.
BN	Booking reference number [1016] Reference number assigned by the carrier or his agent when cargo space is reserved prior to loading.
	Reference.
CFO	Consignor's further order Reference of an order given by the consignor after departure of the means of transport.
	Reference.
CG	Consignee's order number
	Reference.
CMR	Road consignment note number Reference number assigned to a road consignment note, see: 1001 = 730.
	Document of Transport.
CU	Consignor's reference number [1140] Reference number assigned by a consignor to a particular shipment for his own purposes or for those of the consignee.
	Reference.
ED	Export declaration Number assigned by the exporter to his export declaration number submitted to an authority.
	Reference.
EX	Export licence number [1208] Reference number assigned by issuing authority to an Export Licence.
	Reference.



Common Platform - Manifest Message Format - Version 1.5e

	FF	Freight forwarder's reference number [1460] Reference number assigned to the consignment by the freight forwarder. Reference.
	HWB	House waybill number Reference number assigned to a house waybill, see: 1001 = 703. Document of Transport.
	IP	Import licence number [1106] Reference number assigned by the issuing authority to an Import Licence. Reference.
	IV	Invoice number [1334] Reference number assigned by the seller to a Commercial Invoice. Reference.
	MA	Ship notice/manifest number Document of Transport.
	MB	Master bill of lading number Reference number assigned to a master bill of lading, see: 1001 = 704. Document of Transport.
	MWB	Master air waybill number Reference number assigned to a master air waybill, see: 1001 = 741. Document of Transport.
	PK	Packing list number (1014) Reference number assigned to a packing list, see: 1001 = 271. Document of Transport.
	RCN	Railway consignment note number Reference number assigned to a rail consignment note, see: 1001 = 720. Document of Transport.
	SRN	Shipment reference number [1140] Reference number assigned by a consignor to a particular shipment for his own purposes or for those of the consignee. Reference.
	UCN	Unique consignment reference number (1202) Unique reference of a consignment (UCRN) used for identification purposes in documents and messages exchanged between parties in international trade. See also: Unique Identifier Code (UNIC) in UN/ECE Recommendation No. 8, March 1992. Reference.
<b>1154</b>	<b>Reference number</b>	<b>C an..35 R</b> Identification number the nature and function of which can be qualified by an entry in data element 1153 Reference qualifier.
<b>1156</b>	<b>Line number</b>	<b>C an..6 X</b>
<b>4000</b>	<b>Reference version number</b>	<b>C an..35 X</b>

**Segment:** **DTM** Date/Time/Period  
**Position:** 2050  
**Group:** SG19-SG41-SG45  
**Level:** 4  
**Usage:** Conditional (Required)  
**Max Use:** 9  
**Purpose:** A segment to indicate date and time relating to the reference.

**Dependency Notes:****Semantic Notes:****Comments:****Notes:**

The complete meaning of this date depends of the type of reference in the previous RFF segment, stated in RFF:C506:1153 data element.

Example: Date of the reference: "2003/10/08 - 10:15"

DTM+171:200310081015:203'

Example: Date of the reference: "2003/10/08 - 15:25 UTC+3". Attention that in this case the defined escape character must be used in the date/time format, if the time zone is positive in relation to GMT. If the escape character is '?' then

DTM+171:200310081525?+03:303'

**Data Element Summary**

<b>Data Element</b>	<b>Component Element</b>	<b>Name</b>	<b>Base Attributes</b>	<b>User Attributes</b>
<b>C507</b>		<b>DATE/TIME/PERIOD</b>	<b>M</b>	<b>M</b>
		Date and/or time, or period relevant to the specified date/time/period type.		
	<b>2005</b>	<b>Date/time/period qualifier</b>	<b>M an..3</b>	<b>M</b>
		Code giving specific meaning to a date, time or period.		
		171 Reference date/time		
		Date/time on which the reference was issued.		
	<b>2380</b>	<b>Date/time/period</b>	<b>C an..35</b>	<b>R</b>
		The value of a date, a date and time, a time or of a period in a specified representation.		
		According with UN/ECE Recommendation N°7.		
	<b>2379</b>	<b>Date/time/period format qualifier</b>	<b>C an..3</b>	<b>R</b>
		Specification of the representation of a date, a date and time or of a period.		
		203 CCYYMMDDHHMM		
		Calendar date including time with minutes: C=Century; Y=Year; M=Month; D=Day; H=Hour; M=Minutes.		
		303 CCYYMMDDHHMMZZZ		
		See 203 plus Z=Time zone.		

**Group:** **PCI** **Segment Group 46: Package Identification**  
**Position:** 2060  
**Group:** Segment Group 41 (Goods Item Details) Conditional (Dependent)  
**Level:** 3  
**Usage:** Conditional (Dependent)  
**Max Use:** 999  
**Purpose:** A group of segments to specify marks and numbers of a goods item.  
**Notes:** If it is a transport equipment and it is not empty the element 8275 is required.

When marks are unknown fill in element 7102 with "No Marks".

When referring to vehicles the first 7102 is used to declare the maker and the model, and the second to declare the chassis number. This is required by Customs.

These values are not needed in the case of empty transport equipment, since an empty transport equipment does not carry packages.

#### Segment Summary

	<u>Pos.</u> <u>No.</u>	<u>Seg.</u> <u>ID</u>	<u>Name</u>	<u>Req.</u> <u>Des.</u>	<u>Max.</u> <u>Use</u>	<u>Group:</u> <u>Repeat</u>
M	2070	PCI	Package Identification	M	1	

<b>Segment:</b>	<b>PCI</b> Package Identification
<b>Position:</b>	2070 (Trigger Segment)
<b>Group:</b>	SG19-SG41-SG46
<b>Level:</b>	3
<b>Usage:</b>	Mandatory
<b>Max Use:</b>	1
<b>Purpose:</b>	A segment to specify marks and numbers of a good item.
<b>Dependency Notes:</b>	
<b>Semantic Notes:</b>	
<b>Comments:</b>	
<b>Notes:</b>	Example: Free text marks, marks: RAW, numbers: 12345.

PCI+28+RAW:12345'

Data Element Summary				
<u>Data Element</u>	<u>Component Element</u>	<u>Name</u>	<u>Base Attributes</u>	<u>User Attributes</u>
4233		<b>MARKING INSTRUCTIONS, CODED</b> Code indicating instructions on how specified packages or physical units should be marked. UN/EDIFACT code list for Data Element 4233.	<b>C an..3</b>	<b>O</b>
C210		<b>MARKS &amp; LABELS</b> Shipping marks on packages in free text; one to ten lines.	<b>C</b>	<b>R</b>
	7102	<b>Shipping marks</b> Marks and numbers identifying individual packages. See segment group 46 notes in the situation of vehicles.	<b>M an..35</b>	<b>M</b>
	7102	<b>Shipping marks</b> Marks and numbers identifying individual packages. See segment group 46 notes in the situation of vehicles.	<b>C an..35</b>	<b>O</b>
	7102	<b>Shipping marks</b> Marks and numbers identifying individual packages.	<b>C an..35</b>	<b>O</b>
	7102	<b>Shipping marks</b> Marks and numbers identifying individual packages.	<b>C an..35</b>	<b>O</b>
	7102	<b>Shipping marks</b> Marks and numbers identifying individual packages.	<b>C an..35</b>	<b>O</b>
	7102	<b>Shipping marks</b> Marks and numbers identifying individual packages.	<b>C an..35</b>	<b>O</b>
	7102	<b>Shipping marks</b> Marks and numbers identifying individual packages.	<b>C an..35</b>	<b>O</b>
	7102	<b>Shipping marks</b> Marks and numbers identifying individual packages.	<b>C an..35</b>	<b>O</b>
	7102	<b>Shipping marks</b> Marks and numbers identifying individual packages.	<b>C an..35</b>	<b>O</b>
	7102	<b>Shipping marks</b> Marks and numbers identifying individual packages.	<b>C an..35</b>	<b>O</b>
	7102	<b>Shipping marks</b> Marks and numbers identifying individual packages.	<b>C an..35</b>	<b>O</b>
	7102	<b>Shipping marks</b> Marks and numbers identifying individual packages.	<b>C an..35</b>	<b>O</b>
	7102	<b>Shipping marks</b> Marks and numbers identifying individual packages.	<b>C an..35</b>	<b>O</b>
	7102	<b>Shipping marks</b> Marks and numbers identifying individual packages.	<b>C an..35</b>	<b>O</b>
8275		<b>CONTAINER/PACKAGE STATUS, CODED</b>	<b>C an..3</b>	<b>X</b>
C827		<b>TYPE OF MARKING</b> Specification of the type of marking that reflects the method that was used and the conventions adhered to for marking (e.g. of packages).	<b>C</b>	<b>X</b>
	7511	<b>Type of marking, coded</b> To specify the type of marking that reflects the method and the conventions adhered to for marking.	<b>M an..3</b>	<b>X</b>
	1131	<b>Code list qualifier</b> Identification of a code list.	<b>C an..3</b>	<b>X</b>
	3055	<b>Code list responsible agency, coded</b> Code identifying the agency responsible for a code list.	<b>C an..3</b>	<b>X</b>

<b>Group:</b>	<b>GOR</b> Segment Group 48: Governmental Requirements
<b>Position:</b>	2140
<b>Group:</b>	Segment Group 41 (Goods Item Details) Conditional (Dependent)
<b>Level:</b>	3
<b>Usage:</b>	Conditional (Optional)
<b>Max Use:</b>	9
<b>Purpose:</b>	A group of segments to identify customs and other governmental procedures and required documents relating to the goods item.
<b>Notes:</b>	<p>This group has several uses, all related with customs procedures. It is to provide information about the applicable governmental procedures related to import (according with Customs definition), export (according with Customs definition) and transit (according with Customs definition).</p> <p>One usage is to give the EU status. This is, if goods are in free practice or not, and if it has Customs formalities to fulfill.</p> <p>It is also used to state if simplified procedures are used or not, and if they are, then inform the level of simplification applied.</p> <p>On some of these situations the group 49 must be used. For document details see DOC segment, group 49.</p> <p>If group 49 is used, then segment FTX must be used in order to identify the issuer of the document identified in group 49 (see group 49 notes and FTX notes for the particular case of stamped manifests). For each occurrence of group 49 there must be one occurrence of FTX segment. Formally as the standard structure does not allow a direct relation between the FTX segment with group 49, the rule to be followed is that the issuers in each FTX will be associated with the documents in group 49 by order of appearance. This is, the first occurrence FTX will be associated with the first occurrence of group 49, and so on.</p> <p>If there is the need to identify documents for customs purposes that are not related with the goods status and with the simplified procedure, or they are related with goods status but exceeds 9 occurrences, then use additional occurrences of group 48 with qualifiers from 'ZD1' to 'ZD7' in element 8323 for this purpose.</p> <p>If all 9 occurrences of group 49 of all qualifiers 'ZD*' and of the goods status were used, and there is the need to identify additional documents, then an additional occurrences of group 41 must be created.</p>

## Segment Summary

	<b>Pos. No.</b>	<b>Seg. ID</b>	<b>Name</b>	<b>Req. Des.</b>	<b>Max. Use</b>	<b>Group: Repeat</b>
M	2150	GOR	Governmental Requirements	M	1	
D	2190	FTX	Free Text	C	9	
	2200		Segment Group 49: Document/Message Details	C	9	

**Segment:** **GOR** **Governmental Requirements**  
**Position:** 2150 (Trigger Segment)  
**Group:** SG19-SG41-SG48  
**Level:** 3  
**Usage:** Mandatory  
**Max Use:** 1  
**Purpose:** A segment to indicate applicable governmental procedures related to import, export and transport of the goods item.

**Dependency Notes:****Semantic Notes:****Comments:****Notes:**

In the context of the group usage, the purpose of the segment is to indicate applicable governmental procedures related to import (according with Customs definition), export (according with Customs definition) and transit (according with Customs definition).

In a situation of a regular line service, these codes are applied in the simplified transit procedures in 8323. They are 'ZT1', 'ZW', 'ZTF', 'ZTD', 'ZC' and 'ZX', and they are to be used according to the Customs procedure in practice. If no simplified transit procedure is applied then use code 'ZWA'.

These codes are applied without regular line services in 8323. They are 'ZC', 'ZN', 'ZF' and 'ZWA', and they are to be used to give information about the status of goods.

Codes 'ZD1', 'ZD2', 'ZD3', 'ZD4', 'ZD5', 'ZD6' and 'ZD7' are to be used when there is the need to identified additional documents.

Example: Community Goods.

GOR+ZC+5'

**Data Element Summary**

<u>Data Element</u>	<u>Component Element</u>	<u>Name</u>	<u>Base Attributes</u>	<u>User Attributes</u>
8323		<b>TRANSPORT MOVEMENT, CODED</b>	<b>C an..3</b>	<b>R</b>
		Code indicating the movement of goods (e.g. import, export, transit).		
		Usage of this element:		
		1. Authorised Regular Line services (Regulation n° 2454/93)		
		1.1. With simplified transit procedures (ZS1 and ZS2)		
		'ZT1' Non-Community Goods and, under certain conditions, for Community Goods 'ZTF' and 'ZW' Community Goods. An interchange is used between 2 EC Customs territories where VAT is applied in one of them but not in the other		
		'ZTD' Goods supported by a transit document ZT1, ZT2 or ZTF, a TIR or ATA booklet, other suspension regimes and other documents accepted by Customs Authority.		
		'ZC' Community Goods in the remaining interchange		
		'ZX' Community Goods to be exported not subject to a transit regime.		
		1.2. Simplified transit procedures not applied (ZWA)		
		2. Without regular line services		
		2.1. Use the following codes when the manifest is cleared by the Customs, or the manifest has the identification of the Authorized Expeditor		
		'ZF' Shipping of Community goods with destination/origin in a EC Customs territory where Directive 77/388/CEE is not applied		
		'ZC' Use the code when the manifest is cleared by the Customs, or the manifest has the identification of the Authorized Expeditor and others for which the community status can be proofed		
		'ZWA' Use the code when the Authorized Expeditor is not available and the Operator hasn't a Stamped Manifest.		
		'ZN' Remaining Goods		
		ZC	Goods that their status can be proofed.	
		ZD1	Additional documents	
		ZD2	Additional documents	
		ZD3	Additional documents	
		ZD4	Additional documents	

Common Platform - Manifest Message Format - Version 1.5e

	ZD5	Additional documents			
	ZD6	Additional documents			
	ZD7	Additional documents			
	ZF	Shiiping of community goods with destination/origin in a EC Customs territory where Directive 77/388/CEE is not applied			
	ZN	Remaining goods			
	ZS0	No Simplified Procedures			
	ZS1	Simplified Procedures Level I			
	ZS2	Simplified Procedures Level II			
	ZT1	Goods subject to an external community transit regime.			
	ZTD	Goods subject to a transit regime or transported in the scope of the active perfectionism, deposit or temporary import.			
	ZTF	Goods subject to internal transit regime from, to or between non fiscal territories.			
	ZW	T2F Customs status			
	ZWA	Without acronym			
	ZX	Community Goods to be exported not subject to a transit regime.			
<b>C232</b>	<b>GOVERNMENT ACTION</b>		<b>C</b>		<b>R</b>
	Code indicating a type of government action.				
	<b>9415 Government agency, coded</b>		<b>C</b>	<b>an..3</b>	<b>R</b>
	To indicate government agencies that are involved.				
	5 Customs				
	Customs authorities.				
	<b>9411 Government involvement, coded</b>		<b>C</b>	<b>an..3</b>	<b>X</b>
	<b>9417 Government action, coded</b>		<b>C</b>	<b>an..3</b>	<b>X</b>
	<b>9353 Government procedure, coded</b>		<b>C</b>	<b>an..3</b>	<b>X</b>
<b>C232</b>	<b>GOVERNMENT ACTION</b>		<b>C</b>		<b>X</b>
	Code indicating a type of government action.				
	<b>9415 Government agency, coded</b>		<b>C</b>	<b>an..3</b>	<b>X</b>
	To indicate government agencies that are involved.				
	<b>9411 Government involvement, coded</b>		<b>C</b>	<b>an..3</b>	<b>X</b>
	Indication of requirement and status of government involvement.				
	<b>9417 Government action, coded</b>		<b>C</b>	<b>an..3</b>	<b>X</b>
	To indicate type of government action such as inspection, detention, fumigation, security.				
	<b>9353 Government procedure, coded</b>		<b>C</b>	<b>an..3</b>	<b>X</b>
	Code identifying the treatment applied by the government to goods which are subject to a control.				
<b>C232</b>	<b>GOVERNMENT ACTION</b>		<b>C</b>		<b>X</b>
	Code indicating a type of government action.				
	<b>9415 Government agency, coded</b>		<b>C</b>	<b>an..3</b>	<b>X</b>
	To indicate government agencies that are involved.				
	<b>9411 Government involvement, coded</b>		<b>C</b>	<b>an..3</b>	<b>X</b>
	Indication of requirement and status of government involvement.				
	<b>9417 Government action, coded</b>		<b>C</b>	<b>an..3</b>	<b>X</b>
	To indicate type of government action such as inspection, detention, fumigation, security.				
	<b>9353 Government procedure, coded</b>		<b>C</b>	<b>an..3</b>	<b>X</b>
	Code identifying the treatment applied by the government to goods which are subject to a control.				
<b>C232</b>	<b>GOVERNMENT ACTION</b>		<b>C</b>		<b>X</b>
	Code indicating a type of government action.				
	<b>9415 Government agency, coded</b>		<b>C</b>	<b>an..3</b>	<b>X</b>
	To indicate government agencies that are involved.				
	<b>9411 Government involvement, coded</b>		<b>C</b>	<b>an..3</b>	<b>X</b>
	Indication of requirement and status of government involvement.				
	<b>9417 Government action, coded</b>		<b>C</b>	<b>an..3</b>	<b>X</b>
	To indicate type of government action such as inspection, detention, fumigation, security.				

**9353 Government procedure, coded**

**C an..3 X**

Code identifying the treatment applied by the government to goods which are subject to a control.



**Segment:** **FTX** Free Text  
**Position:** 2190  
**Group:** SG19-SG41-SG48  
**Level:** 4  
**Usage:** Conditional (Dependent)  
**Max Use:** 9  
**Purpose:** A segment to provide additional governmental requirements information for the goods item.

**Dependency Notes:****Semantic Notes:****Comments:****Notes:**

This segment is to specify the information regarding the entity that issued the document identified in segment group 49 (see notes of group 48).

When the document issuer is a Customs Office then it must be identified by its code using composite C107. Customs Office identification code for some european countries can be found at [http://ec.europa.eu/taxation\\_customs/dds/pt/home.htm](http://ec.europa.eu/taxation_customs/dds/pt/home.htm). Otherwise, a text in composite C108 shall be used to provide the identification.

In case where segment group 49 is used to state the existence of a stamped manifest, then use this segment to identify the Customs Office that stamped the document.

Example: Certificate issued by Customs Office identified by DE004600.

FTX+CUS++DE004600'

**Data Element Summary**

<u>Data Element</u>	<u>Component Element</u>	<u>Name</u>	<u>Base Attributes</u>	<u>User Attributes</u>
4451		<b>TEXT SUBJECT QUALIFIER</b> Code specifying subject of a free text. CUS Customs declaration information Note contains customs declaration information.	<b>M an..3</b>	<b>M</b>
4453		<b>TEXT FUNCTION, CODED</b>	<b>C an..3</b>	<b>X</b>
C107		<b>TEXT REFERENCE</b> Coded reference to a standard text and its source. Use this composite element if a code to identify the entity is known.	<b>C</b>	<b>D</b>
	4441	<b>Free text identification</b> Free text in coded form.	<b>M an..17</b>	<b>M</b>
	1131	<b>Code list qualifier</b>	<b>C an..3</b>	<b>X</b>
	3055	<b>Code list responsible agency, coded</b> Code identifying the agency responsible for a code list. 155 PT, Portuguese Customs	<b>C an..3</b>	<b>O</b>
C108		<b>TEXT LITERAL</b> Free text; one to five lines. Use this composite element if a code to identify the entity is not known.	<b>C</b>	<b>D</b>
	4440	<b>Free text</b> Free text field available to the message sender for information.	<b>M an..70</b>	<b>M</b>
	4440	<b>Free text</b> Free text field available to the message sender for information.	<b>C an..70</b>	<b>O</b>
	4440	<b>Free text</b> Free text field available to the message sender for information.	<b>C an..70</b>	<b>O</b>
	4440	<b>Free text</b> Free text field available to the message sender for information.	<b>C an..70</b>	<b>O</b>
	4440	<b>Free text</b> Free text field available to the message sender for information.	<b>C an..70</b>	<b>O</b>
3453		<b>LANGUAGE, CODED</b>	<b>C an..3</b>	<b>X</b>

<b>Group:</b>	<b>DOC</b>	<b>Segment Group 49: Document/Message Details</b>
<b>Position:</b>	2200	
<b>Group:</b>	Segment Group 48 (Governmental Requirements)	Conditional (Optional)
<b>Level:</b>	4	
<b>Usage:</b>	Conditional (Optional)	
<b>Max Use:</b>	9	
<b>Purpose:</b>	A group of segments to specify required documents by government for the goods item.	
<b>Notes:</b>	<p>This group is to identify any document needed for customs purposes, independent of its type (customs declarations, commercial documents, MRN for ICS and ECS, or other).</p> <p>When it is needed to provide the document's date of issue or year of issue, then use segment DTM.</p> <p>In case of the stamped manifest, do not send the DTM segment.</p>	

## Segment Summary

	<b>Pos.</b>	<b>Seg.</b>		<b>Req.</b>	<b>Max.</b>	<b>Group:</b>
	<b>No.</b>	<b>ID</b>	<b>Name</b>	<b>Des.</b>	<b>Use</b>	<b>Repeat</b>
M	2210	DOC	Document/Message Details	M	1	
O	2220	DTM	Date/Time/Period	C	1	

**Segment:** **DOC** Document/Message Details  
**Position:** 2210 (Trigger Segment)  
**Group:** SG19-SG41-SG48-SG49  
**Level:** 4  
**Usage:** Mandatory  
**Max Use:** 1  
**Purpose:** A segment to indicate a document required by government.  
**Dependency Notes:**  
**Semantic Notes:**  
**Comments:**  
**Notes:**

State the document type and identification according to Customs Regulations and with what was stated in the GOR segments.

For the particular case of the need to state that there is a stamped manifest (element 1001 is 'Z07') then there is no need to identify it. In this case put 'S/N' in element 1004.

The documents referenced in this segment are for customs purposes.

Example: Community Goods (SG48:GOR:8323='ZC'), Despatch T2L No.: "ES08114123456"

DOC+825+ES08114123456'

Example: Certificate of Authorized Expeditor JTG568

DOC+Z02+JTG568'

Example: Stamped manifest

DOC+Z07+S/N'

Example: Entry Summary Declaration (MRN for Import 10PT00034000000081)

DOC+355+10PT00034000000081'

Example: Goods Declaration for Exportation (MRN for Export 10PT00028424773457)

DOC+830+10PT00028424773457'

#### Data Element Summary

Data Element	Component Element	Name	Base Attributes	User Attributes
C002		DOCUMENT/MESSAGE NAME	M	M
		Identification of a type of document/message by code or name. Code preferred.		
	1001	Document/message name, coded	C an..3	R
		Document/message identifier expressed in code.		
	2	Certificate of conformity Certificate certifying the conformity to predefined definitions.		
	3	Certificate of quality Certificate certifying the quality of goods, services etc.		
	271	Packing list Document/message specifying the distribution of goods in individual packages (in trade environment the despatch advice message is used for the packing list).		
	355	Customs summary declaration without commercial details, alternate Alternate Customs declaration summary without any commercial details. Code to be used to state a MRN in the context of ICS - Import Control System.		
		In this context, this code must be understood as "Entry Summary Declaration".		
	380	Commercial invoice Document/message claiming payment for goods or services supplied		

	under conditions agreed between seller and buyer.
581	EU Customs declaration for non-fiscal area internal Community Transit (T2F) Declaration for goods under the internal Community transit procedure in the context of trade between the "VAT" territory of EU Member States and EU territories where the VAT rules do not apply, such as Canary islands, some French overseas territories, the Channel islands and the Aaland islands, and between those territories. ("T2F" under EU Legislation).
585	EU Document for establishing the Community status of goods for certain fiscal purposes (T2LF) Form establishing the Community status of goods in the context of trade between the "VAT" territory of EU Member States and EU territories where the VAT rules do not apply, such as Canary islands, some French overseas territories, the Channel islands and the Aaland islands, and between those territories ("T2LF" under EU Legislation). Customs code 620 for this document type.
650	Handling order Document/message issued by a cargo handling organization (port administration, terminal operator, etc.) for the removal or other handling of goods under their care.
701	Universal (multipurpose) transport document Document/message evidencing a contract of carriage covering the movement of goods by any mode of transport, or combination of modes, for national as well as international transport, under any applicable international convention or national law and under the conditions of carriage of any carrier or transport operator undertaking or arranging the transport referred to in the document.
703	House waybill The document made out by an agent/consolidator which evidences the contract between the shipper and the agent/consolidator for the arrangement of carriage of goods.
704	Master bill of lading A bill of lading issued by the master of a vessel (in actuality the owner or charterer of the vessel). It could cover a number of house bills.
705	Bill of lading Negotiable document/message which evidences a contract of carriage by sea and the taking over or loading of goods by carrier, and by which carrier undertakes to deliver goods against surrender of the document. A provision in the document that goods are to be delivered to the order of a named person, or to order, or to bearer, constitutes such an undertaking.
710	Sea waybill Non-negotiable document which evidences a contract for the carriage of goods by sea and the taking over of the goods by the carrier, and by which the carrier undertakes to deliver the goods to the consignee named in the document.
712	Non-negotiable maritime transport document (generic) Non-negotiable document which evidences a contract for the carriage of goods by sea and the taking over or loading of the goods by the carrier, and by which the carrier undertakes to deliver the goods to the consignee named in the document. E.g. Sea waybill. Remark: Synonymous with "straight" or "non-negotiable Bill of lading" used in certain countries, e.g. Canada.
714	House bill of lading The bill of lading issued not by the carrier but by the freight forwarder/consolidator known by the carrier.
716	Forwarder's bill of lading Non-negotiable document issued by a freight forwarder evidencing a contract for the carriage of goods by sea and the taking over or loading of the goods by the freight forwarder, and by which the freight forwarder undertakes to deliver the goods to the consignee named in the document.
720	Rail consignment note (generic term) Transport document constituting a contract for the carriage of goods between the sender and the carrier (the railway). For international rail traffic, this document must conform to the model prescribed by the

	international conventions concerning carriage of goods by rail, e.g. CIM Convention, SMGS Convention.
722	Road list-SMGS  Accounting document, one copy of which is drawn up for each consignment note; it accompanies the consignment over the whole route and is a rail transport document.
730	Road consignment note  Transport document/message which evidences a contract between a carrier and a sender of the carriage of goods by road (generic term). Remark: For international road traffic, this document must contain at least the particulars prescribed by the convention on the contract for the international carriage of goods by road (CMR).
740	Air waybill  Document/message made out by or on behalf of the shipper which evidences the contract between the shipper and carrier(s) for carriage of goods over routes of the carrier(s) and which is identified by the airline prefix issuing the document plus a serial (IATA).
741	Master air waybill  Document/message made out by or on behalf of the agent/consolidator which evidences the contract between the agent/consolidator and carrier(s) for carriage of goods over routes of the carrier(s) for a consignment consisting of goods originated by more than one shipper (IATA).
746	Delivery notice (rail transport)  Document/message created by the consignor or by the departure station, joined to the transport or sent to the consignee, giving the possibility to the consignee or the arrival station to attest the delivery of the goods. The document must be returned to the consignor or to the departure station.
750	Despatch note (post parcels)  Document/message which, according to Article 106 of the "Agreement concerning Postal Parcels" under the UPU convention, is to accompany post parcels.
760	Multimodal/combined transport document (generic)  A transport document used when more than one mode of transportation is involved in the movement of cargo. It is a contract of carriage and receipt of the cargo for a multimodal transport. It indicates the place where the responsible transport company in the move takes responsibility for the cargo, the place where the responsibility of this transport company in the move ends and the conveyances involved.
761	Through bill of lading  Bill of lading which evidences a contract of carriage from one place to another in separate stages of which at least one stage is a sea transit, and by which the issuing carrier accepts responsibility for the carriage as set forth in the through bill of lading.
763	Forwarder's certificate of transport  Negotiable document/message issued by a forwarder to certify that he has taken charge of a specified consignment for despatch and delivery in accordance with the consignor's instructions, as indicated in the document, and that he accepts responsibility for delivery of the goods to the holder of the document through the intermediary of a delivery agent of his choice. E.g. FIATA-FCT.
764	Combined transport document (generic)  Negotiable or non-negotiable document evidencing a contract for the performance and/or procurement of performance of combined transport of goods and bearing on its face either the heading "Negotiable combined transport document issued subject to Uniform Rules for a Combined Transport Document (ICC Brochure No. 298)" or the heading "Non-negotiable Combined Transport Document issued subject to Uniform Rules for a Combined Transport Document (ICC Brochure No. 298)".
765	Multimodal transport document (generic)  Document/message which evidences a multimodal transport contract, the taking in charge of the goods by the multimodal transport operator, and an undertaking by him to deliver the goods in accordance with the terms of the contract. (International Convention on Multimodal Transport of Goods).

Common Platform - Manifest Message Format - Version 1.5e

766	Combined transport bill of lading/multimodal bill of lading Document which evidences a multimodal transport contract, the taking in charge of the goods by the multimodal transport operator, and an undertaking by him to deliver the goods in accordance with the terms of the contract.
785	Cargo manifest Listing of goods comprising the cargo carried in a means of transport or in a transport-unit. The cargo manifest gives the commercial particulars of the goods, such as transport document numbers, consignors, consignees, shipping marks, number and kind of packages and descriptions and quantities of the goods.
787	Bordereau Document/message used in road transport, listing the cargo carried on a road vehicle, often referring to appended copies of Road consignment note.
796	Derat document Document certifying that a ship is free of rats, valid to a specified date.
820	Despatch note model T European community transit declaration.
821	Despatch note model T1 Transit declaration for goods circulating under internal community transit procedures (between ECE countries).
822	Despatch note model T2 Ascertainment that the declared goods were originally produced in an ECE country.
823	Control document T5 Control document (export declaration) used particularly in case of re-sending without use with only VAT collection, refusal, nonconformity with contract etc.
825	Despatch note model T2L Ascertainment that the declared goods were originally produced in an EC country. May only be used for goods that are loaded on one single means of transport in one single departure point for one single delivery point.
830	Goods declaration for exportation Document/message by which goods are declared for export Customs clearance, conforming to the layout key set out at Appendix I to Annex C.1 concerning outright exportation to the Kyoto convention (CCC). Within a Customs union, "for despatch" may have the same meaning as "for exportation". Code to be used to state a MRN in the context of ECS - Export Control System.
851	Phytosanitary certificate Document/message issued by the competent body in the exporting country evidencing that plants, fruit, or vegetables are free from disease and fit for consumption and giving details on fumigation or other treatment to which they may have been subjected.
852	Sanitary certificate Document/message issued by the competent authority in the exporting country evidencing that alimentary and animal products, including dead animals, are fit for human consumption, and giving details, when relevant, of controls undertaken.
853	Veterinary certificate Document/message issued by the competent authority in the exporting country evidencing that live animals or birds are not infested or infected with disease, and giving details regarding their provenance, and of vaccinations and other treatment to which they have been subjected.
861	Certificate of origin Document/message identifying goods, in which the authority or body authorized to issue it certifies expressly that the goods to which the certificate relates originate in a specific country. The word "country" may include a group of countries, a region or a part of a country. This certificate may also include a declaration by the manufacturer, producer, supplier, exporter or other competent person.

Common Platform - Manifest Message Format - Version 1.5e

862	Declaration of origin
	Appropriate statement as to the origin of the goods, made in connection with their exportation by the manufacturer, producer, supplier, exporter or other competent person on the Commercial invoice or any other document relating to the goods (CCC).
864	Preference certificate of origin
	Description to be provided.
865	Certificate of origin form GSP
	Specific form of certificate of origin for goods qualifying for preferential treatment under the generalized system of preferences (includes a combined declaration of origin and certificate, form A).
933	Cargo declaration (arrival)
	Generic term, sometimes referred to as Freight declaration, applied to the documents providing the particulars required by the Customs concerning the cargo (freight) carried by commercial means of transport (CCC).
941	Embargo permit
	Document/message giving the permission to export specified goods.
951	TIF form
	International Customs transit document by which the sender declares goods for carriage by rail in accordance with the provisions of the 1952 International Convention to facilitate the crossing of frontiers for goods carried by rail (TIF Convention of UIC).
952	TIR carnet
	International Customs document (International Transit by Road), issued by a guaranteeing association approved by the Customs authorities, under the cover of which goods are carried, in most cases under Customs seal, in road vehicles and/or containers in compliance with the requirements of the Customs TIR Convention of the International Transport of Goods under cover of TIR Carnets (UN/ECE).
954	EUR 1 certificate of origin
	Customs certificate used in preferential goods interchanges between EC countries and EC external countries.
955	ATA carnet
	International Customs document (Admission Temporaire / Temporary Admission) which, issued under the terms of the ATA Convention (1961), incorporates an internationally valid guarantee and may be used, in lieu of national Customs documents and as security for import duties and taxes, to cover the temporary admission of goods and, where appropriate, the transit of goods. If accepted for controlling the temporary export and reimport of goods, international guarantee does not apply (CCC).
960	Single administrative document
	A set of documents, replacing the various (national) forms for Customs declaration within the EC, implemented on 01-01-1988.
Z01	Despatch note T2LF
	Despatch note model T2LF.
	Customs code 620 for this document type.
	<i>To be discontinued in 2014-10-01. It will be replaced by code 585.</i>
Z02	Certificate of Authorized Expeditor
Z03	Customs status certificate
	Customs code 622 for this document type.
Z04	DAA or ARC
	Administrative document of accompaniment for products with special taxes on the consumption.
	Customs code 622 for this document type.
Z05	Administrative document
	Administrative document of accompaniment for wine products with special taxes on consumption.
	Customs code 652 for this document type.
Z06	Transit simplified procedure authorization number
Z07	Stamped manifest

Common Platform - Manifest Message Format - Version 1.5e

	Z08	Despatch note T2F Declaration of internal community transit. <i>To be discontinued in 2014-10-01. it will be replaced by code 581.</i>			
	Z09	Catch Certificate Customs code C673 for this document type.			
	Z10	EU Customs Form 302			
	Z11	EU Customs re-export notification Customs code 4D01 for this document type.			
	Z13	Other Customs documents Customs code 9Z13 for this document type.			
		Other customs documents used in the context of de ICS and ECS, not included in 355 or 830 document type.			
	Z14	EU Customs re-export notification by SDS Customs code 4Y01 for this document type.			
	Z15	Diplomatic Document Customs code 9D04 for this document type.			
	Z16	Oral Customs Declaration Customs code 9D07 for this document type.			
	Z99				
		<i>Only provided for backward compatibility. Segment will be ignored.</i>			
	1131	Code list qualifier	C	an..3	X
	3055	Code list responsible agency, coded	C	an..3	X
	1000	Document/message name	C	an..35	X
C503		DOCUMENT/MESSAGE DETAILS	C		R
		Identification of document/message by number, status, source and/or language.			
	1004	Document/message number	C	an..35	R
		Reference number assigned to the document/message by the issuer.			
		When the document is a stamped manifest, then place 'S/N' since no identification is needed.			
	1373	Document/message status, coded	C	an..3	X
	1366	Document/message source	C	an..35	X
	3453	Language, coded	C	an..3	X
3153		COMMUNICATION CHANNEL IDENTIFIER, CODED	C	an..3	X
1220		NUMBER OF COPIES OF DOCUMENT REQUIRED	C	n..2	X
1218		NUMBER OF ORIGINALS OF DOCUMENT REQUIRED	C	n..2	X



**Segment:** **DTM** Date/Time/Period  
**Position:** 2220  
**Group:** SG19-SG41-SG48-SG49  
**Level:** 5  
**Usage:** Conditional (Optional)  
**Max Use:** 1  
**Purpose:** A segment to specify the date/time related to the required document.

**Dependency Notes:****Semantic Notes:****Comments:****Notes:**

The complete meaning of this date depends of the type of document in the previous DOC segment, stated in DOC:C002:1001 data element.

Not to send in case DOC:C002:1001 is 'Z07' (stamped manifest).

Example: Date of issue of the document "2003/10/08"

DTM+182:20031008:102'

**Data Element Summary**

<u>Data Element</u>	<u>Component Element</u>	<u>Name</u>	<u>Base Attributes</u>	<u>User Attributes</u>
<b>C507</b>		<b>DATE/TIME/PERIOD</b>	<b>M</b>	<b>M</b>
		Date and/or time, or period relevant to the specified date/time/period type.		
	<b>2005</b>	<b>Date/time/period qualifier</b>	<b>M an..3</b>	<b>M</b>
		Code giving specific meaning to a date, time or period.		
		182 Issue date		
		Date when a document/message has been or will be issued.		
	<b>2380</b>	<b>Date/time/period</b>	<b>C an..35</b>	<b>R</b>
		The value of a date, a date and time, a time or of a period in a specified representation.		
		According with UN/ECE Recommendation N°7.		
	<b>2379</b>	<b>Date/time/period format qualifier</b>	<b>C an..3</b>	<b>R</b>
		Specification of the representation of a date, a date and time or of a period.		
		102 CCYYMMDD		
		Calendar date: C = Century ; Y = Year ; M = Month ; D = Day.		
		602 CCYY		
		Calendar year including century: C = Century; Y = Year.		
		Only to use when the document was the one under which the agent acquired the authorized expeditor status (SG49:DOC:1001='Z02').		

**Group:** **SGP** Segment Group 52: Split Goods Placement  
**Position:** 2280  
**Group:** Segment Group 41 (Goods Item Details) Conditional (Dependent)  
**Level:** 3  
**Usage:** Conditional (Dependent)  
**Max Use:** 999  
**Purpose:** A group of segments to specify the distribution of a goods item among the transport equipment.

**Notes:** This group depends of the existence of goods loaded into a transport equipment.

This segment group identifies the transport equipment in which the goods are loaded. Details on transport equipment are displayed in the segment group 60. Example: a shipper sends 45 ton of product XPTO distributed as follows: 20 ton in equipment A and 25 to in equipment B.

Note that each transport equipment referred by each occurrence of this group must be described by one occurrence of group 60. For the Port of Leixões and the Port of Sines they must be declared as full in group 60.

When displaying the number of volumes it is necessary to have in mind that the total number of volumes must equal the sum of the loaded volumes on each equipment.

Using this group is based on the knowledge of what goods are in which equipment. Therefore it depends on the knowledge of such information. Thus when using group 52, each equipment referenced will also be identified and described in segment group 60.

For bulk cargo, they are treated as a whole, so they will not be split. This group would not be needed.

In the case of empty transport equipment, this group is used just to relate a particular equipment with information required that appears only in group 41 (example: Warehouse Depositor, Nature of Cargo). This last issue does not apply to the Port of Leixões and the Port of Sines.

#### Segment Summary

	<b>Pos.</b>	<b>Seg.</b>		<b>Req.</b>	<b>Max.</b>	<b>Group:</b>
	<b>No.</b>	<b>ID</b>	<b>Name</b>	<b>Des.</b>	<b>Use</b>	<b>Repeat</b>
M	2290	SGP	Split Goods Placement	M	1	
	2310		Segment Group 53: Measurements	C		1

**Segment:** **SGP** Split Goods Placement  
**Position:** 2290 (Trigger Segment)  
**Group:** SG19-SG41-SG52  
**Level:** 3  
**Usage:** Mandatory  
**Max Use:** 1  
**Purpose:** A segment to identify the equipment in which goods are transported.  
**Dependency Notes:**  
**Semantic Notes:**  
**Comments:**  
**Notes:**

Example: Container CGTU 200311/5 carries 10 volumes of the goods.

SGP+CGTU2003115+10'

Data Element Summary				
<u>Data Element</u>	<u>Component Element</u>	<u>Name</u>	<u>Base Attributes</u>	<u>User Attributes</u>
<b>C237</b>		<b>EQUIPMENT IDENTIFICATION</b>	<b>M</b>	<b>M</b>
		Marks (letters and/or numbers) identifying equipment used for transport such as a container.		
	<b>8260</b>	<b>Equipment identification number</b>	<b>C an..17</b>	<b>R</b>
		Marks (letters and/or numbers) which identify equipment e.g. unit load device.		
	<b>1131</b>	<b>Code list qualifier</b>	<b>C an..3</b>	<b>X</b>
	<b>3055</b>	<b>Code list responsible agency, coded</b>	<b>C an..3</b>	<b>X</b>
	<b>3207</b>	<b>Country, coded</b>	<b>C an..3</b>	<b>X</b>
<b>7224</b>		<b>NUMBER OF PACKAGES</b>	<b>C n..8</b>	<b>O</b>
		Number of individual parts of a shipment either unpacked, or packed in such a way that they cannot be divided without first undoing the packing.		

**Group:** **MEA** Segment Group 53: Measurements  
**Position:** 2310  
**Group:** Segment Group 52 (Split Goods Placement) Conditional (Dependent)  
**Level:** 4  
**Usage:** Conditional (Dependent)  
**Max Use:** 1  
**Purpose:** A group of segments to identify measurements.  
**Notes:** This group in this part of the structure is to provide measurement only of the goods actually loaded in the equipment referenced in the SGP segment.

This group in this part of the structure is to provide measurement only of the goods actually loaded in the equipment referenced in the SGP segment.

In the case of empty transport equipment this information does not apply. So the group does not occur.

An exception to this rule was set by the Port of Lisbon. For the Port of Lisbon only, in the case of empty transport equipment, information about the tare of the equipment has to be provided.

## Segment Summary

	<b>Pos.</b>	<b>Seg.</b>		<b>Req.</b>	<b>Max.</b>	<b>Group:</b>
	<b>No.</b>	<b>ID</b>	<b>Name</b>	<b>Des.</b>	<b>Use</b>	<b>Repeat</b>
M	2320	MEA	Measurements	M	1	
O	2330	EQN	Number of Units	C	1	

**Segment:** **MEA** **Measurements**  
**Position:** 2320 (Trigger Segment)  
**Group:** SG19-SG41-SG52-SG53  
**Level:** 4  
**Usage:** Mandatory  
**Max Use:** 1  
**Purpose:** A segment to specify measurements of that portion of the goods item in the equipment.

**Dependency Notes:****Semantic Notes:****Comments:****Notes:**

For physical measures (weight), the value in element 6066 shall be rounded to two decimal positions. Decimal values equal or above 0,005, shall be rounded to 0,01. Decimal values lower than 0,005 shall be rounded to 0,00. The decimal point shall not be sent. The two rightmost digits will be considered as the decimal position. Example, a weight of 1366,357 kilogram shall be reported as 136636 and will be interpreted as 1366,36 by the receiver.

Example: Gross weight 258,63 Kg.

MEA+AAI+AAD+KGM:25863'

Data Element Summary				
<u>Data Element</u>	<u>Component Element</u>	<u>Name</u>	<u>Base Attributes</u>	<u>User Attributes</u>
6311		<b>MEASUREMENT PURPOSE QUALIFIER</b>	<b>M an..3</b>	<b>M</b>
		Specification of the purpose of the measurement.		
	AAE	Measurement		
		[6314] Value of the measured unit.		
	AAI	Item weight		
C502		Weight at line item level.		
		<i>Only provided for backward compatibility.</i>		
	WT	Weights		
		For the Port of Lisbon only.		
6313		<b>MEASUREMENT DETAILS</b>	<b>C</b>	<b>R</b>
		Identification of measurement type.		
		<b>Property measured, coded</b>	<b>C an..3</b>	<b>R</b>
		Specification of the property measured.		
	AAD	Total gross weight		
C174		[6292] Weight (mass) of goods including packing but excluding the carrier's equipment.		
	T	Tare weight		
		Weight excluding goods and loose accessories.		
		For the Port of Lisbon only.		
6321		<b>Measurement significance, coded</b>	<b>C an..3</b>	<b>X</b>
	6155	<b>Measurement attribute identification</b>	<b>C an..17</b>	<b>X</b>
	6154	<b>Measurement attribute</b>	<b>C an..70</b>	<b>X</b>
6411		<b>VALUE/RANGE</b>	<b>C</b>	<b>R</b>
		Measurement value and relevant minimum and maximum tolerances in that order.		
		<b>Measure unit qualifier</b>	<b>M an..3</b>	<b>M</b>
		Indication of the unit of measurement in which weight (mass), capacity, length, area, volume or other quantity is expressed.		
		UN/ECE Recommendation 20 - Annex II		
6314		KGM kilogram		
		<b>Measurement value</b>	<b>C an..18</b>	<b>R</b>
		Value of the measured unit.		
		Include 2 decimal positions.		
6162		<b>Range minimum</b>	<b>C n..18</b>	<b>X</b>

Common Platform - Manifest Message Format - Version 1.5e

	<b>6152</b>	<b>Range maximum</b>	<b>C</b>	<b>n..18</b>	<b>X</b>
	<b>6432</b>	<b>Significant digits</b>	<b>C</b>	<b>n..2</b>	<b>X</b>
<b>7383</b>		<b>SURFACE/LAYER INDICATOR, CODED</b>	<b>C</b>	<b>an..3</b>	<b>X</b>

**Segment:** **EQN** **Number of Units**  
**Position:** 2330  
**Group:** SG19-SG41-SG52-SG53  
**Level:** 5  
**Usage:** Conditional (Optional)  
**Max Use:** 1  
**Purpose:** A segment to specify the number of equipment units to each of which the given measurement applies.

**Dependency Notes:****Semantic Notes:****Comments:**

**Notes:** *Only provided for backward compatibility. It will be ignored.*

**Data Element Summary**

<u>Data Element</u>	<u>Component Element</u>	<u>Name</u>	<u>Base Attributes</u>	<u>User Attributes</u>
<b>C523</b>		<b>NUMBER OF UNIT DETAILS</b> Identification of number of units and its purpose.	<b>M</b>	<b>M</b>
	<b>6350</b>	<b>Number of units</b> Number of units of a certain type.	<b>C n..15</b>	<b>R</b>
	<b>6353</b>	<b>Number of units qualifier</b>	<b>C an..3</b>	<b>X</b>

**Group:** **EQD** Segment Group 60: Equipment Details  
**Position:** 2570  
**Group:** Segment Group 19 (Consignment Information) Conditional (Dependent)  
**Level:** 2  
**Usage:** Conditional (Dependent)  
**Max Use:** 999  
**Purpose:** A group of segments to specify equipment in which goods are transported.  
**Notes:** The equipment is identified and its tare must be provided.

When the equipment is full then information about the seal must be provided.

Also, if the equipment is full then its identification must be present in one occurrence of group 52 (SGP) at least. Of course this reference in group 52 is under an occurrence of group 41 (GID) if all/part of the goods described by group 41 are in the equipment. This applies only to the Port of Leixões and to the Port of Sines.

Both references in groups 52 and 60 must be present in the same group 19 (CNI). See notes in group 52.

In element 8155 the container ISO type according to ISO 6346 (2nd and 3rd editions) is sent. In this standard the first number of this codification provides the container length. If unknown then use the code defined for element 8155 by UN/EDIFACT.

#### Segment Summary

	<b>Pos. No.</b>	<b>Seg. ID</b>	<b>Name</b>	<b>Req. Des.</b>	<b>Max. Use</b>	<b>Group: Repeat</b>
M	2580	EQD	Equipment Details	M	1	
R	2610	MEA	Measurements	C	1	
D	2630	SEL	Seal Number	C	6	



<b>Segment:</b>	<b>EQD</b> Equipment Details
<b>Position:</b>	2580 (Trigger Segment)
<b>Group:</b>	SG19-SG60
<b>Level:</b>	2
<b>Usage:</b>	Mandatory
<b>Max Use:</b>	1
<b>Purpose:</b>	A segment to specify equipment, and equipment size and type used in the transport.
<b>Dependency Notes:</b>	
<b>Semantic Notes:</b>	
<b>Comments:</b>	
<b>Notes:</b>	<p>This segment is to identify the transport equipment, its size/type and if it is full or empty.</p> <p>If it is full, its presence in one occurrence of group 52 will be checked, given an error if absent.</p> <p>If it is empty, its presence in one occurrence of group 52 will be checked, given an error if present.</p> <p>If it is other than an ISO container then DE:8155 shall have the proper value from the standard code list associated with this element (displayed in the element).</p> <p>If it is an ISO container then DE: 8155 shall have the ISO type according standard ISO 6346. If this code is unknown then place the proper value from standard code list associated with this element (displayed in the element).</p> <p>Example: Container CGTU 200311/5, 20 ft, full (LCL)</p> <p>EQD+CN+CGTU2003115+21:102:6+++7'</p> <p>Example: Container GSTU 000029/0, 40 ft General purpose (ISO 40GP), empty</p> <p>EQD+CN+GSTU0000290+40GP:102:5+++4'</p> <p>Example: Trailer Z-53791, full</p> <p>EQD+TE+Z53791++++5'</p>

Data Element Summary				
<u>Data Element</u>	<u>Component Element</u>	<u>Name</u>	<u>Base Attributes</u>	<u>User Attributes</u>
8053		<b>EQUIPMENT QUALIFIER</b> Code identifying type of equipment. UN/EDIFACT code list for Data Element 8053.	<b>M an..3</b>	<b>M</b>
C237		<b>EQUIPMENT IDENTIFICATION</b> Marks (letters and/or numbers) identifying equipment used for transport such as a container.	<b>C</b>	<b>R</b>
	8260	<b>Equipment identification number</b> Marks (letters and/or numbers) which identify equipment e.g. unit load device.	<b>C an..17</b>	<b>R</b>
	1131	<b>Code list qualifier</b>	<b>C an..3</b>	<b>X</b>
	3055	<b>Code list responsible agency, coded</b>	<b>C an..3</b>	<b>X</b>
	3207	<b>Country, coded</b>	<b>C an..3</b>	<b>X</b>
C224		<b>EQUIPMENT SIZE AND TYPE</b> Code and/or name identifying size and type of equipment used in transport. Code preferred. This composite is used only when the equipment is a container (EQD:8053 = CN).	<b>C</b>	<b>D</b>
	8155	<b>Equipment size and type identification</b> Coded description of the size and type of equipment e.g. unit load device. In case of ISO container equipment (DE:8053=CN) and if its ISO type is known then send the Size/Type information according to ISO 6346 (2nd or 3rd edition). Otherwise use UN/EDIFACT code list for Data Element 8155.	<b>C an..10</b>	<b>R</b>
	1131	<b>Code list qualifier</b> Identification of a code list.	<b>C an..3</b>	<b>R</b>
		102 Size and type		

<b>3055</b>	<b>Code list responsible agency, coded</b>	<b>C</b>	<b>an..3</b>	<b>R</b>
	Code identifying the agency responsible for a code list.			
	5	ISO (International Organization for Standardization)		
		Use this code when DE:8155 contains the ISO 6346 code.		
	6	UNECE (United Nations - Economic Commission for Europe)		
		Use this code when DE:8155 contains a code from the list associated with this Data Element.		
<b>8154</b>	<b>Equipment size and type</b>	<b>C</b>	<b>an..35</b>	<b>X</b>
<b>8077</b>	<b>EQUIPMENT SUPPLIER, CODED</b>	<b>C</b>	<b>an..3</b>	<b>X</b>
<b>8249</b>	<b>EQUIPMENT STATUS, CODED</b>	<b>C</b>	<b>an..3</b>	<b>X</b>
<b>8169</b>	<b>FULL/EMPTY INDICATOR, CODED</b>	<b>C</b>	<b>an..3</b>	<b>R</b>
	To indicate the extent to which the equipment is full or empty.			
	4	Empty		
		For the Port of Leixões and Port of Sines, if the equipment is empty then its identification must be absent from any occurrence of group 52.		
	5	Full		
		For the Port of Leixões and Port of Sines, if the equipment is full then its identification must be present in one occurrence of group 52.		
	7	Full, mixed consignment		
		Indicates that the equipment is fully loaded, and includes a number LCL (Less Than Container Load) consignments.		
		For the Port of Leixões and Port of Sines, if the equipment is full then its identification must be present in one occurrence of group 52.		
	8	Full, single consignment		
		Indicates that the container is fully loaded with a single FCL (Full Container Load) consignment.		
		For the Port of Leixões and the Port of Sines, if the equipment is full then its identification must be present in one occurrence of group 52.		

**Segment:** **MEA** Measurements  
**Position:** 2610  
**Group:** SG19-SG60  
**Level:** 3  
**Usage:** Conditional (Required)  
**Max Use:** 1  
**Purpose:** A segment to specify measurements, other than dimensions, associated with the equipment, such as weight.

**Dependency Notes:****Semantic Notes:****Comments:****Notes:**

For physical measures (tare is a weight), the value in element 6066 shall be rounded to two decimal positions. Decimal values equal or above 0,005, shall be rounded to 0,01. Decimal values lower than 0,005 shall be rounded to 0,00. The decimal point shall not be sent. The two rightmost digits will be considered as the decimal position. Example, a tare of 2053,353 kilogram shall be reported as 205335 and will be interpreted as 2053,35 by the receiver.

Example: Container with tare 2139 Kg.

MEA+WT+T+KGM:213900'

**Data Element Summary**

<b>Data Element</b>	<b>Component Element</b>	<b>Name</b>	<b>Base Attributes</b>	<b>User Attributes</b>
6311		<b>MEASUREMENT PURPOSE QUALIFIER</b> Specification of the purpose of the measurement. WT                      Weights	<b>M</b> <b>an..3</b>	<b>M</b>
C502		<b>MEASUREMENT DETAILS</b> Identification of measurement type.	<b>C</b>	<b>R</b>
	6313	<b>Property measured, coded</b> Specification of the property measured. T                      Tare weight Weight excluding goods and loose accessories.	<b>C</b> <b>an..3</b>	<b>R</b>
	6321	<b>Measurement significance, coded</b>	<b>C</b> <b>an..3</b>	<b>X</b>
	6155	<b>Measurement attribute identification</b>	<b>C</b> <b>an..17</b>	<b>X</b>
	6154	<b>Measurement attribute</b>	<b>C</b> <b>an..70</b>	<b>X</b>
C174		<b>VALUE/RANGE</b> Measurement value and relevant minimum and maximum tolerances in that order.	<b>C</b>	<b>R</b>
	6411	<b>Measure unit qualifier</b> Indication of the unit of measurement in which weight (mass), capacity, length, area, volume or other quantity is expressed. UN/ECE Recommendation 20 - Annex II KGM                      kilogram	<b>M</b> <b>an..3</b>	<b>M</b>
	6314	<b>Measurement value</b> Value of the measured unit.	<b>C</b> <b>an..18</b>	<b>R</b>
	6162	<b>Range minimum</b>	<b>C</b> <b>n..18</b>	<b>X</b>
	6152	<b>Range maximum</b>	<b>C</b> <b>n..18</b>	<b>X</b>
	6432	<b>Significant digits</b>	<b>C</b> <b>n..2</b>	<b>X</b>
7383		<b>SURFACE/LAYER INDICATOR, CODED</b>	<b>C</b> <b>an..3</b>	<b>X</b>

**Segment:** **SEL** Seal Number  
**Position:** 2630  
**Group:** SG19-SG60  
**Level:** 3  
**Usage:** Conditional (Dependent)  
**Max Use:** 6  
**Purpose:** A segment to identify seal and seal issuer associated with the equipment.  
**Dependency Notes:**  
**Semantic Notes:**  
**Comments:**  
**Notes:**

Segment must be used when the equipment is full.

Example: Carrier seal 6629290

SEL+6629290+CA'

Data Element Summary				
<u>Data Element</u>	<u>Component Element</u>	<u>Name</u>	<u>Base Attributes</u>	<u>User Attributes</u>
9308		SEAL NUMBER	M an..10	M
		The number of a custom seal or another seal affixed to the containers or other transport unit.		
C215		SEAL ISSUER	C	O
		Identification of the issuer of a seal on equipment either by code or by name.		
	9303	Sealing party, coded	C an..3	O
		Identification of the issuer of the seal number.		
		UN/EDIFACT code list for Data Element 9303.		
	1131	Code list qualifier	C an..3	X
	3055	Code list responsible agency, coded	C an..3	X
	9302	Sealing party	C an..35	X
4517		SEAL CONDITION, CODED	C an..3	X

**Segment:** **UNT** Message Trailer  
**Position:** 2810  
**Group:**  
**Level:** 0  
**Usage:** Mandatory  
**Max Use:** 1  
**Purpose:** A service segment ending a message, giving the total number of segments in the message and the control reference number of the message.

**Dependency Notes:**  
**Semantic Notes:**  
**Comments:**  
**Notes:**

Example: 26 sent segments, reference 1357924680  
UNT+26+1357924680'

Data Element Summary				
<u>Data</u> <u>Element</u>	<u>Component</u> <u>Element</u>	<u>Name</u>	<u>Base</u> <u>Attributes</u>	<u>User</u> <u>Attributes</u>
0074		NUMBER OF SEGMENTS IN A MESSAGE Control count of number of segments in a message.	M n..6	M
0062		MESSAGE REFERENCE NUMBER Unique message reference assigned by the sender.	M an..14	M